

Arize Corporation ASL220 Smart Lock User Manual

Manualsum, simplified manuals

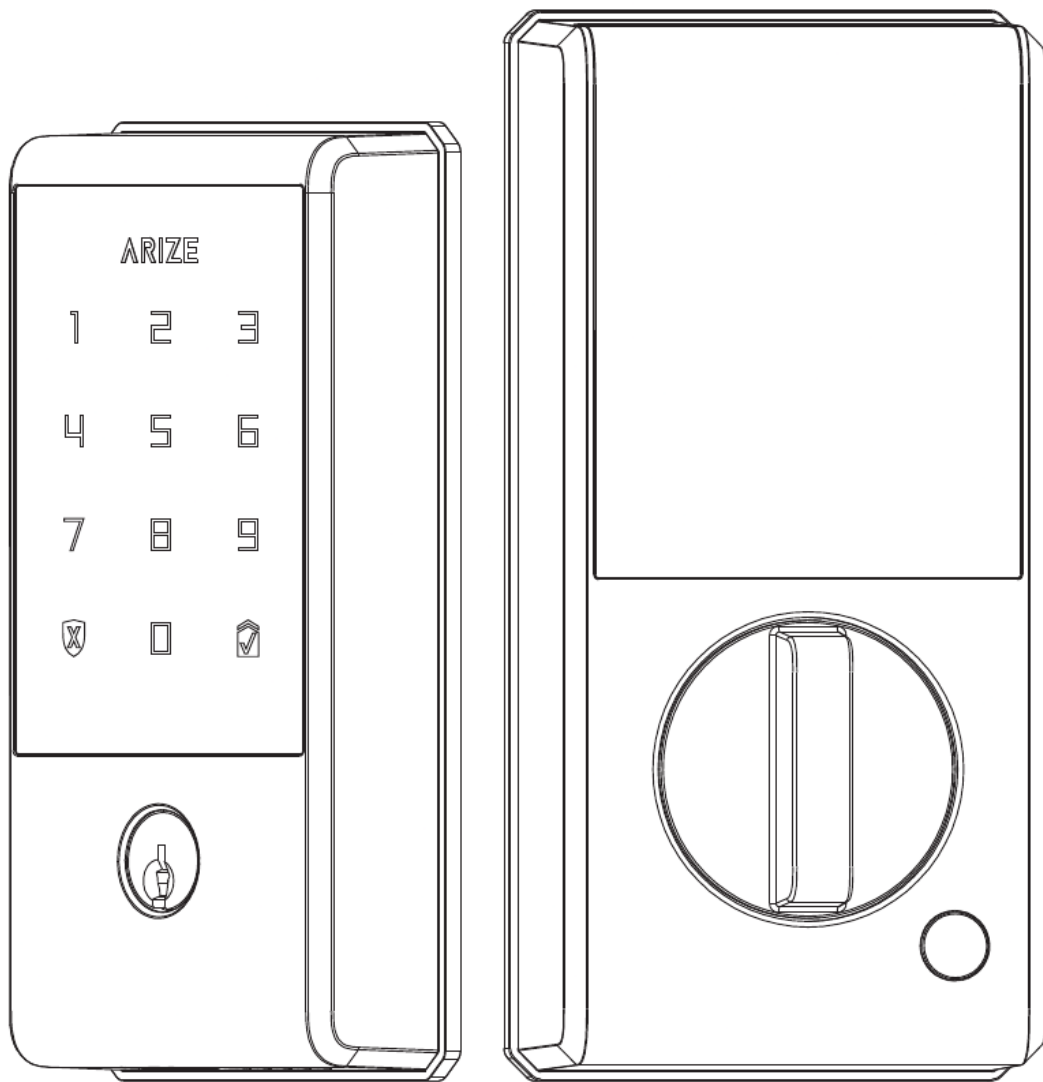
Table of Contents

- [Arize Corporation ASL220 Smart Lock User Manual](#)
 - [AT A GLANCE](#)
 - [Packaging list](#)
 - [INSTALLATION](#)
 - [Usage operation](#)
 - [Set initial password](#)
 - [Use initial password to unlock](#)
 - [Pairing mode](#)
 - [Reset](#)

Arize Corporation ASL220 Smart Lock User Manual

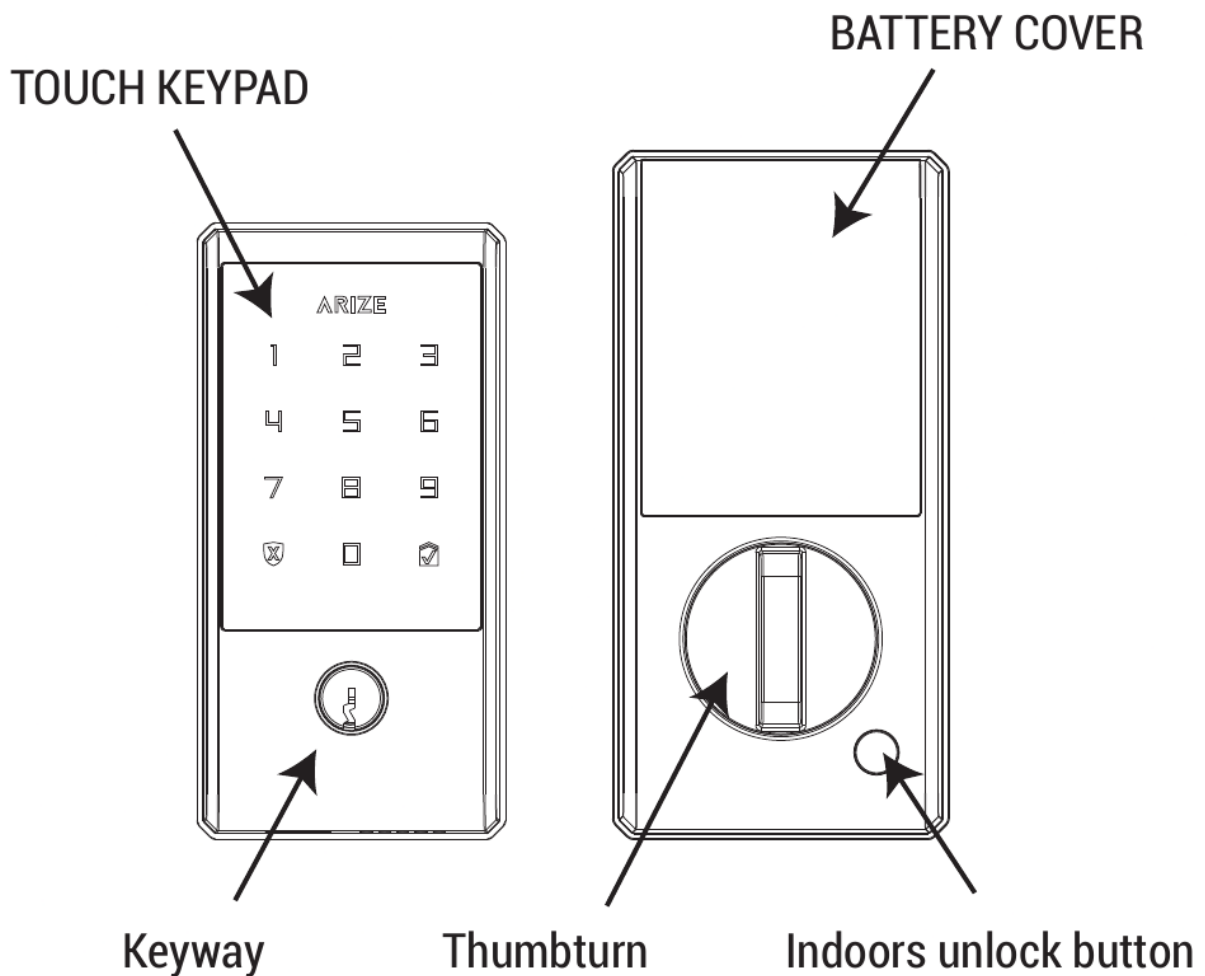
Arize Corporation ASL220 Smart Lock User Manual

[2AWPP-ASL220](#)



ARIZE

AT A GLANCE



Packaging list

NO	Component	Quantity	Remark
1	Exterior Assembly	1	
2	Interior Assembly	1	
3	Deadbolt	1	
4	Accessory pack	1	
5	Batteries	8	AA Battery
6	Holes Diagram	1	
7	Quick Start Guide	1	
8	Keys	2	

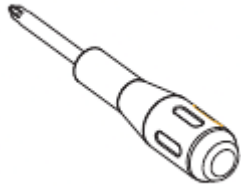
Warning:

Any changes or modifications to this device that are not explicitly approved by the responsible party may result in the user having no authority to operate the device.

[Manualsum](#)

INSTALLATION

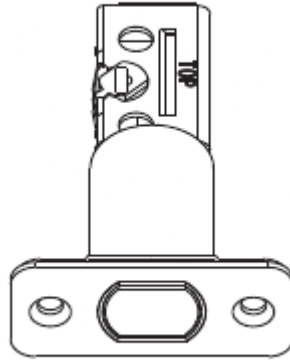
1. Prepare a Phillips screwdriver before installation



Phillips screwdriver



Screws



Deadbolt

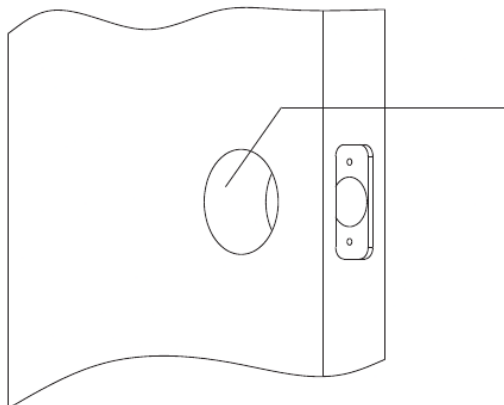


Exterior Assembly



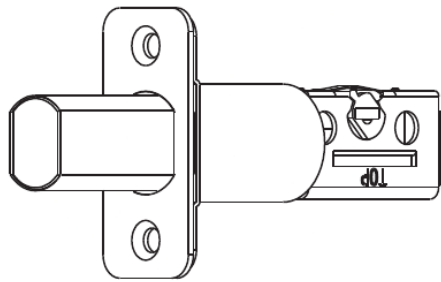
Inter

2. Please confirm whether to adjust the locking tongue based on the distance from the center hole to the door frame.

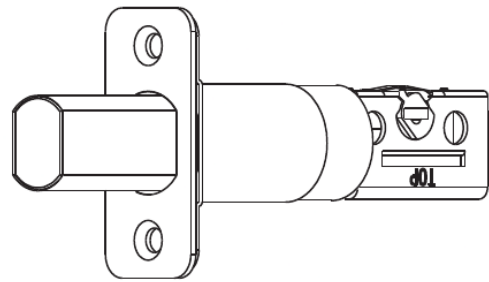


Please adjust the mortise lock based on the distance, common standard is 70mm and 60mm.

Default distance is 60mm, if necessary changed to 70mm, Grasp both ends of the lock body and rotate them 180 degrees. Extend the lock body to a center distance of 70mm, then rotate it in the opposite direction by another 180 degrees to change back to the original center distance

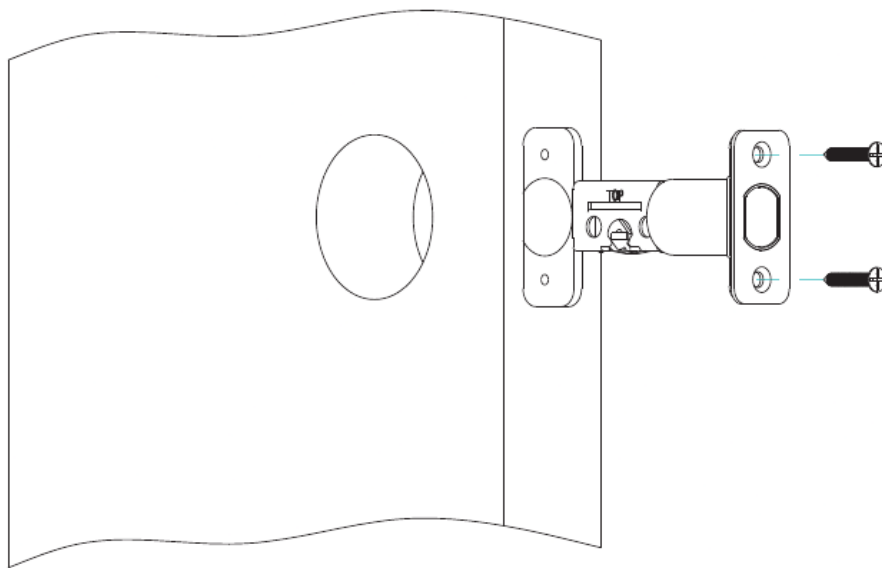


60mm

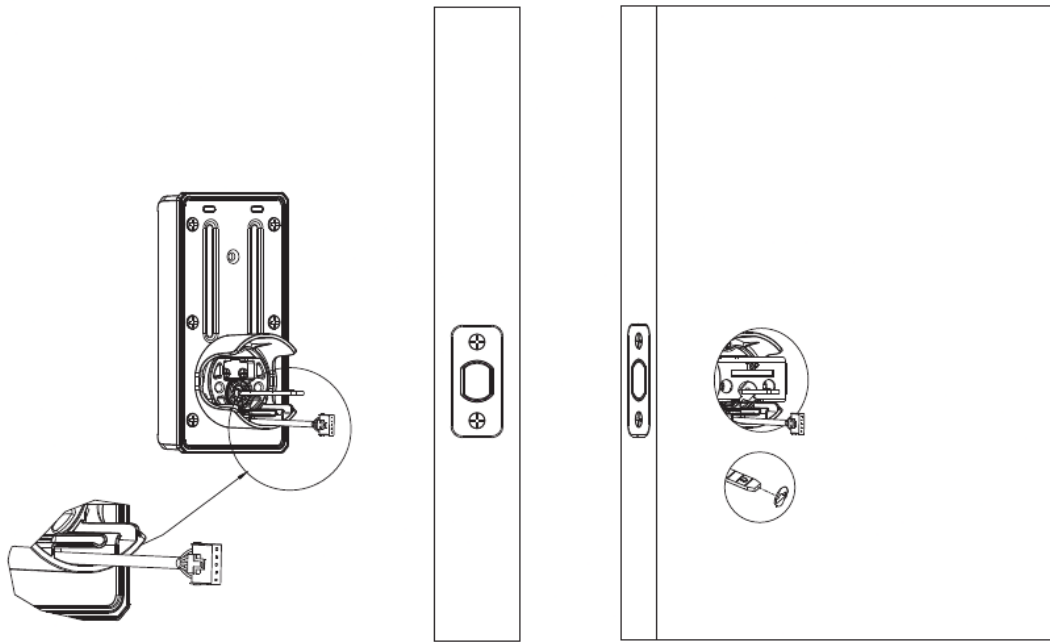


70mm

3. As shown in the figure below, insert the lock body into the door hole and fix it with screws

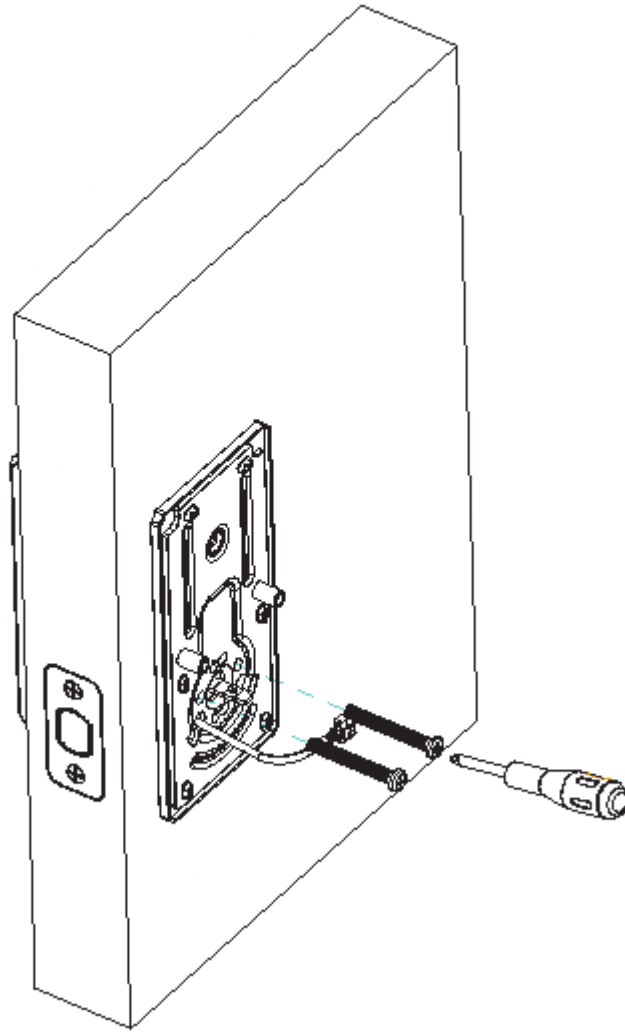


4. Install the exterior assembly according to the diagram, and the lock cylinder and connecting rod of the front panel need to be horizontal



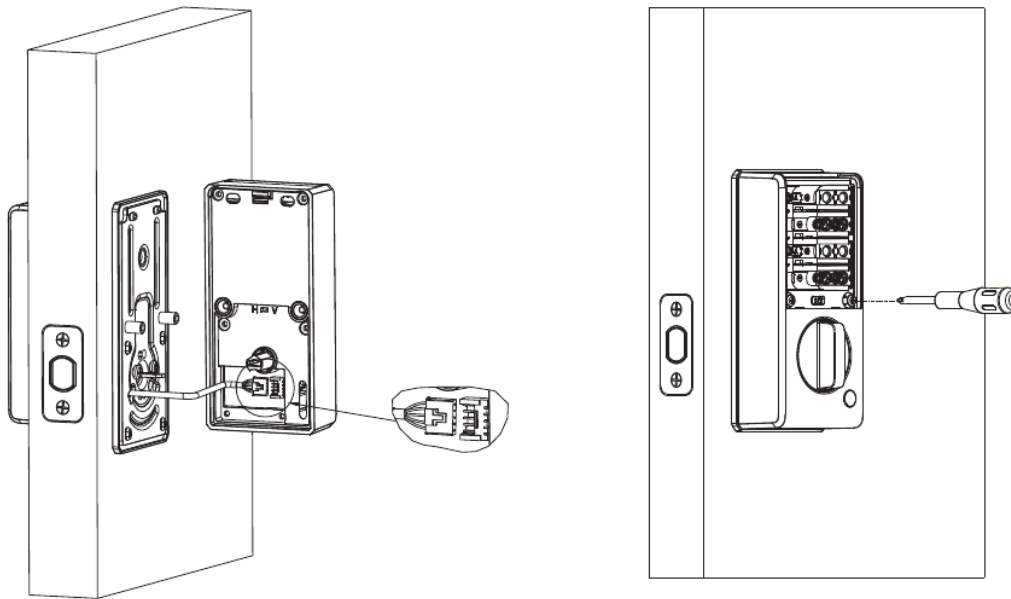
5. Thread the cable through the through-hole on the backplane and fix the exterior assembly with screws through the backplane;

Choose the appropriate length of screws based on the thickness of the door



6. Connect all the wires together, and fix the interior assembly in place;

Attention: Excess wires are hidden in the interior assembly groove ;



Please test with a battery after installation Test: When inserting the battery, please touch the screen to activate it.

If not working, please check:

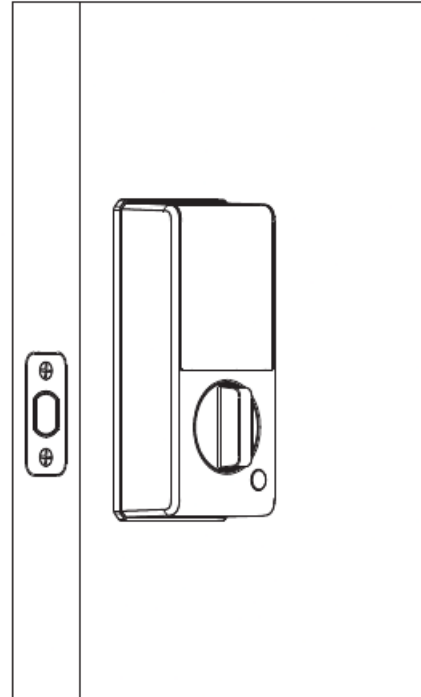
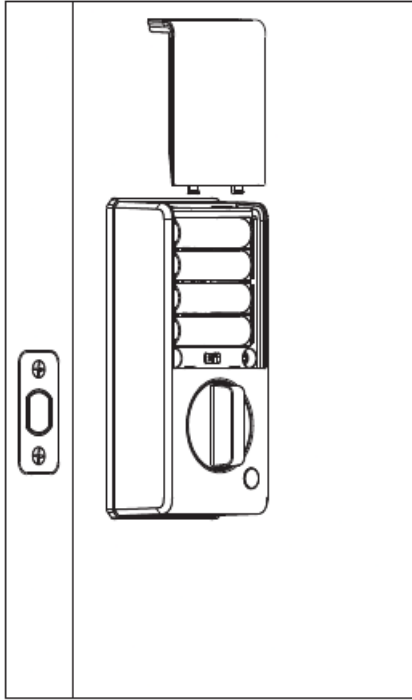
1. Battery status

A: Poor battery B: "+" "-" Installed correctly C: Battery Loose or deviated battery

2. The wire is not properly plugged in

3. The plug is broken

7. Hide the battery pull rod inside the battery compartment and slide the battery cover up to down to fix it



Usage operation

1.First use

- **a)** After correctly installing the lock onto the door, ensure that the lock tongue can extend normally without obstruction, Insert 8pcs AA batteries;
- **b)** When the lock is not connected to the network, enter any 4-8 digit password and press the confirm key “v” and able to unlock;
- **c)** Unlocking status, touch any key and able to lock;

2.Calibrate the direction of the lock

- **a)** Remove battery cover, quick click “set”button twice within 2 seconds, direction of smart lock will be calibrated automatically then voice “calibrate successfully”once succeed

3.Unlock with password

- **a)** Touch any key to activate the lock, input password then press“v” ;
- **b)** During input password, able to restart to input password if press“x”
- **c)** If password is correct, status lighting bar shows green color and implement unlocking;
- **d)** If password is incorrect, status lighting bar shows red color, then change to standby mode;

Set initial password

If the lock has not been bound or has been set with an initial password, you can set the initial password by following the steps below

- 1) Lock with standby mode: Ensure without keypad back lighting, otherwise, please touch "x" twice to standby mode,
- 2) Touch any key to activate the lock
- 3) Input "0, 0", press "v", voice announcement as following, "please input initiated password"
- 4) Input 4-8 digits password
- 5) Click "v" for next step, Please note that if the number of digits entered does not meet the requirements of 4-8 digits or is too simple, the lock will voice a corresponding warning, and the user needs to enter it again
- 6) Re-enter the initialized password, click "v" for confirmation, if password does not match, lock voices "The access code do not match, please re-enter, if password matched, voices "Initial access code setting complete", password initiated succeed, click "x" and able to removed password entered and restart the configuration again
 - Please note that after the initial password is set, the lock can only be unlocked through the thumbturn, key, interior lock button, and initial password verification.
 - If you want to exit during configuration, please tap the "x" at least twice until hearing the voice of "exit initial code setting"

Use initial password to unlock

After the initial password is successfully set, the lock can be unlocked using the initial password by following the steps below :

1. Touch keypad to activate lock, press "x" and able to remove all inputs and restart operation
2. Input configured password, lock support to input virtual password, support maximum 20 digits includes configured password
3. After entering the password, tap the "v" button to confirm. If you want to re-enter the password due to input errors, please tap the "x" once and able to re-enter the password
4. If the password being verified, unlocking automatically, and the light bar shows green color with a prompt voice then lights being turned off
5. If the password entered is incorrect, the lock with a warning tone, and the red light bar will flash for a period of time then all backlights turn off

Pairing mode

Press the “set” button of the interior lock for 1-2 seconds in standby mode, and release it when the lock body broadcasts the voice “Please turn on the app pairing lock”, and the lock body will enter the network distribution mode. At this time, the light bar on the front panel of the door lock will light up blue and cycle on and off. The entire network distribution mode will last for about 3 minutes, during which the front lock panel will not respond to other operations.

During the network configuration process, if the binding is successful, the lock will broadcast “Device has been paired” and the light bar will turn off. The door lock returns to normal state, and the initial password (if any) becomes invalid.

During the network configuration process, if any hub fails to be pairing and the maximum duration of the network distribution mode is exceeded, the lock will broadcast “Pairing Failed” and all lights will turn off. The initial password (if any) will still work normally

Reset

Follow the steps below to reset the lock. After the reset, the lock’s initial password, pairing status and other information will be cleared, and the settings will be restored to initial state.

Press and hold the set button of the interior lock for 10 seconds. During the long press, a beep will sound every 2 seconds or so. When the long press reaches 10 seconds, the lock will announce

1. “please input reset password” prompt voice. After entering the reset password, press the confirm button, and the lock enters the reset state.
2. prompt voice “reset in progress”; lock reset successfully, voice prompt
3. “reset successfully”.