

earfün Air Life True Wireless Earbuds User Manual

Manualsum, simplified manuals

Table of Contents

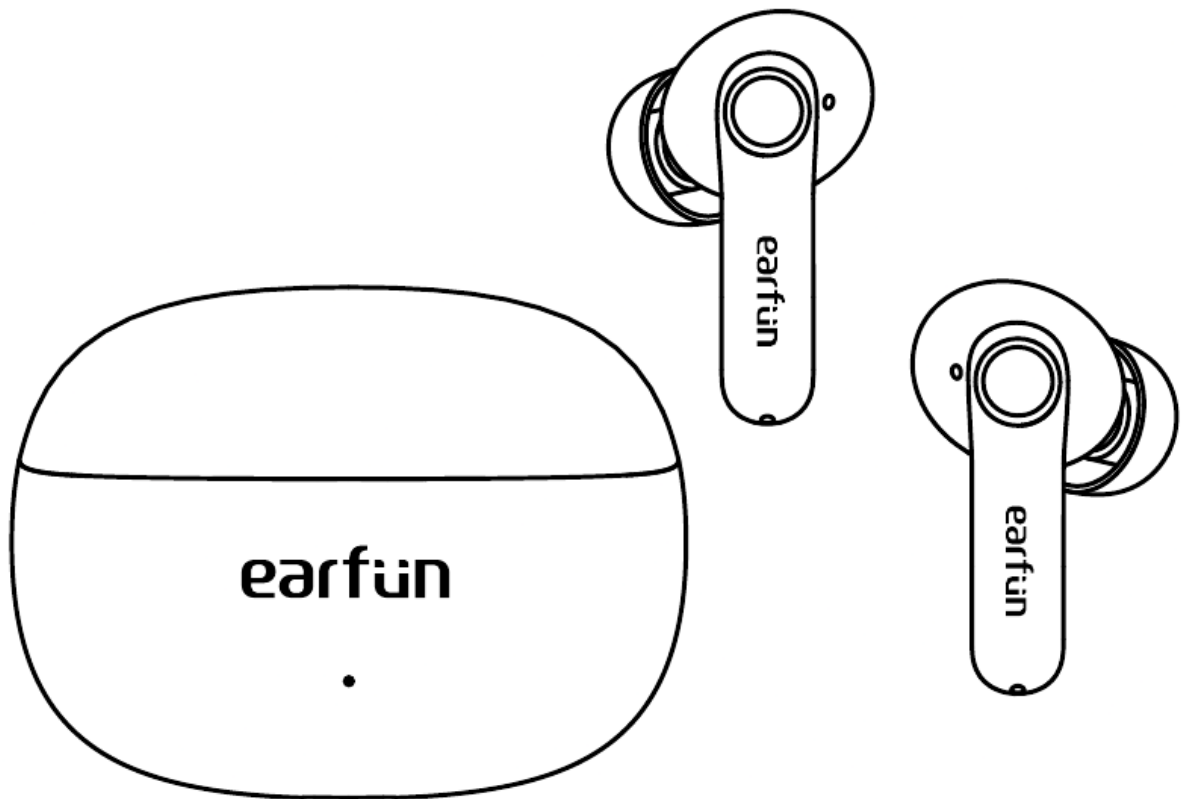
- [earfün Air Life True Wireless Earbuds User Manual](#)
 - [EarFun Audio App](#)
 - [How to Fit](#)
 - [Pairing Your Earbuds](#)
 - [First-time Pairing with Device](#)
 - [Connect to a New Device](#)
 - [Option A](#)
 - [Option B](#)
 - [Reset and Reconnecting](#)
 - [Touch Controls](#)
 - [Battery level](#)
 - [Specifications](#)
 - [Troubleshooting](#)
 - [Customer Service](#)
 - [CAUTION](#)

earfün Air Life True Wireless Earbuds User Manual

earfün Air Life True Wireless Earbuds User Manual

Earfun Technology (HK) Limited True Wireless Earbuds User Manual

[2AVIT-TW205](#)



EarFun Audio App

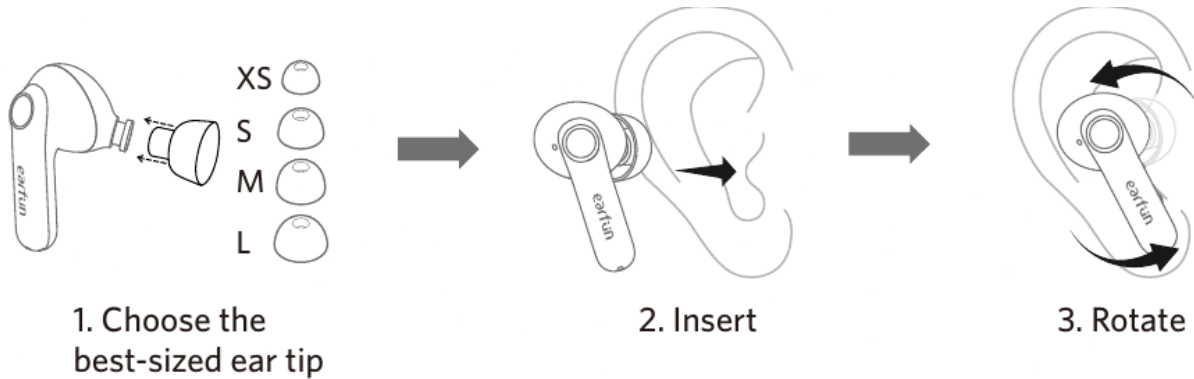
Download the EarFun Audio app for an enhanced experience.

- No Forced Registration. Easy to Use.
- Multi-Band Equalizer, Multipoint Devices Management.
- Customizable Touch Controls, Game Mode.
- Firmware Update, Find Headphones, and More.



Please update your earbuds firmware to the latest version via the EarFun Audio App for the best user experience. If earbuds can't connect to the app, reinstall or update the app in the app store.

How to Fit

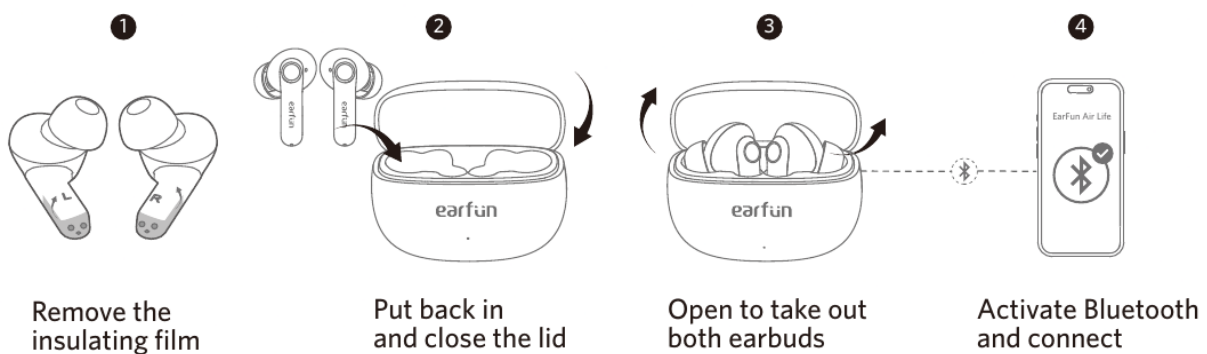


Note:

1. Please choose the suitable ear tip for the best sound and secure fit.
2. Select the left or right earbud and insert to the corresponding ear.
3. Rotate the earbud back and forth for the ear tip to create a comfortable seal.

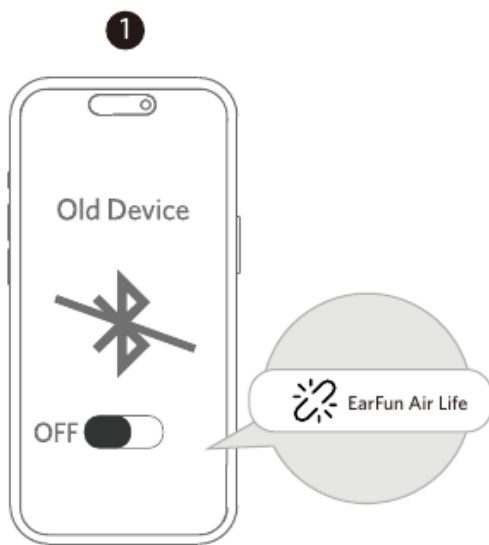
Pairing Your Earbuds

First-time Pairing with Device



Connect to a New Device

Option A

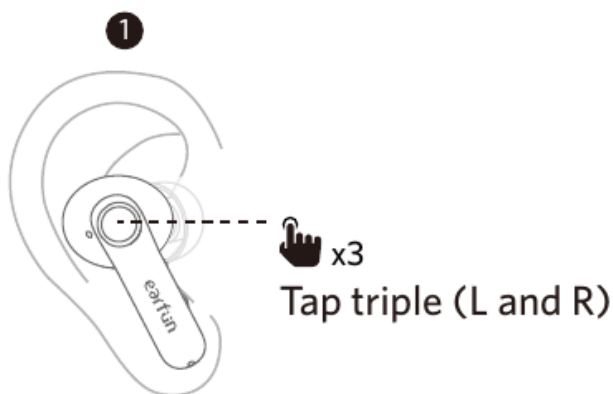


Unpair from the old device



Search on the new device and connect

Option B

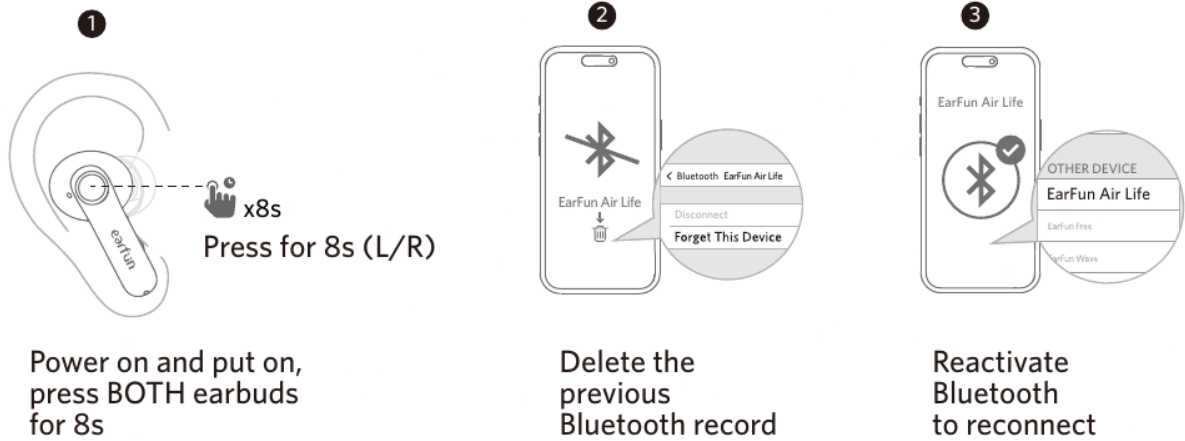


Power on and put on, triple tap on BOTH earbuds to pair



Search on the new device and connect

Reset and Reconnecting



Power on and put on, press BOTH earbuds for 8s

Delete the previous Bluetooth record

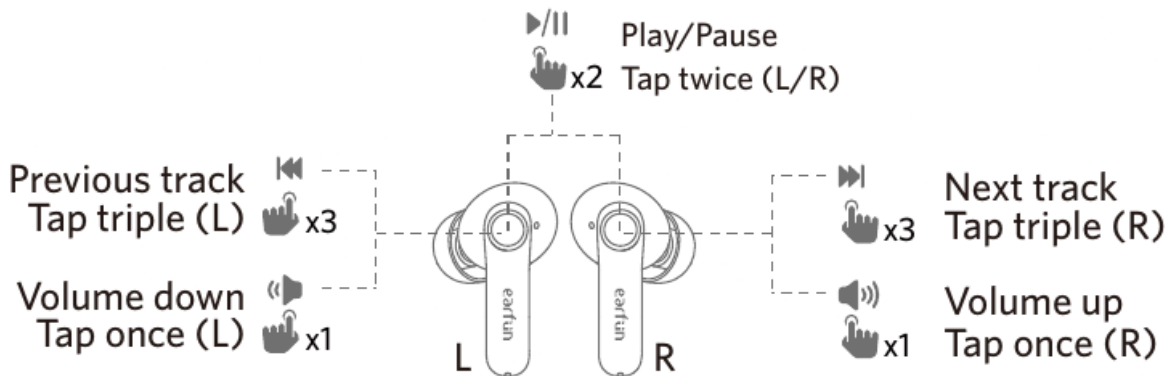
Reactivate Bluetooth to reconnect

*Until hearing the prompt tone "pairing"

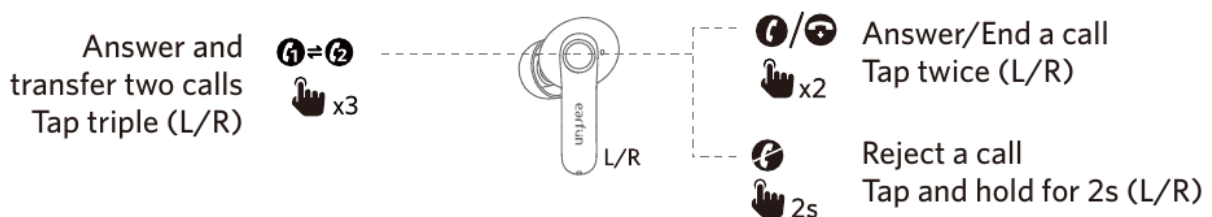
Touch Controls



Playing music



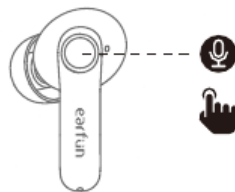
Hands free conversation






Activate the voice assistant

Voice assistant



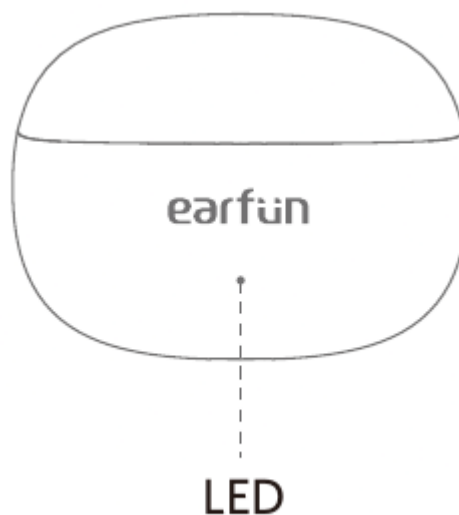
 2s Tap and hold for 2s (L/R)



Game Mode: Please enable in EarFun Audio app

Battery level

Green	70%-100%
White	30%-70%
Orange	5%-30%
No LED Indicating	<5% Please charge
LEDs flashes lowly	Charging
Green	Charging complete



Specifications

Bluetooth version	V5.4
Bluetooth frequency	2.402GHz-2.480GHz
Bluetooth profile	A2DP, AVRCP, HFP, HSP
Bluetooth transmitted power	<7dBm (for EU)
Battery capacity	60mAh x 2(earbuds); 380mAh(charging case) 1.5 hours(for earbuds)
Charging time	2 hours(for charging case via USB-C)

[Manualsum](#)

Playtime(varies by volume level and audio content)	Up to 11 hours, Totally 35 hours with the charging case
Dimensions	61.8mm x 25.7mm x 46.9mm
Weight	38g

Troubleshooting

- **Q: The earbuds are turning on, but fail to connect to my device?**

A: To connect your earbuds to your device, please remove the insulating films on both earbuds and check that Bluetooth is enabled. If the earbuds still don't connect, try resetting them or contact us for assistance.

- **Q: What to do if one earbud is silent or has low volume?**

A: If the earbud's LED is lit, carefully clean the dirt from the speak mesh using a toothpick or cotton swab dipped in alcohol. Try to reset the two earbuds and reconnect. If the issue persists, please contact us for assistance.

- **Q: What to do if the earbuds are uncomfortable to wear?**

A: Select the appropriate size of eartips, then correctly wear the earbuds.

- **Q: What to do if the other person cannot hear clearly during a call?**

A: Please adjust the position of the earbuds to ensure that the voice microphone is pointing towards the direction of the speaker's voice. Ensure the Bluetooth device uses the earbud's microphone for calls.

- **Q: What to do if the earbuds fail to connect to the app?**

A: Ensure Bluetooth connection and Location permissions are enabled for the app. These permissions do not involve any privacy information. You can also download the latest version of the app or uninstall and reinstall it if needed.

- **Q: What to do if the audio quality does not meet your expectations?**

A: We suggest personalizing your audio settings according to your preferences in the EarFun Audio app's EQ settings.

- **Q: Why is the connection not stable and cuts out intermittently?**

A: Please check for any objects obstructing the earbuds and the Bluetooth device, and avoid any potential radio or WiFi interference. While the earbuds

have a maximum range of 49 feet (15m) without obstacles, the actual range may vary depending on usage the environment.

• **Q: Is the charging case waterproof?**

A: No, the earbuds are sweat and waterproof, but the charging case is not.

Customer Service

For FAQS and more information:

Please send an email to: service@myearfun.com

www.myearfun.com

CAUTION

Risk of explosion if the battery is replaced by an incorrect type

Disposal of a battery into fire or a hot even, or mechanically crushing or cutting of a battery, that can result in an explosion;

Leaving a battery in an extremely high temperature surrounding environment that can result in an explosion or the leakage of flammable liquid or gas;

A battery subjected to extremely low air pressure that may result in an explosion or the leakage of flammable liquid or gas.



To prevent possible hearing damage, do not listen at high volume levels for long periods.



® XXX-XXXXXX