

Gemini Outdoor Bluetooth LED Rock Speakers User Manual 2AWFXSPR500BC

Manualsum, simplified manuals

Table of Contents

- [Gemini Outdoor Bluetooth LED Rock Speakers User Manual](#)
 - [What's Included](#)
 - [PRECAUTIONS](#)
 - [Fire and electric shock hazard](#)
 - [Battery charging](#)
 - [Disclaimer:](#)
 - [Solar Panel Maintenance:](#)
 - [VOICE PROMPTS:](#)
 - [Back panel](#)
 - [Power ON/OFF](#)
 - [Pair \(Multi-Link\)](#)
 - [USB-C charging](#)
 - [Charging LED](#)
 - [Bluetooth /Multi-Link LED](#)
 - [Bluetooth LED](#)
 - [Multi-Link LED](#)
 - [MULTI-LINK CONNECTION](#)
 - [SPECIFICATIONS For GHRK-500LTMS](#)
 - [SPECIFICATIONS For GHRK-500LTMS-PR](#)

Gemini Outdoor Bluetooth LED Rock Speakers User Manual

(2AWFXSPR500BC)



What's Included

If a single speaker is purchased:

- 1 x GHRK-500LTMS Speaker
- 1 x Charging USB Cables
- User Manual

If purchased as a boxed pair:

- 2 x GHRK-500LTMS Speaker
- 2 x Charging USB Cables
- User Manual

PRECAUTIONS

This set has been designed and manufactured to assure personal safety. Improper use can result in electric shock or fire hazard. The safeguards incorporated in this unit will protect you if you observe the following procedures for installation, use, and servicing. This unit is fully transistorized and does not contain any parts that can be repaired by the user.

Fire and electric shock hazard

1. Do not place any open flame sources, such as lighted candles, on or near the apparatus.
2. Do not attempt to service the apparatus yourself.
3. Opening or removing covers may expose you to dangerous voltages or other hazards and will void the manufacturer's warranty.
4. To prevent risk of fire or electric shock, avoid overloading wall outlets, extension cords, or integral convenience receptacles.
5. Lightning storms Unplug this apparatus during lightning storms.
6. Object and liquid entry: Never insert objects of any kind through the openings of this apparatus, as it may touch dangerous voltage points

or short-circuit parts that could result in a fire or electric shock. Care should be taken so that objects do not fall and liquids are not spilled into the apparatus through openings in the enclosure

Battery charging

1. To reduce the risk of fire or electric shock, do not expose the apparatus to rain or moisture while charging.
2. The apparatus should not be exposed to dripping or splashing; and objects filled with liquids, such as vases, should not be placed on or near it while being charged.
3. Do not continue charging the battery if it does not reach full charge within the specified charging time. Overcharging may cause the battery to become hot, rupture, or ignite.
4. Do not attempt to charge the battery in temperatures outside the range of 32°-104°F(0°-40°C).
5. If you see any heat deformation or leakage, properly dispose of the battery.
6. If the battery begins to leak, do not allow the liquid to come into contact with your skin or eyes. If contact has been made, wash the affected area with plenty of water and seek medical attention immediately.

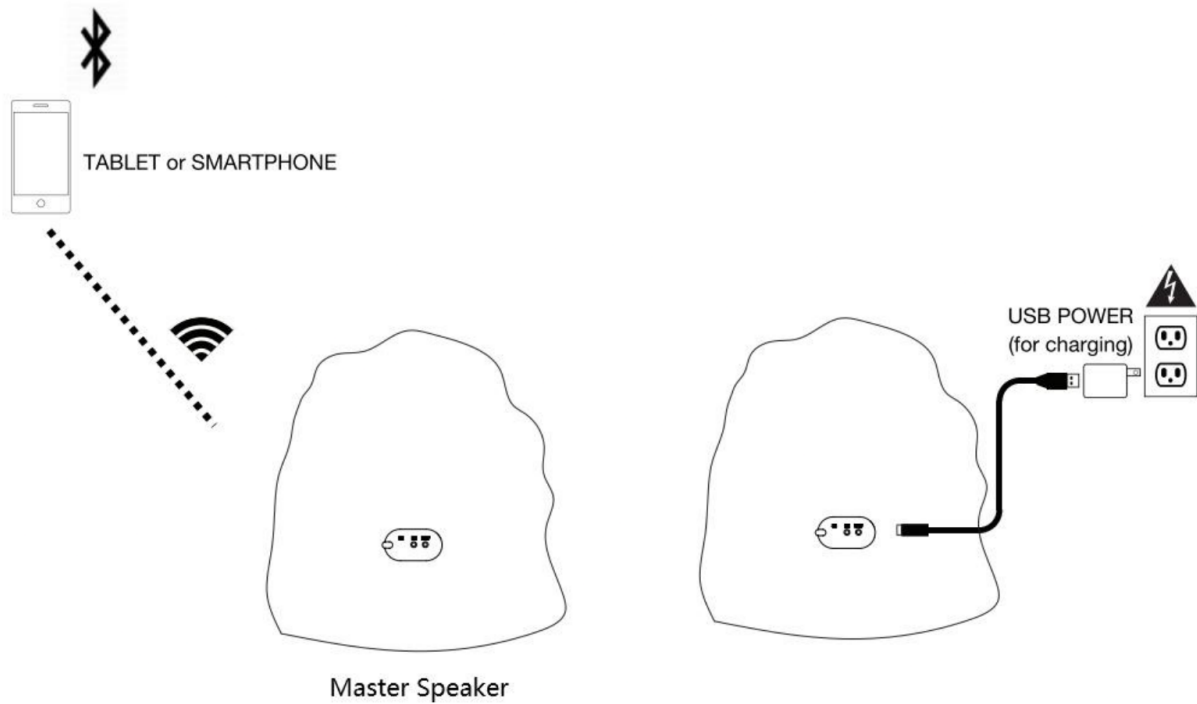
Disclaimer:

For optimal charging speed and playtime, please ensure that the speakers solar panel is in direct sunlight and free of dust, dirt and pollen. If you are wanting to place these speakers in shaded areas – read further.

Solar Panel Maintenance:

Please clear your solar panel at least every 6 months. Most detergents are safe. For the best results, use the same supplies that you use to clean your vehicle at home.

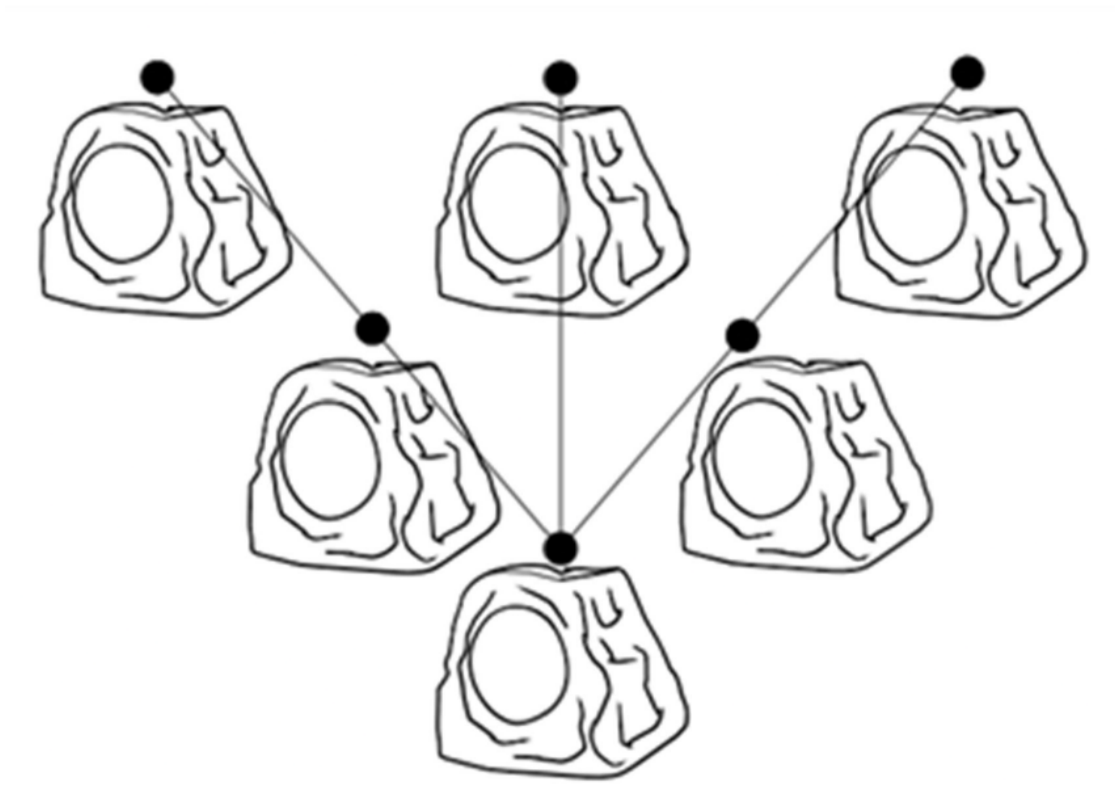
1. Please do not allow the battery to get below 20%. Doing so dramatically increases the recharging time unless you use the included USB charging cable.
2. When you are approaching the 20% capacity thresh-hold, a warning will be played every 30 seconds reminding you to allow the speaker time to recharge.
3. These speakers automatically turn off after not being used for 10 minutes.



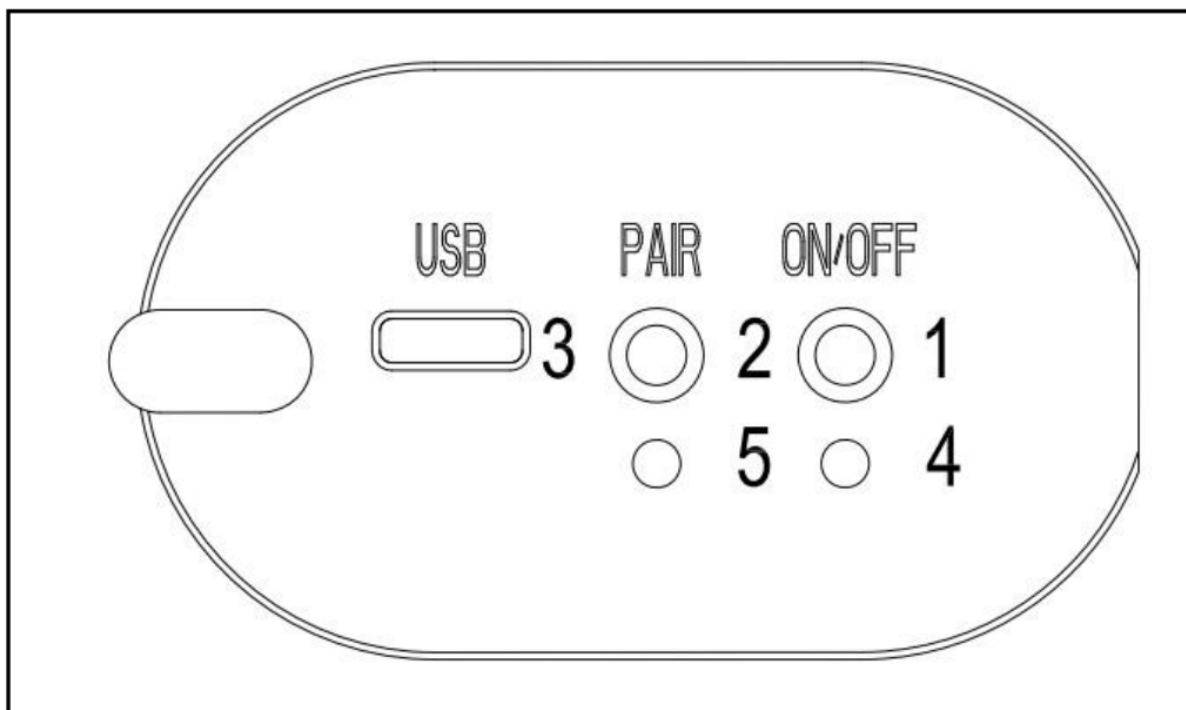
| LED COLOR | FUNCTION | STATUS |
|---------------------------|------------|------------------------------|
| RED | Charging | Battery Charging |
| OFF | Charging | Fully Charged |
| Blue (Blinking) | Bluetooth | Attempting to Pair |
| Blue (Solid) | Bluetooth | Pairing Successfull |
| Blue-White (Solid) | Multi-Link | Master Speaker |
| White (Blinking) | Multi-Link | Attempting to link to Master |
| White (Solid) | Multi-Link | Linked to Master |

VOICE PROMPTS:

- Broadcast Audio Enabled
- Broadcast Mode Enabled
- PAIRING
- Bluetooth Connected
- Bluetooth Disconnected
- About 40 percent battery remain
- About 60 percent battery remain
- About 80 percent battery remain
- 100 percent battery remain
- Battery Low



Back panel



Power ON/OFF

Long press to power on and off Double press the power button to change LED light mode.

Mode 1: Off

Mode 2: Solid 7 Colors to be selected.

Mode 3: Beat to Music Changing colors.

When On, Hold the power button for 3 Seconds for battery notification.

Pair (Multi-Link)

Short press PAIR button to be linking speaker, LED in white. Double press PAIR button to be master speaker, LED in Blue-white. Hold the PAIR button 3 Seconds for to disconnect Bluetooth®. You will hear “Bluetooth disconnected”.

Note: will automatically power off after 10 minutes if no audio is playing.

USB-C charging

Charging LED

RED – Speaker Battery is charging.

Off – Speaker Battery fully charged.

Bluetooth /Multi-Link LED

Bluetooth LED

BLUE BLINKING – Attempting to Bluetooth pair.

SOLID BLUE- Speaker has successfully paired via Bluetooth.

Multi-Link LED

Master speaker:

SOLID BLUE-WHITE — Master Speaker has successfully paired via Bluetooth / Multi-link. and speaker is playing.

Additional linking speakers:

WHITE BLINKING – Attempting to Multi-link pair.

SOLID WHITE – Speaker has successfully paired via Multi-link. and Speaker is playing.

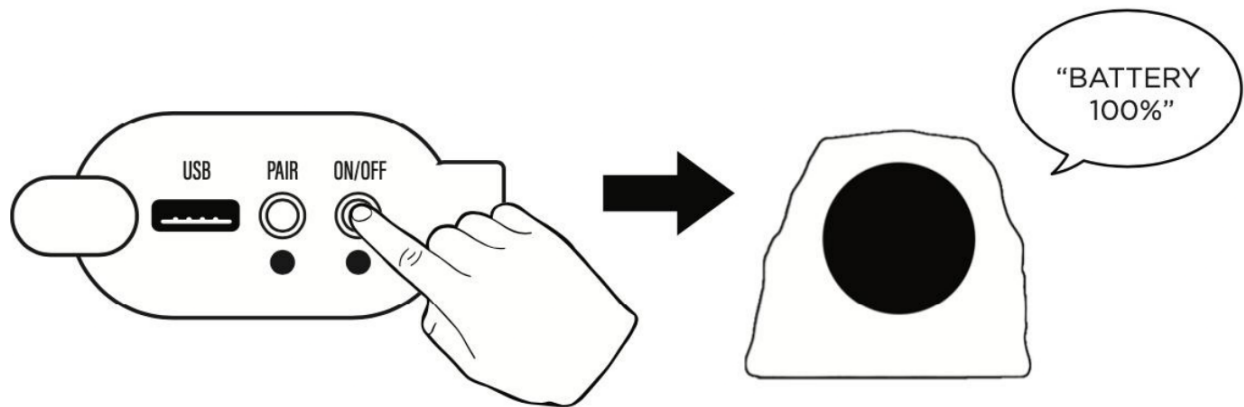
BLUETOOTH PAIRING NAME:

Gemini GHRK-500LTMS

MULTI-LINK CONNECTION

First ensure all speakers are sufficiently charged. Press and hold ON/OFF button for 3+ seconds to power speaker on. Once on, press and hold the power button down again for 3+ seconds to check battery charge status.

Press ON/OFF button to power OFF.



First time connecting?

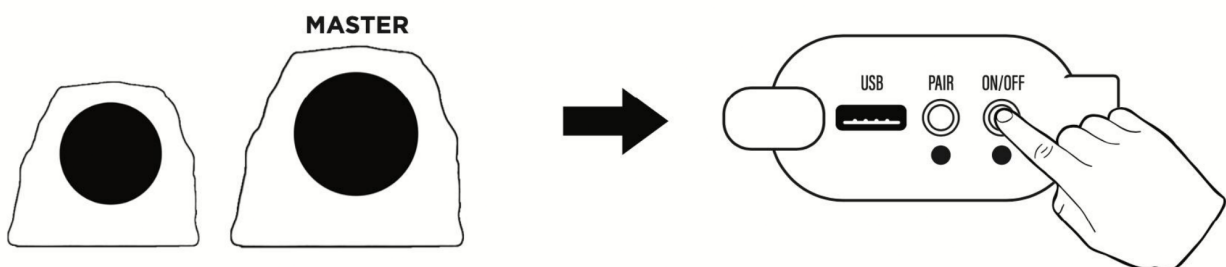
Skip this and proceed to Step 1

If you've already connected to any LTMS speakers from your playback device, go to Bluetooth settings and under

"Gemini GHRK-500LTMS" and select "Forget this device".



STEP 1: Power ON speaker you wish to be your master speaker. This will be the main speaker you connect to, Link speakers will connect to this master individually.

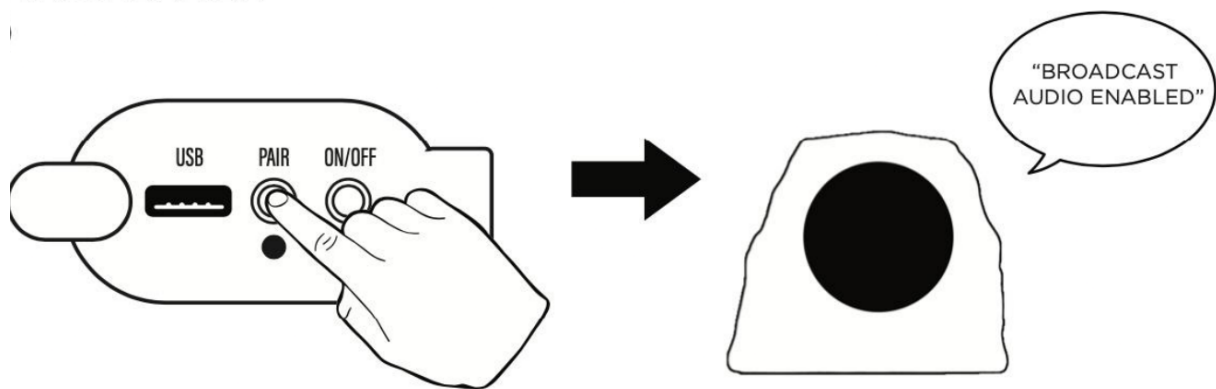


STEP 2: Once powered on, you will see a flashing LED under the PAIR button:

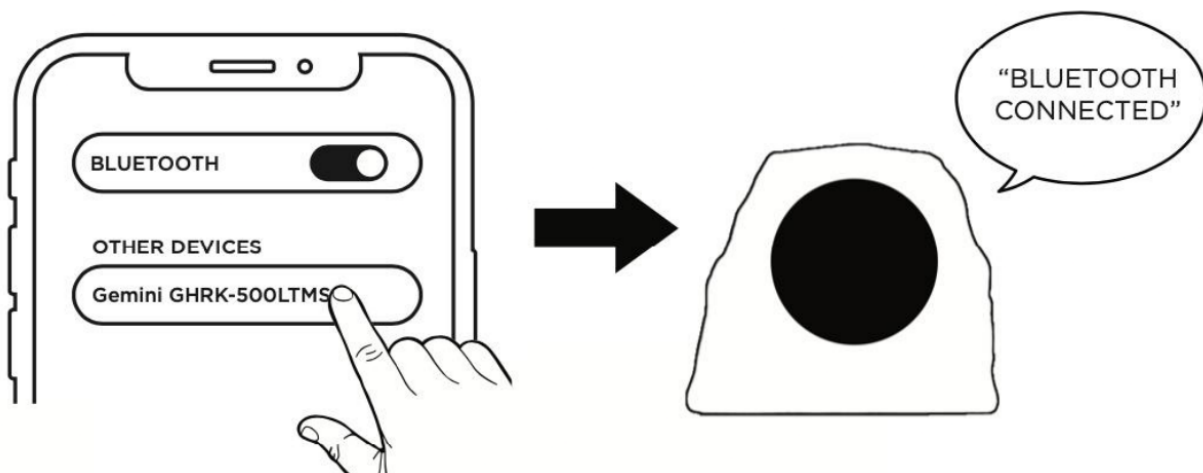
If FLASHING WHITE = Speaker is set as LINK SPEAKER (Press PAIR button once to set as master)

Once set as MASTER SPEAKER, you will hear announcement "Broadcast Audio Enabled".

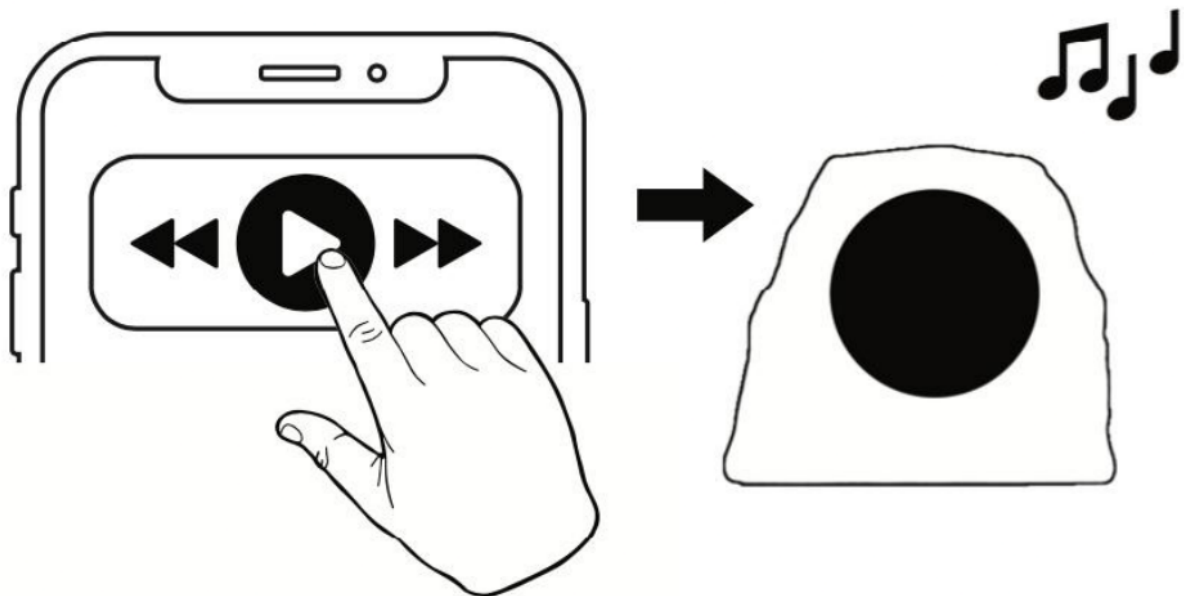
When FLASHING BLUE/WHITE = Speaker is set as MASTER SPEAKER (Proceed to step 3)



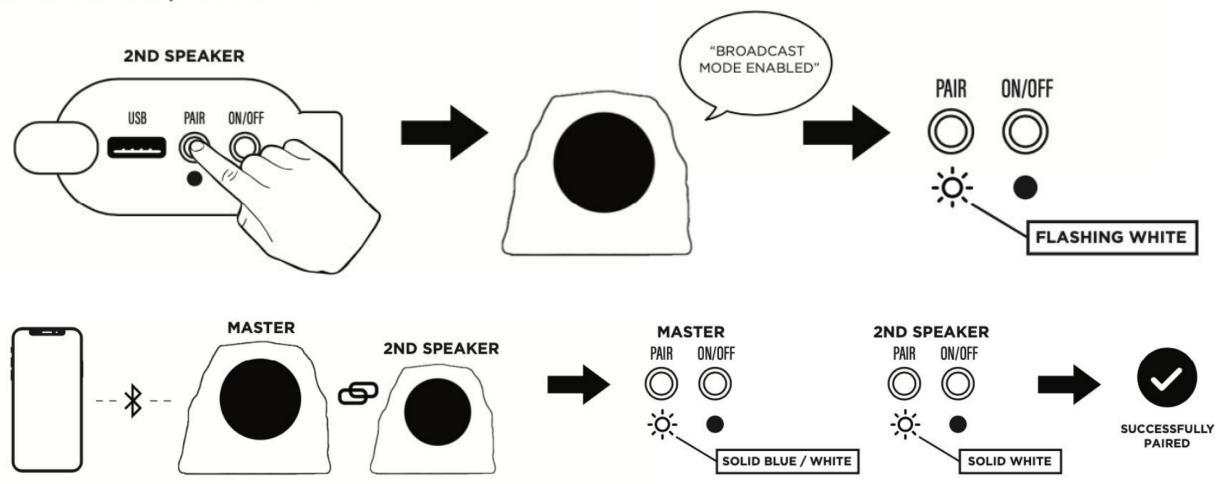
STEP 3: Turn ON Bluetooth function on your playback device, select "Gemini GHRK-500LTMS".



Play some audio. You should now hear your audio playback out of the master speaker.



STEP 4: Power ON the next speaker. If LED is WHITE, speaker is set as “LINK” and it’s ready to play. If not, SINGLE CLICK the PAIR button to assign as “LINK” speaker. Speaker will announce “Broadcast mode enabled” and LED should be flashing WHITE while the speakers attempt to pair. Linking should occur automatically, once successfully linked the LED on 2nd speaker will be FULLY LIT in WHITE. Master speaker will be fully lit in BLUE/WHITE.



SPECIFICATIONS For GHRK-500LTMS

| | |
|------------------------------------|--|
| Active/Passive | Active |
| Amplifier Type (CLASS) | D |
| Driver Size | 5" |
| Total Power (PEAK) | 30W |
| Bluetooth | BT5.3 — Range >10 Meters with Multi-Link |
| Frequency Response | 90Hz-12kHz |
| Lighting | YES |
| Sensitivity & Impedance | 86dB, 40 |

Waterproof Grade Rating IPX5
Enclosure Material Resonant-absorbing resin cabinet
Power Adapter 5V USB + Solar Charging
Battery Specs 4000mAH Lithium-Ion Rechargeable Battery

SPECIFICATIONS For GHRK-500LTMS-PR

Active/Passive Active
Amplifier Type (CLASS) D
Driver Size 5" x2
Total Power (PEAK) 30W x 2
Bluetooth BT5.3 — Range >10 Meters with Multi-Link
Frequency Response 90Hz-12kHz
Lighting YES
Sensitivity & Impedance 86dB, 40
Waterproof Grade Rating IPX5
Enclosure Material Resonant-absorbing resin cabinet
Power Adapter 5V USB + Solar Charging
Battery Specs 2 x 4000mAH Lithium-Ion Rechargeable Batteries

Responsible Party Name:

Innovative Concepts & Designs LLC

Company address:

458 Florida Grove Road Perth Amboy, NJ, 08861 USA