

[SANSUI Soundcore Mini User Manual](#)

[Manualsum](#), simplified manuals

Table of Contents

- [SANSUI Soundcore Mini User Manual](#)
 - [USER INSTRUCTIONS](#)
 - [WARNING](#)
 - [WHAT'S IN THE BOX](#)
 - [PRODUCT SPECIFICATIONS](#)
 - [CONTROL PANEL](#)
 - [FUNCTION PANEL](#)
 - [PLAYBACK SOURCES](#)
 - [BLUETOOTH CONNECTION](#)
 - [BATTERY AND CHARGING](#)
 - [TROUBLESHOOTING](#)

SANSUI Soundcore Mini User Manual

SANSUI Soundcore Mini User Manual

SANSUI Wireless Home Speaker User Manual

Guangzhou One Six Eight Electronics Ltd Wireless Home Speaker User Manual

[2BCEE-MINI](#)



[Manualsum](#)

USER INSTRUCTIONS

BEFORE USING THE PRODUCT, READ ALL SAFETY INSTRUCTIONS AND USAGE GUIDELINES TO AVOID POTENTIAL HAZARDS. KEEP THIS MANUAL BOOK IN AN EASILY ACCESSIBLE LOCATION.

WARNING

TO PREVENT OPERATIONAL ISSUES OR SERIOUS DAMAGE TO THE DEVICE, PLEASE ADHERE TO THE FOLLOWING POINTS:

1. AVOID INTENSE SUNLIGHT EXPOSURE, RAIN, AND WATER. DO NOT PLACE THE PRODUCT IN HOT AND HUMID ENVIRONMENTS FOR EXTENDED PERIODS.
2. THIS PRODUCT SHOULD NOT BE EXPOSED TO DRIPS OR LIQUID SPRAYS AND ITEMS CONTAINING LIQUIDS, SUCH AS VASES, SHOULD NOT BE PLACED ON TOP OF THE PRODUCT.
3. DO NOT OPEN THE INTERNAL COMPONENTS OF THE PRODUCT, AS IT MAY CAUSE ELECTRIC SHOCK HAZARD AND VOID THE WARRANTY.
4. DO NOT RAISE THE VOLUME TO THE MAXIMUM POSITION WHEN CONNECTING THE PRODUCT TO OTHER EQUIPMENT, AS IT MAY CAUSE SOUND DISTORTION THAT CAN DAMAGE THE SPEAKERS.
5. AVOID DROPPING THE PRODUCT, AS IT MAY CAUSE DAMAGE.
6. IF THE PRODUCT IS DAMAGED, TAKE IT TO AN EXPERIENCED TECHNICIAN.

WHAT'S IN THE BOX

- UNIT SOUNDCORE MINI SPEAKER
- USB TYPE-C CABLE
- LINE IN CABLE
- USER MANUAL

PRODUCT SPECIFICATIONS

POWER: 40W

IMPEDANCE: 4Ω

FREQUENCY RESPONSE: 50Hz - 20KHz

S/N RATIO: 280dB

SENSITIVITY: 300MV

WIRED CONNECTIVITY: LINE IN, AUX OUT

WIRELESS CONNECTIVITY: BLUETOOTH V5.0

SUPPORTS: USB, TWS, EQ

DC INPUT VOLTAGE: 5V / 2A

BATTERY CAPACITY: 7.4V / 2,600mAh

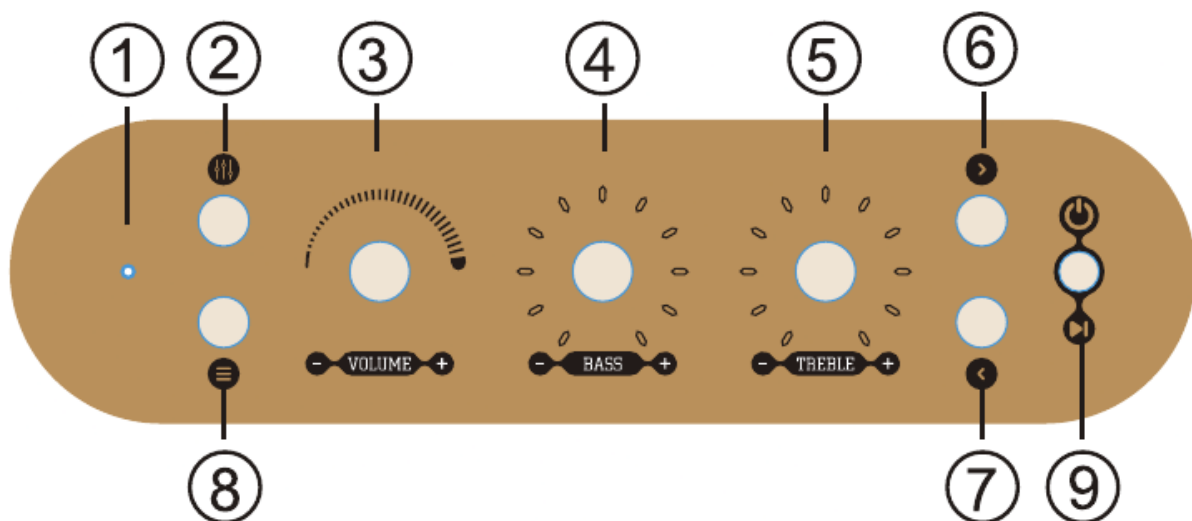
PLAYBACK TIME: 4 — 5 HOURS

CHARGING TIME: 3 —4 HOURS

DIMENSIONS: 220 MM x 88 MM x 127 MM

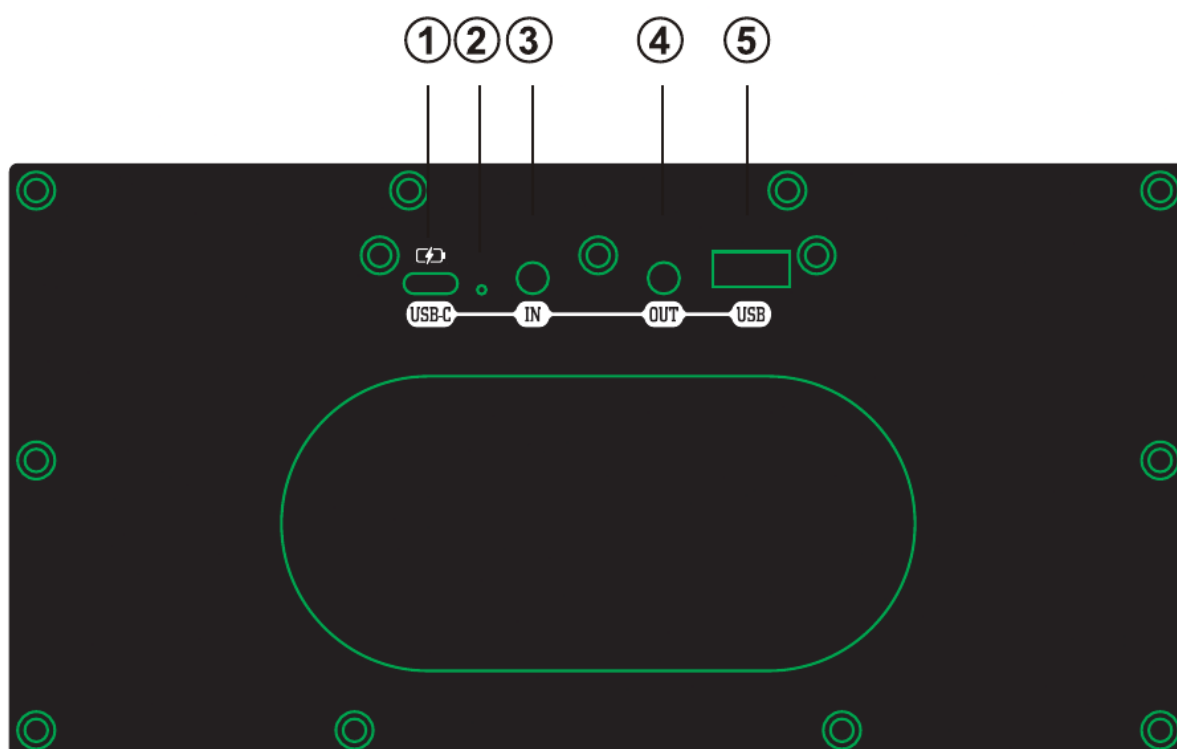
WEIGHT: 1.65 KGS

CONTROL PANEL



1. SELECTED MODE INDICATOR LIGHT BLUE INDICATES BLUETOOTH MODE GREEN INDICATES LINE IN MODE
2. EQ MODE (NORMAL, BASS BOOST, VOCAL) LONG PRESS FOR DISCONNECTING BLUETOOTH
3. VOLUME ADJUSTMENT KNOB
4. BASS ADJUSTMENT KNOB
5. TREBLE ADJUSTMENT KNOB
6. NEXT SONG BUTTON
7. PREVIOUS SONG BUTTON
8. MODE SELECTION BUTTON - BLUETOOTH MODE - LINE IN MODE - USB MODE - LONG PRESS FOR TWS
9. ON / OFF SWITCH - LONG PRESS FOR ON / OFF - (SINGLE PRESS FOR PLAY / PAUSE)

FUNCTION PANEL



1. USB TYPE-C POWER INPUT JACK DC 5V / 2A
2. CHARGING INDICATOR LIGHT
3. LINE IN CABLE JACK
4. AUX OUT CABLE JACK
5. USB PORT

PLAYBACK SOURCES

PLAYBACK FROM USB: INSERT USB INTO THE USB PORT, PLAYBACK WILL START AUTOMATICALLY.

PLAYBACK FROM LINE IN CABLE: DISCONNECT ALL BLUETOOTH CONNECTIONS BEFORE CONNECTING THE LINE IN CABLE AND CONNECT IT TO THE AUDIO SOURCE TO BEGIN.

BLUETOOTH CONNECTION

1. TURN ON THE PRODUCT.
2. BY DEFAULT, THE PRODUCT IS AUTOMATICALLY SET TO BLUETOOTH MODE WHEN TURNED ON. IF NOT, PRESS THE MODE SELECTION BUTTON REPEATEDLY UNTIL THE BLUETOOTH MODE IS SELECTED.
3. ENSURE THAT BLUETOOTH FUNCTIONALITY ON THE BLUETOOTH DEVICE IS ENABLED.
4. CONNECT THE BLUETOOTH DEVICE TO THE PRODUCT BY SELECTING "SOUNDCORE MINI" IN THE BLUETOOTH SETTINGS OF THE BLUETOOTH DEVICE.

5. ON SUCCESSFUL CONNECTION, A VOICE PROMPT “BLUETOOTH CONNECTED” WILL INDICATE THAT THE PRODUCT IS NOW CONNECTED TO THE BLUETOOTH DEVICE.

BATTERY AND CHARGING

CHARGING:

CONNECT THE USB TYPE-C POWER CABLE TO THE PRODUCT AND TO A SUITABLE POWER SOURCE.

CHARGING TIME: 3 — 4 HOURS

PLEASE CHARGE THE SPEAKER TO FULL CAPACITY BEFORE INITIAL USE. PLAYBACK AND CHARGING TIMES ARE ESTIMATED VALUES TESTED IN PRACTICAL ENVIRONMENTS AND MAY VARY DEPENDING ON INDIVIDUAL USAGE HABITS.

TROUBLESHOOTING

ISSUE	CAUSE	SOLUTION
NO INDICATION OF PRODUCT POWERING ON	THE PRODUCT'S BATTERY IS DEPLETED	CHARGE THE BATTERY FIRST.
	SELECTED MODE DOES NOT MATCH CONNECTED DEVICE	CHOOSE THE MODE THAT CORRESPONDS TO THE CONNECTED DEVICE (BLUETOOTH, LINE IN, USB)
BLUETOOTH CONNECTION FAILURE	THE SELECTED PRODUCT MODE IS NOT BLUETOOTH.	ENSURE THE PRODUCT IS IN BLUETOOTH MODE BEFORE CONNECTING BLUETOOTH DEVICES.
	THE DISTANCE BETWEEN THE PRODUCT AND BLUETOOTH DEVICE IS TOO FAR.	BRING THE BLUETOOTH DEVICE CLOSER TO THE PRODUCT AND RETRY.
	BLUETOOTH FUNCTION ON THE BLUETOOTH DEVICE IS NOT ACTIVATED.	ACTIVATE THE BLUETOOTH FUNCTION ON THE BLUETOOTH DEVICE BEFORE TRYING AGAIN.