

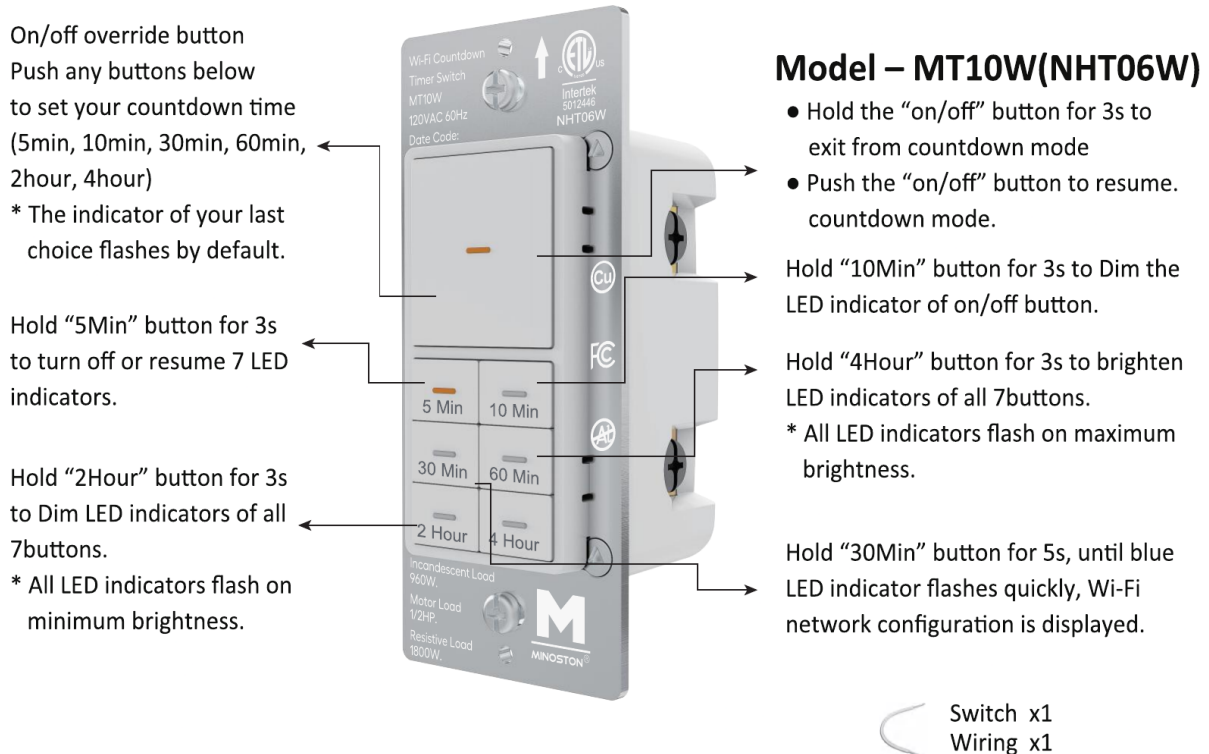
[MINOSTON WI-FI COUNTDOWN TIMER SWITCH USER MANUAL 2AQURNHT06W](#)

[Manualsum](#), simplified manuals

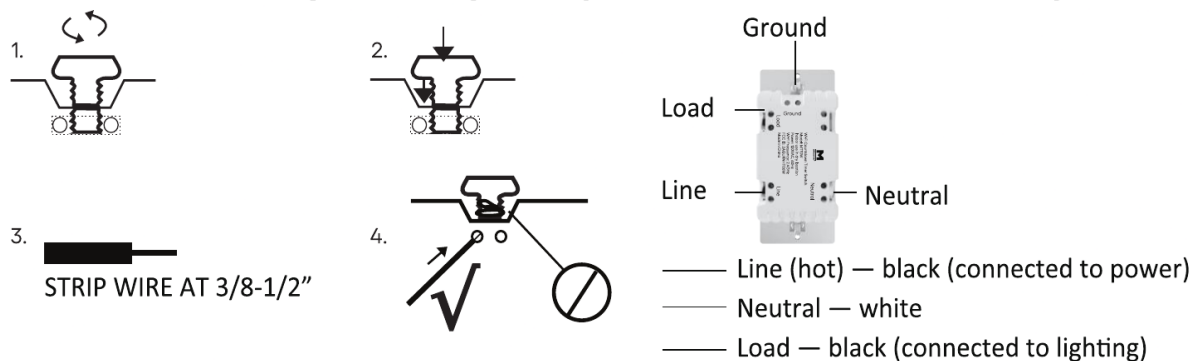
Table of Contents

- [MINOSTON WI-FI COUNTDOWN TIMER SWITCH USER MANUAL](#)
 - [HOW TO INSTALL THE WIRES](#)
 - [Single - pole wiring](#)
 - [How to Pair the Network?](#)
 - [How it Works](#)
 - ■ [A Download the app](#)
 - [B Technical Guidance](#)
 - [C EASY TO SET UP](#)
 - [D Voice control](#)

MINOSTON WI-FI COUNTDOWN TIMER SWITCH USER MANUAL



HOW TO INSTALL THE WIRES



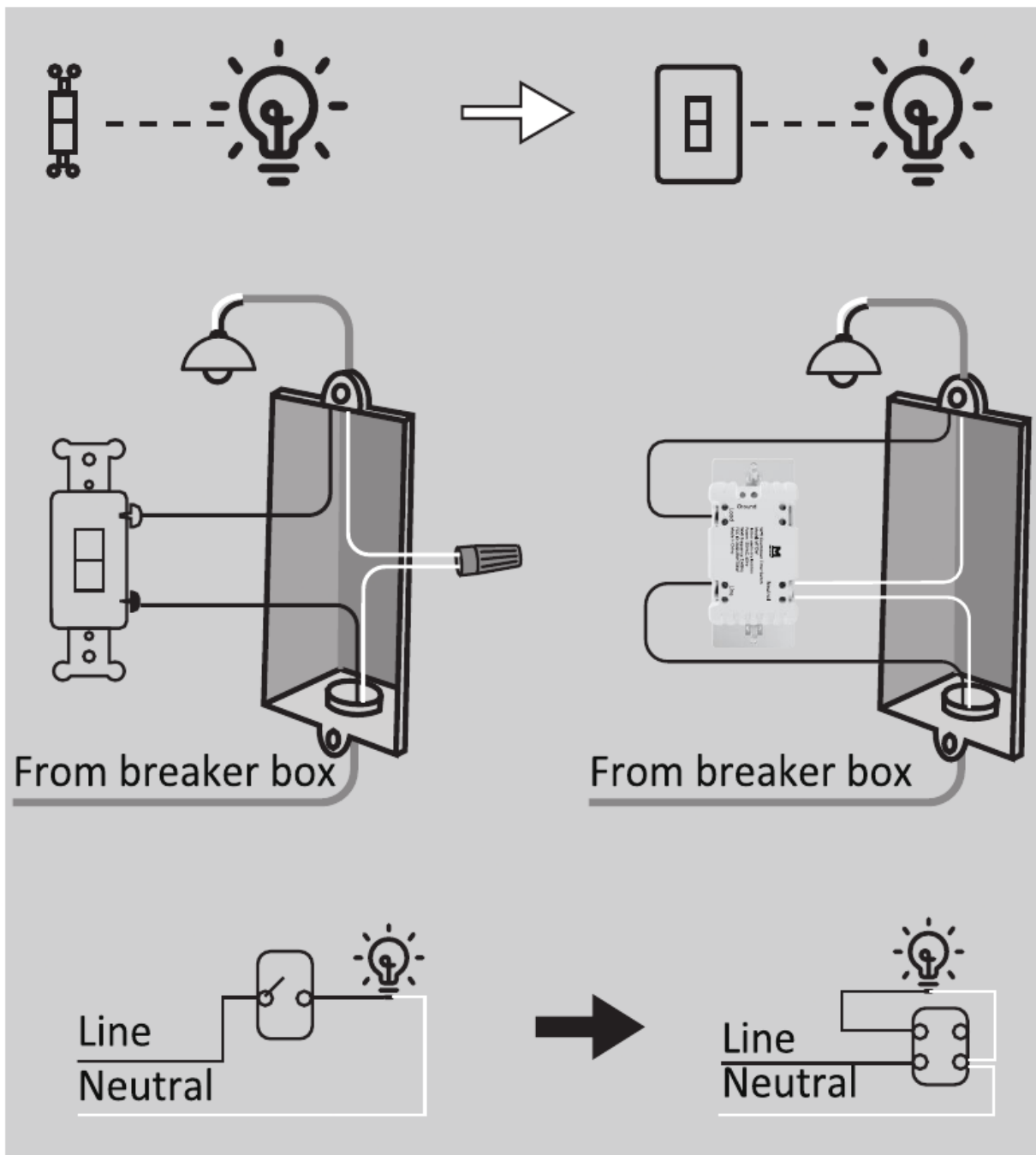
1. Unscrew: carefully turn the screw counterclockwise to leave enough space for the wire to be inserted. Do not unscrew the screws completely.
2. Press down: Once loosened, use your finger so it catches the thread.
3. Insert the wire: make sure the wire is completely straight, then insert it into the terminal while holding down the screw. Do not wrap the wire around the screw!
4. Tighten: Turn the screw clockwise to tighten the wire. Make sure the wires are locked!

Note: There are 2 holes for each terminal can be used in the connection.

You can use a jump wire or the second hole at the terminal to connect.

Single - pole wiring

1. Tool: Please prepare a flat head screwdriver.
2. Turn power OFF at circuit breaker or fuse box.
3. Remove wallplate.
4. Remove the switch mounting screws.
5. Disconnect the wires and label them after remove the old switch.
(Please use our sticker)
6. Carefully remove the switch from the switch box. (DO NOT disconnect the wires.)
7. There are up to four screw terminals on the smart switch, these are marked (Please check <HOW TO INSTALL THE WIRES>)
8. Fix the wallplate with screws after wiring succeed. (Please use our screws.)
9. The Ground was excluded from the diagram to simplify the illustration. Please Make sure all ground wires are connected to all switches respectively.



How to Pair the Network?

1. Turn on Bluetooth on your phone.
2. Open Minoston or Smart Life APP and log in to your account.
3. Make sure the device indicator light is flashing. If it is not flashing, press and hold the "30 min" button for 5 seconds to put the device into network pairing mode.
4. Click "Add device" to add the device.
5. The APP will search for nearby devices and then display them on the "Add device" page. After finding the device, click "Add".
6. Select wifi (2.4Ghz band) and enter the password.
7. Wait for the addition to be completed.

How it Works

A Download the app



Scan the QR code above or search Minoston on the Apple App Store or on Google Play

B Technical Guidance



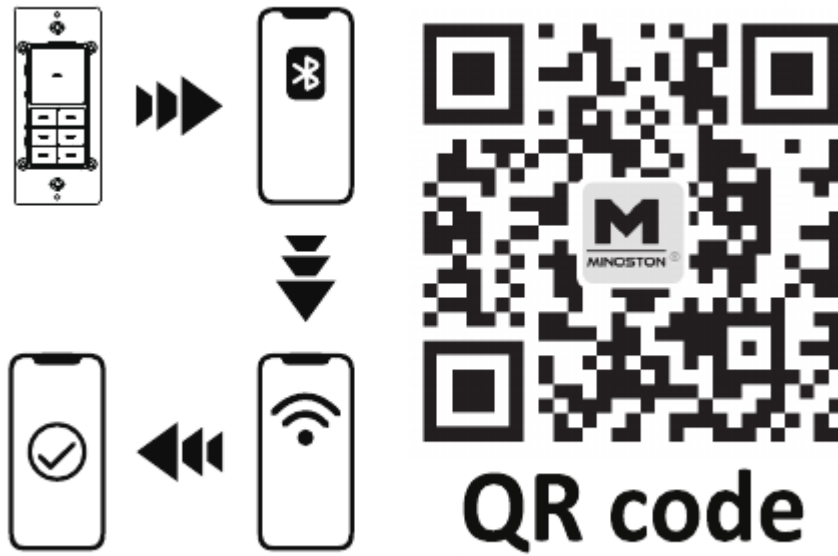
Amazon-Echo



Google-Home

The Wi-Fi Countdown Timer Switch can be also used with Amazon Echo and Google Home. Please scan the QR code below and follow the instructions if you have any trouble pairing with them.

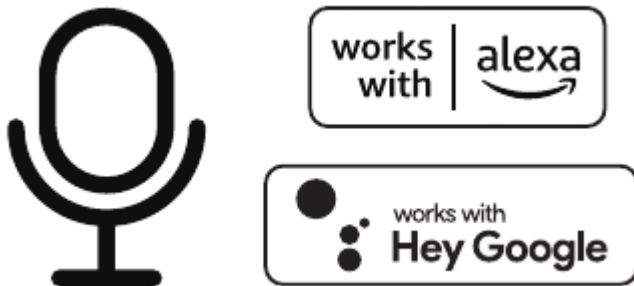
C EASY TO SET UP



D Voice control

Compatible with Amazon

Alexa and Google Assistant



Follow the steps in the Amazon Alexa or Google Assistant app to connect the Minoston app or select "Support" in the Minoston app