

# User Manual

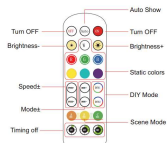
2AT7WU-CWY004

## Permanent Outdoor Eaves Light



⚠️ **TIPS:** Test the lights before installing. Untest the lights to inspect each light level. Contact us if needed.

### 2.4G Wifi Remote Control

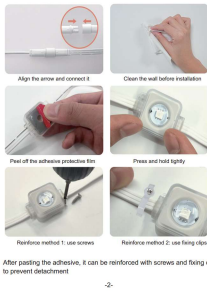


1. Press the red arrow button or long press button "ON" to bind the light to infrared.
2. Long press button "OFF" to unbind the light and remote control.
3. After selecting the appropriate mode, speed and brightness, long press "ON" to turn on the LED light.



-1-

### Installation steps



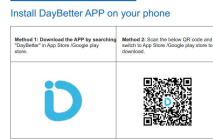
-2-

### Specifications

Input Voltage	DC 24V
Lamp Power	1W/pcs
LED Type	RGB5054
Control Methods	Remote Control/Mobile APP/Voice Control
IP Level	IP67
Brightness	28800MCD
Color Temperature	RGB Addressable
Beam Angle	120°
Lifespan	>=50000H

-3-

### Install APP and Log in



You can either log in by Email verification code or by password.

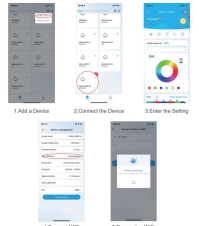
(1) New user or forgotten password please select verification code to log in, then set the password on APP setting page.

(2) Once you set password, you can use password to log in.



-4-

### APP and WiFi Connect Method



⚠️ **TIPS:** New or Bluetooth and WiFi on your smart phone and contact phone to 2, 426, 9171. Contact mobile device method, and use which phone to order 9171.

**Note: 5GHz WiFi is not supported**

-5-

**Link Alexa or Google Home**

**Method 1: Bind Alexa on DayBetter APP (Recommended)**  
 (Go to APP setting page and click Alexa tab to call LINK page. (2) Then just click LINK on the link page. (3) Wait a second then see how find device on Alexa APP.

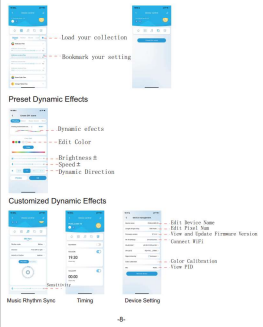
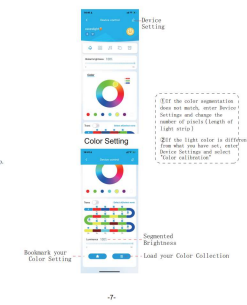


**Method 2: Bind DayBetter on Alexa APP (NOT recommended)**  
 Search and enable "DayBetter" skill on Alexa APP. Please visit the QR code for more help.



Please scan the QR code for how to link Google Home

**Main User Interface**



**Trouble Shooting**

- a) APP can not find the device.**
  - Make sure the phone bluetooth is on.
  - Allow the permissions of APP-APP needs them to connect.
  - Check the light is on.
  - As APP turn off bluetooth and turn on bluetooth again, then start APP to add device again.
  - Ensure phone within 4ft from product when connecting.
  - Your phone may be incompatible with the APP, try another phone.
  - Failed to connect to WIFI.
  - Check WIFI supports 2.4GHz, Not 5GHz.
  - Power device by power on and off 3-4 times until light flash.
  - Bring device close to WIFI router to improve signal.
  - App device and connect to WIFI again.
  - Remove device from DayBetter APP and add again.
  - Update Alexa, and Link Alexa again.
- b) All lights don't work.**
  - Check power is on.
  - Press ON and press "brightness up" multi times on remote.
  - Connect APP and turn on light and turn up brightness.
  - Reinstall all parts.
- c) Some light beads keep off or fail working.**
  - Contact our support team.
- Attention**
  - Use the products with provided adapter and control line only.
  - Do NOT extend more steps to avoid overload which is unsafe.
  - Do NOT bend any otherwise beads and parts may damage.
  - Please turn off the power and taking the adapter when the strip light will not be used for a long time.

**Customer Service**

If you have any questions or product issues, please contact us via the email on the package or get the product support on the order page in your purchasing account. All messages will be replied within 24 hours.

**Information to User**

**Note:** This equipment has been tested and found to comply with the limits for a Class B digital device, pursuant to part 15 of the FCC Rules. These limits are designed to provide reasonable protection against harmful interference in a residential installation. This equipment generates, uses and can radiate radio frequency energy and, if not installed and used in accordance with the instructions, may cause harmful interference to radio communications. However, there is no guarantee that interference will not occur in a particular installation. If this equipment does cause harmful interference to radio or television reception, which can be determined by turning the equipment off and on, the user is encouraged to try to correct the interference by one or more of the following measures:
 

- Reorient or relocate the receiving antenna.
- Increase the separation between the equipment and receiver.
- Connect the equipment into an outlet on a circuit different from that to which the receiver is connected.
- Consult the dealer or an experienced radio/TV technician for help.

 The manufacturer responsible for compliance could void the user's authority to operate the equipment.
 

**RF Exposure Information**  
 This equipment complies with FCC radiation exposure limits set forth for an uncontrolled environment. This equipment should be installed and operated with minimum distance 20cm between the radiator and your body.

**Important:**  
 Change or modifications not expressly approved by the manufacturer responsible for compliance could void the user's authority to operate the equipment.