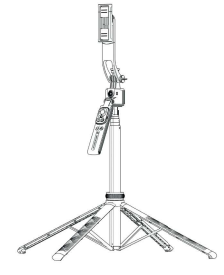
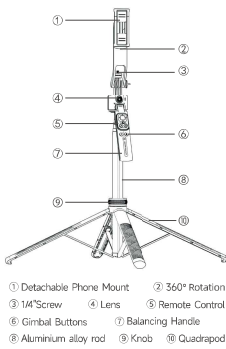


C17 Tracking Gimbal Quadrapod



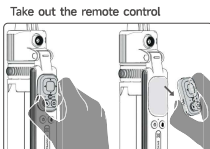
User Manual

Part Description



- ① Detachable Phone Mount
- ② 14° Screw
- ③ 360° Rotation
- ④ Lens
- ⑤ Remote Control
- ⑥ Gimbal Buttons
- ⑦ Balancing Handle
- ⑧ Aluminium alloy rod
- ⑨ Knob
- ⑩ Quadrapod

Remote Control



**Take out the remote control**  
Turn on the remote control and the light flashes to enter the pairing state. Search "Selfie TK" with your phone to match, after successful pairing, the indicator light will turn off.

**Use the remote control**

**Arrow Button**  
Click to pan, Double-click to like

**Like Button**  
Click to pan, Double-click to like

**Power Switch**  
Push left to switch on, Push right to switch off

**Camera Button**  
Click to shoot photos/videos

**Mouses**  
Click on the mouse to click, Press and hold the mouse and use the arrow buttons to control the mouse, release to lock the mouse position.

Connect Your Phone

**First time connection:**  
Turn on the remote control and the light flashes to enter the pairing state. Search "Selfie TK" with your phone to match, after successful pairing, the indicator light will turn off.

**In the unconnected state:**  
No operation of the remote control for 5 mins, it will automatically shut down. (Repeatedly toggle the power key to turn on)

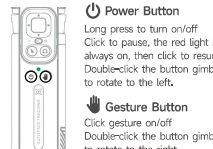
**Automatic connection:**  
Turning on the remote control automatically connects the paired phone.

**iOS phones need to have the AssistiveTouch feature enabled before use.**  
(Steps: Settings->Accessibility->Touch->Turn on AssistiveTouch)

**iOS**  
Mouse displays as a dot

**Android**  
Mouse display as arrow/dot

Using the Gimbal



**Power Button**  
Long press to turn on/off, Click to pause, the red light is always on, then click to resume, Double-click the button gimbal to rotate to the left.

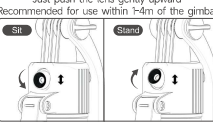
**Gesture Button**  
Click gesture on/off, Double-click the button gimbal to rotate to the right

When the gimbal is in rotating mode, click the power button to stop rotating and light up red, then click again to return to the power on state

**Gimbal Indicator Light**

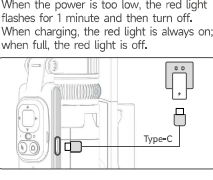
Indicator Status	Gimbal Status
Green light always on	Gesture on + recognised to person
Green light flashing	Gesture on + not recognised to person
Blue light is always on	Gesture off + recognised person
Blue light flashing	Gesture off + not recognised
Red light is always on	Phone
Red light flashing	Low battery

Adjustable Gimbal Lens



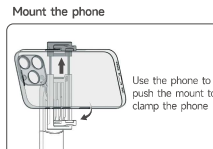
Just push the lens gently upward (Recommended for use within 1-4m of the gimbal)

Gimbal Charging



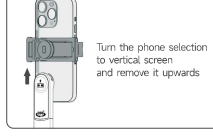
When the power is too low, the red light flashes for 1 minute and then turn off. When charging, the red light is always on; when full, the red light is off.

Detachable Phone Mount



**Mount the phone**  
Use the phone to push the mount to clamp the phone

Remove the phone mount



Turn the phone selection to vertical screen and remove it upwards

Phone Holder



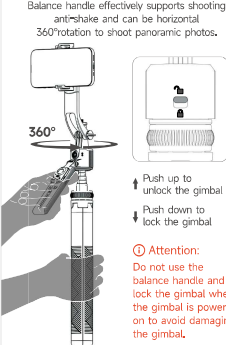
**Open the phone mount**

Phone holder



Turn the phone selection to vertical screen and remove it upwards

Using The Balance Handle

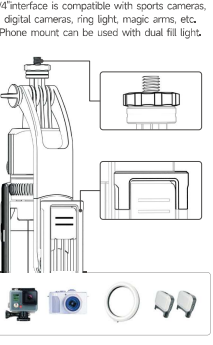


Balance handle effectively supports shooting anti-shake and can be horizontal 360° rotation to shoot panoramic photos.

Push up to unlock the gimbal, Push down to lock the gimbal

**Attention:**  
Do not use the balance handle and lock the gimbal when the gimbal is power on to avoid damaging the gimbal.

Widely Compatible



1/4" interface is compatible with sports cameras, digital cameras, ring light, magic arms, etc. Phone mount can be used with dual fill light.

Adjustable Quadrapod



Turn the knob to the right to freely adjust the quadrapod spread angle. After the adjustment is complete, lock it tightly.

Specification

Main Material	ABS+Aluminum Alloy
Clamping Range	65-95mm
Folded Length	340mm
Extended Length	1635mm
Product Size	360x88x44mm
Product Weight	545g
Battery	CR2032(Replaceable)

Remind

- Remote control compatibility: Android 4.0 or above, (OS 5.0) or above
- Android device settings: If you change your "volume key function" on the camera, be sure to change it to the "default value" or "Shooting". Setting the remote control to work.

Thank you for your support!

CE RoHS

This device complies with Part 15 of the FCC Rules. Operation is subject to the following two conditions: (1) this device may not cause harmful interference, and (2) this device must accept any interference received, including interference that may cause undesired operation.

Changes or modifications to this unit not expressly approved by the party responsible for compliance could void the user's authority to operate the equipment.

NOTE: This equipment has been tested and found to comply with the limits for a Class B digital device, pursuant to Part 15 of the FCC Rules. These limits are designed to provide reasonable protection against harmful interference in a residential installation. This equipment generates uses and can radiate radio frequency energy and, if not installed and used in accordance with the instructions, may cause harmful interference to radio communications. However, there is no guarantee that interference will not occur in a particular installation. If this equipment does cause harmful interference to radio or television reception, which can be determined by turning the equipment off and on, the user is encouraged to try to correct the interference by one or more of the following measures:

- Reorient or relocate the receiving antenna.
- Increase the separation between the equipment and receiver.
- Connect the equipment into an outlet on a circuit different from that to which the receiver is connected.
- Consult the dealer or an experienced radio/TV technician for help.

This device and its accessories must not be co-located or operation in conjunction with any other antenna or transmitter.

Radiation Exposure Statement  
The device has been evaluated to meet general RF exposure requirements in portable exposure condition without restriction.