



**Dear Valuable Clients:**

Thank you for you used the keyboard and mouse set. This mouse is easy to setup. But, we recommend you to read all the guide, you will know more information about the knowledge of keyboard and mouse.

**This is the high-grade version, please learn more details.**

Oct. 08, 2024

---

## TABLE OF CONTENTS

Quick Installation Guide .....	01
Packing Contents .....	01
Important tips .....	01
Function Introduction .....	02
Bluetooth Installation --- 1 install to Mac OS Devices.....	03
Important Tips 1 ----Keyboard Select Connection Way.....	03
Important Tips 2 ----2.4G USB Dongle re-pair with Mouse .....	04
Bluetooth Installation --- 2 install to Windows OS Devices.....	05
Important Tips 3 .....	06
Bluetooth Installation --- 3 install to Android OS Devices.....	06
Bluetooth Installation --- 4 install to iOS Devices---iPad.....	07
How to input the special symbols (United Kingdom) .....	08
USB C Adapter Inroduction .....	08

---

### Quick Installation Guide

It has three different methods: 2.4G USB Dongle, 2.4G USB dongle with USB C adapter and Bluetooth:

At first time to use, it is default via 2.4G USB dongle. Just insert the USB dongle to USB port (or USB C port with USB C adapter ).

#### No.1: 2.4G USB Dongle Installation:

- 1) Just insert the USB dongle into USB port.
- 2) Turn on the keyboard, and press the key fn and 4 together.
- 3) Turn the mouse on, and press the " Pair / mode " to select the 2.4G USB Dongle (green light).

#### No.2: USB C installation:

Insert the USB A to USB C adapter, then install it as the same as No.1.

#### No.3: Bluetooth Installation:

For Mac OS:

- 1) Press the key fn and 1 (or 2, or 3), until the indicator flashing blue light on keyboard.
- 2) On a Mac, go to Apple Menu>System Preferences, then click "Bluetooth" in the sidebar. (You may need to scroll down.) Then, put your pointer over the device in the list and click "Connect" in Keyboard NS-4000.
- 3) Turn the mouse, press the "Pair/mode" key, press 1 time to select BT1 flashing blue light, then press and holding until flash blue light continuously, last click "Connect" in Mouse NS-4000. (single press to select the mode, press and hold 3 seconds to pair)

For windows 10 OS:

- 1) Press the key fn and 1 (or 2, or 3), until the indicator flashing blue light on keyboard.
- 2) on a Windows, go to Start Menu > Settings > Devices > Bluetooth (on) > + Add Bluetooth or other device > Bluetooth. Then click Keyboard NS-4000 to connect.
- 3) This step is similar with installation 3) for Mac OS.

**Installation for iOS, Android, and more details for Bluetooth, please read it in below (Page 03).**

#### Packing Contents:

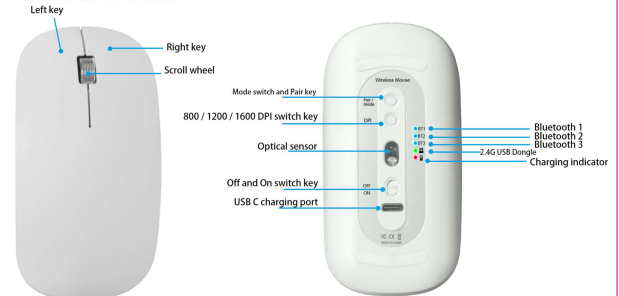
1 x Wireless keyboard and mouse, 1 x USB dongle, 1 x USB C adapter, 1 x Charging Cable, 1 x User Guide Manual.

#### Important Tips:

When you are the first time to use this keyboard and mouse set. The Mac OS may ask you to do the "Keyboard Setup Assistant". Please don't do that, just close that window, it works well.

### Function Introduction (default for macOS):

#### 1.The function of mouse:



As well-know, everyone know to use the left key/ right key/ scroll wheel.

Here specially to introduce the DPI:

The DPI is setting for the moving speed/distance of cursor. If you like the high moving speed, you can select the top speed 1600DPI.

It is easy to set, just click the DPI key to choose the suitable speed. This mouse has 3 level DPI adjustable. The default DPI is 1200.

First click DPI : 1600, Second: 800, Third: 1200, and cycle like this.

#### ☆ About the Mode switch and pair key, it has two function:

- (1) Press 1 time to select the connection way: Bluetooth 1, Bluetooth 2, Bluetooth 3 or 2.4G dongle.
- (2) Press and hold 3 seconds, it is pairing with you computer (or other devices).

#### ☆ This keyboard and mouse is built-in battery.

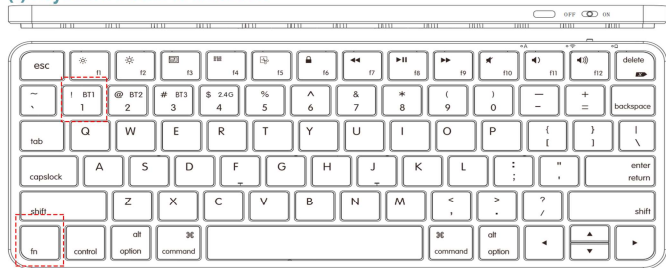
#### 2.The function of F1 to F12:

F1	F2	F3	F4	F7	F8	F9	F10	F11	F12
Screen Lighting Down	Screen Lighting Up	All App software	To change window	Rewind	Play/ Pause	Fast Forward	Mute	Volume Down	Volume Up

## Bluetooth Installations

1, Install to Mac OS Devices (such as Macbook, iMac, Mac Mini/studio...)

### (1) Keyboard install to Macbook



a) Press the "fn" and "1" keys simultaneously, and the indicator light will flash once to indicate that you have selected "BT1".

b) Press and hold the key fn and 1 down for 5s, until the indicator light continuously flashing.

c) Turn on the "Bluetooth" on your Macbook ( **System Preferences ---- Bluetooth** )

You will see the "Keyboard NS-4000" is in the listing, like the left image.  
d) Just click "Connect" to finish the keyboard installation.  
If you want to connect with another device, just do the same way to press the key fn and 2 to connect/pair.

#### ☆ Important Tips 1:

This keyboard has capability to connect with 3 devices via BT1, BT2, BT3 or 2.4G USB Dongle.  
How to **switch to** each device ?

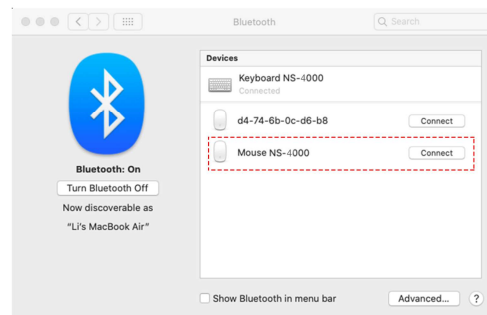
Press once, the indicator light flashes once, indicating the selection of the corresponding channel:  
Press fn and 1 to BT1;                      Press fn and 2 to BT2;                      Press fn and 3 to BT3,  
Press fn and 4 to 2.4G USB Dongle ( Please plug it in USB port or with USB C adapter to USB C port. ).  
Press and hold it down for 5s To Pair.

( We have left the video for installation on the link, welcome to watch on video ! )

### (2) Mouse install to Macbook

When you use the mouse for the first time, it defaults to connecting to the 2.4G USB Dongle.

a) Now, switch to Bluetooth Connection: Press **Pair/mode** Key 1 time to select the **BT1** (slowly flashing blue light). Then, hold the Pair/mode key down for 3s, the indicator light of BT1 continuously flashing blue light. (it is continuously flashing 2 minutes. If you have not finished to connect with your computer or other devices, you need to press and hold it 3s again.)  
**(It is the same method to connect with BT2, BT3 for other devices.)**



b) Turn on the "Bluetooth" on your Macbook ( **System Preferences ---- Bluetooth** ). You will see the "Mouse NS-4000" in the listing of Bluetooth Devices, such as the image on above.

c) Click "Connect" to finish the mouse installation.

#### ☆ Important Tips 2:

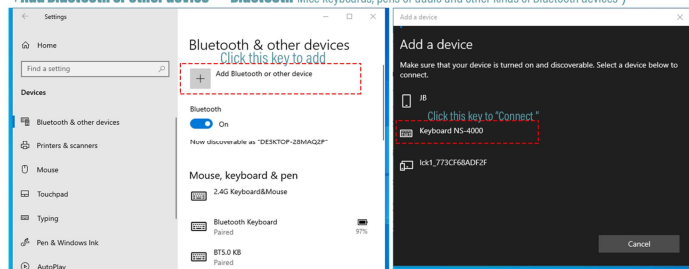
- 1) The mouse offers flexible connectivity options, allowing connection to a device either via 3 Bluetooth channels or a 2.4G USB dongle (USB C), but not both simultaneously.
- 2) When you switch to Bluetooth(BT1, BT2, BT3), the indicator light flashes continuously until the connection is successful or stops after 2 minutes.
- 3) When you switch from Bluetooth to 2.4G, if the USB Dongle **cannot** be connected, the indicator light only flashes 3 times. At this time, you need to check whether the USB Dongle is plugged in USB port? If the USB is not plugged in, please plug it in.

**If you have plugged in, but cannot connect to the mouse, you need to re-pair the code via: Press and hold the 'Pair/mode' key, down for 3s, until the green indicator flashing, then, plug the USB Dongle in USB port of your computer. ( This is the method to repair the 2.4G USB dongle. )**

## 2. Install to Windows 10/11 OS Devices (Surface or any laptops Desktops PCs with Windows OS)

### (1) Keyboard install to Windows 10

- Press fn and 2 simultaneously once, and the indicator light flashes once, indicating that you have selected BT2.
- Press and hold the key **fn** and **2** down for 5s, until the indicator light continuously flashing.
- Turn on the "Bluetooth" on your Windows 10 OS ( **Settings**----**Devices**----**Bluetooth (On)** )----  
+**Add Bluetooth or other device**----**Bluetooth** (Mice keyboards, pens or audio and other kinds of Bluetooth devices )

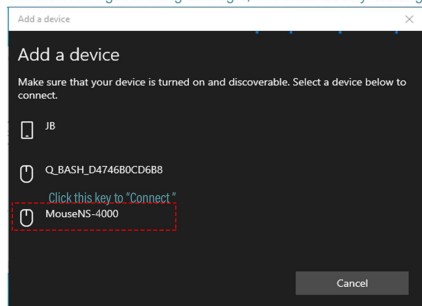


- Click "Keyboard NS-4000" to complete installation.

### (2) Mouse install to Windows 10

It likes to install in Macbook, when you first time connect the Bluetooth( It is default to connect by 2.4G USB Dongle ( Plug and Play ) ), you need to switch the mouse to Bluetooth channel ( BT1, BT2 or BT3 ).

- Switch to Bluetooth Connection: Press the Pair/mode Key to select BT2, then hold it down for 3s, the indicator light flashing blue light, and continuously flashing within 2 minutes.
- Turn on the "Bluetooth" on your Windows 10 OS ( **Settings**----**Devices**----**Bluetooth (On)** )---- +**Add Bluetooth or other device**----**Bluetooth** (Mice keyboards, pens or audio and other kinds of Bluetooth devices )
- It likes the keyboard to show the "Mouse NS-4000" in Bluetooth Listings. ( Left Image showed ) Just click "Mouse NS-4000" to complete installation.



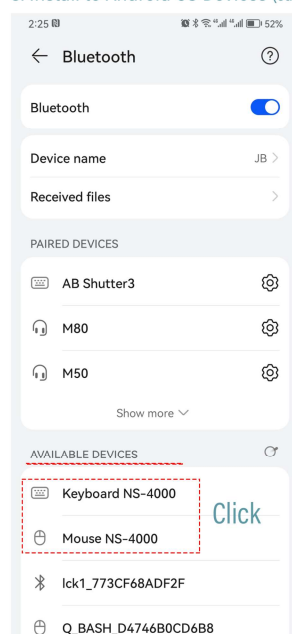
### ☆ Important Tips 3 :

- The 2.4G of this keyboard and mouse supports low version Wind., such as vista 8 / 7 /Sevice etc.
- Please notice: The low version of Windows OS may be not support Bluetooth 5.0 version, such as windows 7. So if your OS is windows 7, please use the 2.4G USB Dongle.
- The installation method for Windows 11 is as the same as Windows 10.

## 3. Install to Android OS Devices (such as Smart Phones, Tablets, TV Boxes and so on)

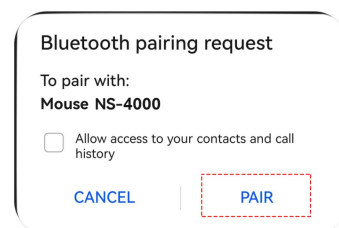
### (1) Keyboard install to Android OS smart phone

- Turn on Bluetooth ( **Settings**----> **Bluetooth**----> **On** )
- Press the key fn and 1 ( or 2, or 3 ) simultaneously once, and the indicator light flashes once, indicating you have selected the BT1 ( or BT2, or BT3).
- Press and hold the key fn and 1 ( or 2, or 3 ) down for 5s, until the indicator light continuously flashing.
- Click the "Keyboard NS-4000" in AVAILABLE DEVICES to pair the keyboard with your smart phone. ( e.g. left image )
- Click "PAIR" to complete.



### (2) Mouse install to Android OS smart phone

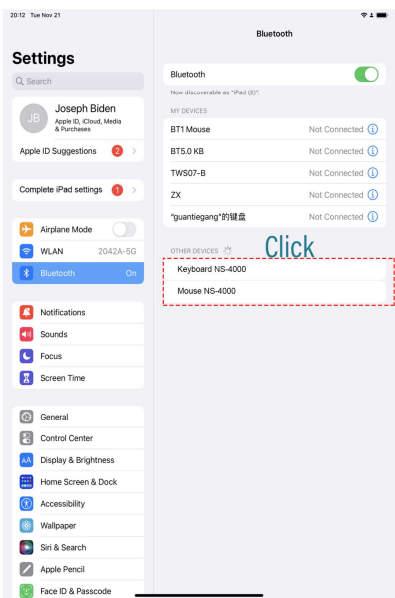
- Switch to Bluetooth Connection: Press and hold the 'Pair/mode' key to select BT3 and down for 3s, the indicator light continuously flashing within 2 minutes.
- Click the "Mouse NS-4000" in AVAILABLE DEVICES to pair the keyboard with your smart phone. (left image)
- Click "PAIR" to complete. (e.g. below image)



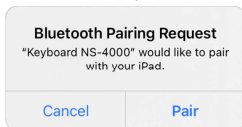
#### 4. Install to iOS Devices (such as iPads, iPhones)

##### (1) Keyboard install to iPad 11" pro ( It is the same way for other iPads and iPhones)

- Turn on Bluetooth ( **Settings**----**Bluetooth**----**On**)
- Press fn and 1 ( or 2, or 3 ) simultaneously once, and the indicator light flashes once, indicating that you have selected BT1 ( or BT2, or BT3 ).
- Press and hold the key fn and 1 ( or 2 ) down for 5s, until the indicator light continuously flashing.
- Click the " **Keyboard NS-4000** " in OTHER DEVICES to pair the keyboard with your iPad.

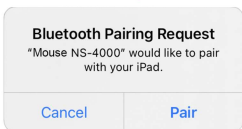


e) Click " Pair " to complete.



##### (2) Mouse install to iPad

- Switch to Bluetooth Connection: Press ' Pair/mode key to select BT1 and hold it down for 3s, the indicator light continuously flashing within 2 minutes.
- Click the " **Mouse NS-4000** " in OTHER DEVICES to pair the keyboard with your iPad. (left image)
- Click " Pair " to complete.



**Remark: Please remember to update the version of iOS on 13.0 above.**

#### How to input special symbols (United Kingdom)

This is depended on your operation system and input language. This user manual is default on Mac OS, macbook laptop.  
The input language: **British** (this is default language in macbook laptops.)

Symbols:	@	€	£	#
Input methods:	" shift " and " 2 "	" alt " and " 2 "	" shift " and " 3 "	" alt " and " 3 "

If you are using the input language is **British – PC**, the input key is changed too. Here is the examples:

Symbols:	"	#	£	@	€	\$
Input methods:	" shift " and " 2 "	" \ " above enter	" shift " and " 3 "	" shift " and " " "	" alt " and " 4 "	" shift " and " 4 "

So, this is the question of input language. The keyboard is no problem. Please select the correct input language for your keyboard.

#### USB C Adapter Introduction

The USB C interface is widely used in the new devices that produced after 2018, such as iPad Pro 11"/ 12.1" Macbook Air / Pro M1 series and so on. It also called type C or USB 3.1.

So, upgraded the interface of keyboard and mouse is necessary. This USB C Adapter is included in the package. Please notice !

It is easy to use. Just insert the USB A to this adapter, then, plug it in the USB C port.



**FCC Warning**

This device complies with part 15 of the FCC rules. Operation is subject to the following two conditions: (1) this device may not cause harmful interference, and (2) this device must accept any interference received, including interference that may cause undesired operation.

Changes or modifications not expressly approved by the party responsible for compliance could void the user's authority to operate the equipment.

NOTE: This equipment has been tested and found to comply with the limits for a Class B digital device, pursuant to part 15 of the FCC Rules. These limits are designed to provide reasonable protection against harmful interference in a residential installation. This equipment generates uses and can radiate radio frequency energy and, if not installed and used in accordance with the instructions, may cause harmful interference to radio communications. However, there is no guarantee that interference will not occur in a particular installation. If this equipment does cause harmful interference to radio or television reception, which can be determined by turning the equipment off and on, the user is encouraged to try to correct the interference by one or more of the following measures:

- Reorient or relocate the receiving antenna.
- Increase the separation between the equipment and receiver.
- Connect the equipment into an outlet on a circuit different from that to which the receiver is connected.
- Consult the dealer or an experienced radio/TV technician for help.

**Radiation Exposure Statement**

The device has been evaluated to meet general RF exposure requirement. The device can be used in portable exposure condition without restriction.