

Quick Start Guide

Specifications

Model: AMR110

Buttons: 4

Sensor Type: Optical

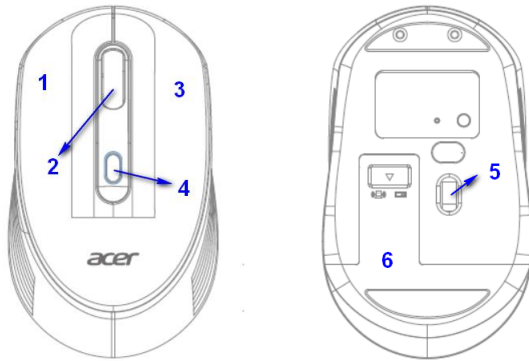
Dimensions (L x W x H): 108*64.5*35.9mm

Weight: 60g

Connector Type: USB

DPI: 1200(default) /1600/ 2000

Device Features



1. Left button
2. Scroll wheel
3. Right button

4. DPI button
5. Optical sensor
6. Battery cover

Keyboard Specifications

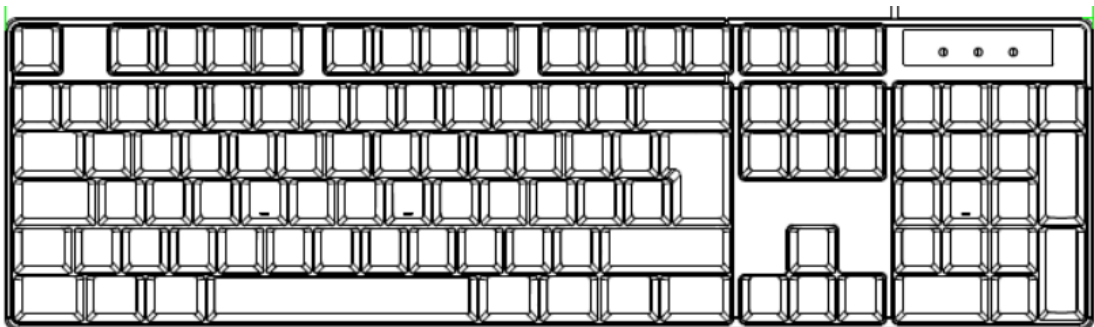
Model: AKW110

Connector Type: RF 2.4GHz

Dimensions (L x W x H): 431.65*123.96*27.47mm

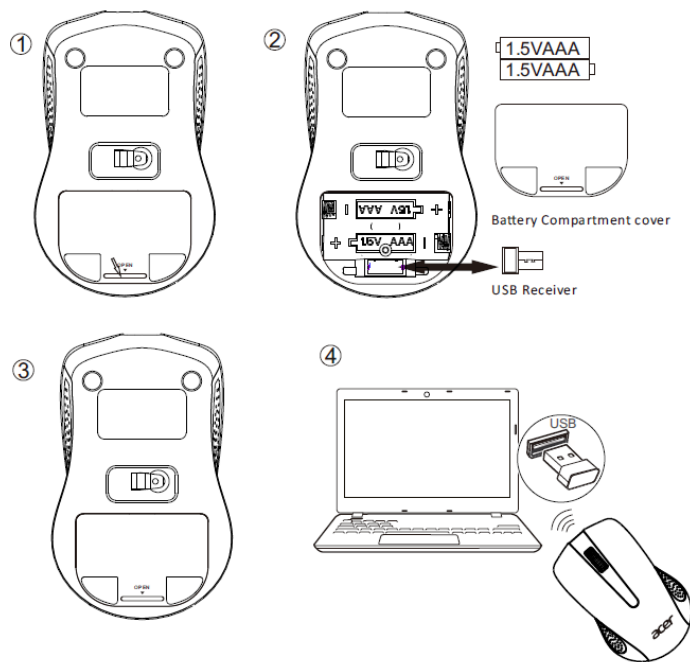
Weight: 60g

Device Features



* LED Indicator(Low Battery Warning)

How to Use



1. Please note that the receiver is placed in the packaging box, please take it out
 2. Insert AA batteries into the mouse & keyboard, then follow the steps as below.
 3. Replace the battery compartment cover.
 4. Plug the USB receiver into one of your computer's USB ports.
- Now you are ready to use the mouse.

Contents of the Box

- RF 2.4GHz Mouse x1
- RF 2.4GHz Keyboard x1
- AA Battery x2
- Quick Start Guide x1

Caution

- Do not disassemble the device or operate the device under abnormal conditions.
- Do not submerge the device in water.
- If the device could not be functional, or there was thermal abnormal situation, please re-plug into USB ports.
- If you still encounter problems after going through the corrective measures, please contact your dealer or an authorized service center for assistance.
- For more information regarding Acer accessories, please visit Acer website at www.acer.com.

Environment

Temperature:

- Operating: 0 °C to 40 °C
- Non-operating: -10 °C to 60 °C

Humidity (non-condensing):

- Operating: 10% to 90%
- Non-operating: 10% to 90%

FCC STATEMENT

1. This device complies with Part 15 of the FCC Rules. Operation is subject to the following two conditions:

- (1) This device may not cause harmful interference, and
- (2) This device must accept any interference received, including interference that may cause undesired operation.

2. Changes or modifications not expressly approved by the party responsible for compliance could void the user's authority to operate the equipment.

NOTE: This equipment has been tested and found to comply with the limits for a Class B digital device, pursuant to Part 15 of the FCC Rules. These limits are designed to provide reasonable protection against harmful interference in a residential installation.

This equipment generates uses and can radiate radio frequency energy and, if not installed and used in accordance with the instructions, may cause harmful interference to radio communications. However, there is no guarantee that interference will not occur in a particular installation. If this equipment does cause harmful interference to radio or television reception, which can be determined by turning the equipment off and on, the user is encouraged to try to correct the interference by one or more of the following measures:

Reorient or relocate the receiving antenna.

Increase the separation between the equipment and receiver.

Connect the equipment into an outlet on a circuit different from that to which the receiver is connected.

Consult the dealer or an experienced radio/TV technician for help.

Manufacturer address

8F, No. 88, Sec. 1, Xintai 5th Rd., Xizhi Dist., New Taipei City 221, Taiwan

Please visit www.acer.com for warranty.