

# Studio Pro+ Wireless Headset User Manual 2AHYV-SPPLUS

## Manualsum, simplified manuals

### Table of Contents

- [Studio Pro+ Headphones QSG Quick Start Guide](#)
  - [PAIR UP](#)
  - [GET CHARGED](#)
  - [GO AHEAD, PRESS THE BUTTON](#)
  - [BLUETOOTH MULTIPOINT \(Connect 2 devices simultaneously\)](#)
  - [SHARE MODE \(Share between two Studio Pro+ headphones\)](#)

## **Studio Pro+ Headphones QSG Quick Start Guide**

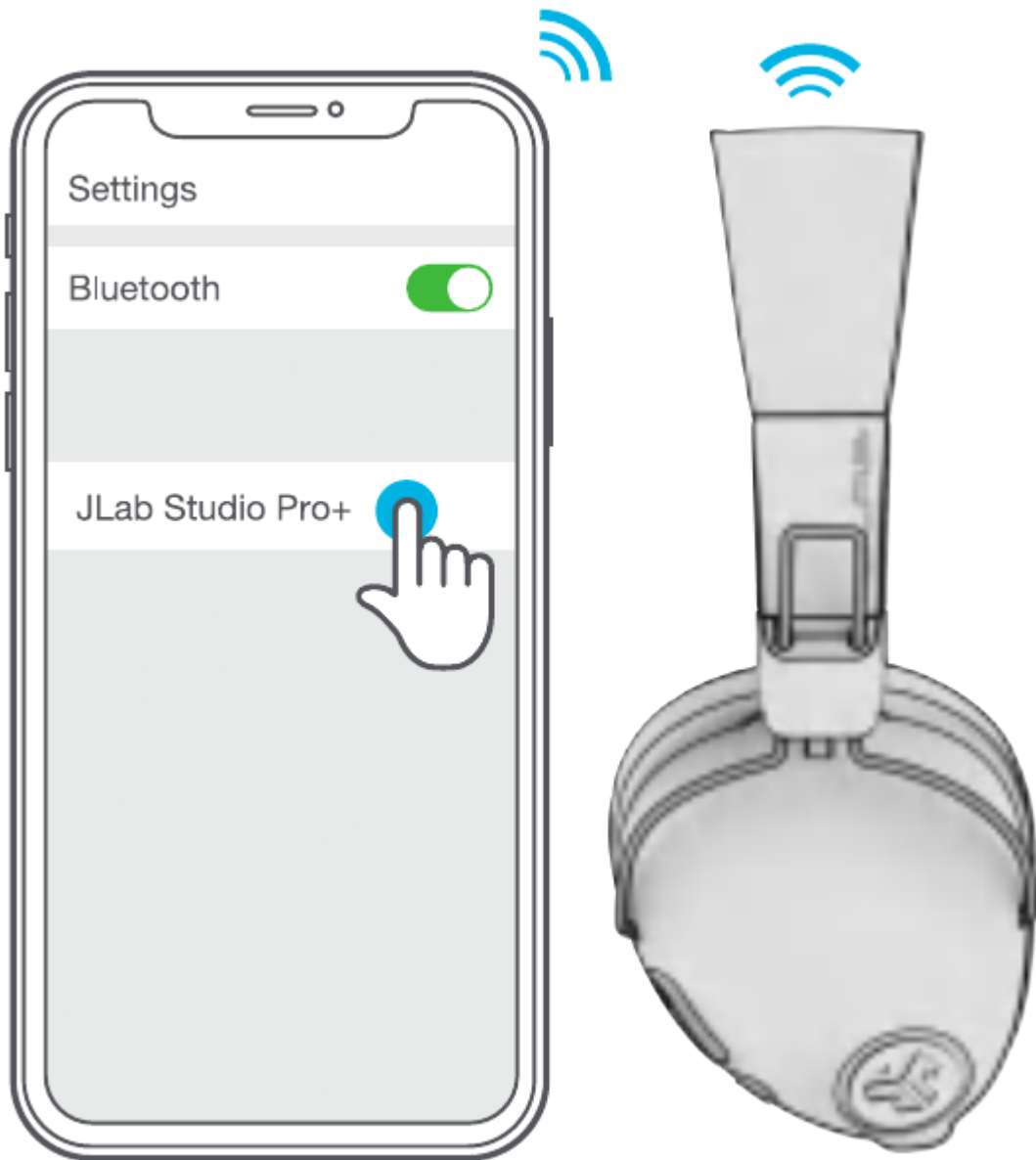
(2AHYV-SPPLUS)

### **PAIR UP**

Press hold button for 8 seconds. Release. Light will flash blue/red.

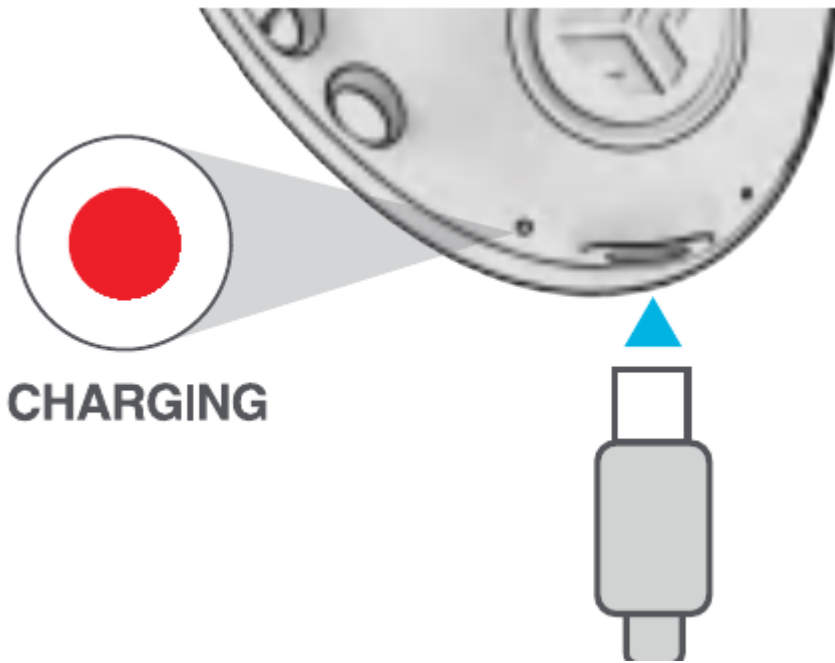


Select JLab Studio Pro+ in your device settings to connect.

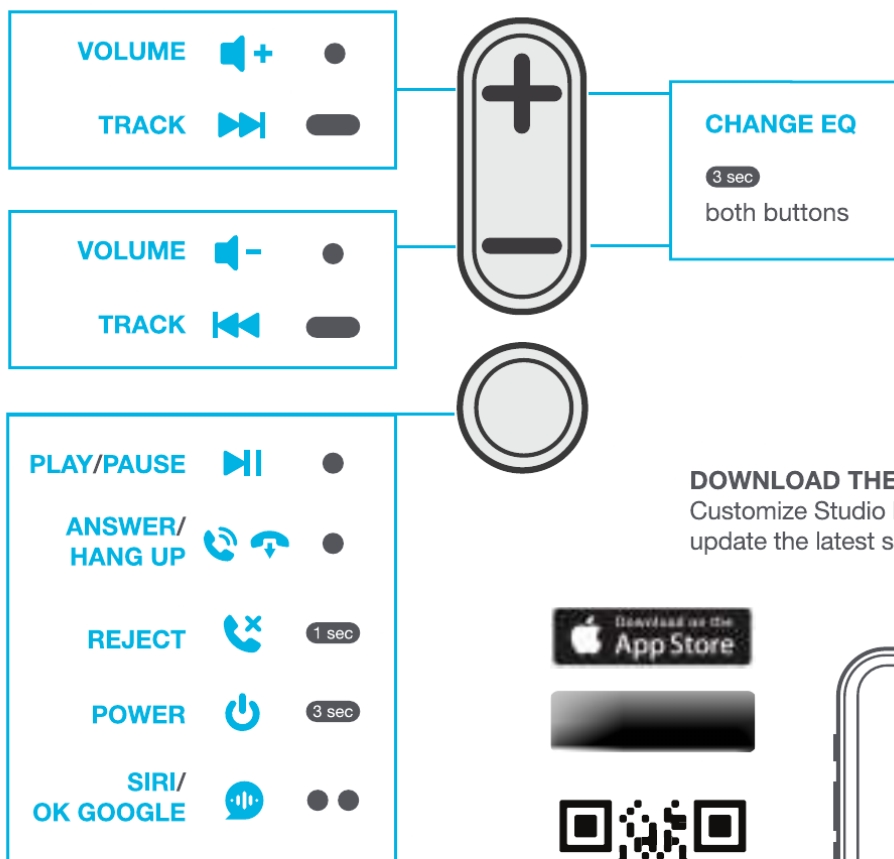


## GET CHARGED

Connect to a computer or USB 5V output device.



## GO AHEAD, PRESS THE BUTTON



**DOWNLOAD THE MOBILE APP**  
 Customize Studio Pro+ features and update the latest software.

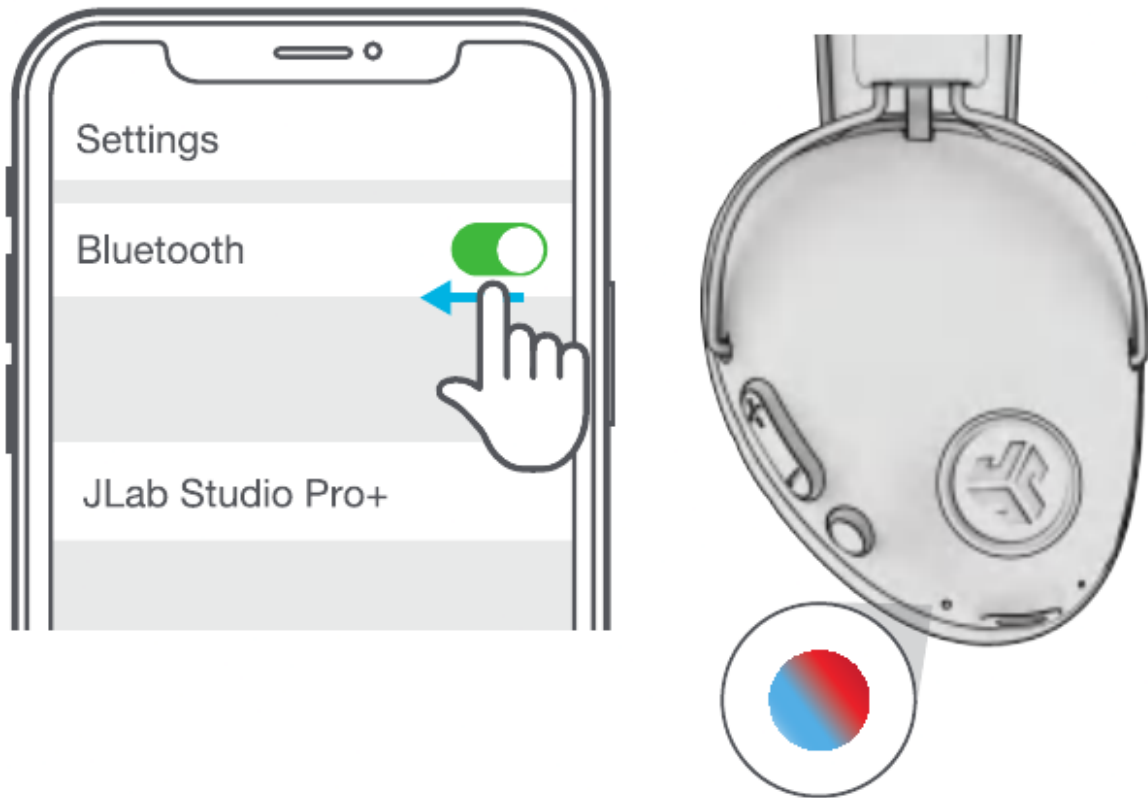


SCAN ME



## BLUETOOTH MULTIPOINT (Connect 2 devices simultaneously)

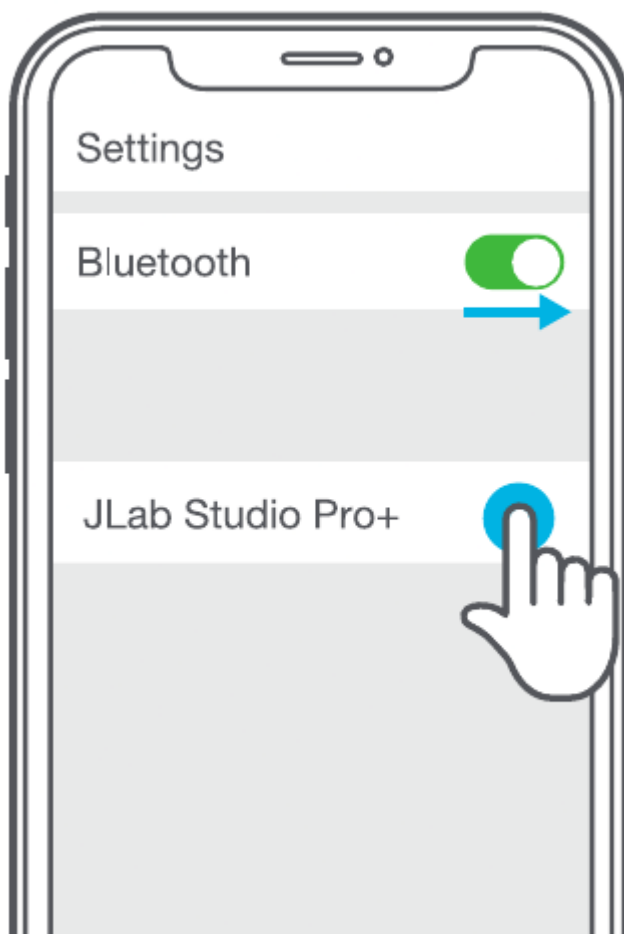
1. Once FIRST device is connected, turn off Bluetooth in device settings. Studio Pro+ will auto enter Bluetooth Pairing.



2. Enter your SECOND device Bluetooth settings and connect to Studio Pro+.

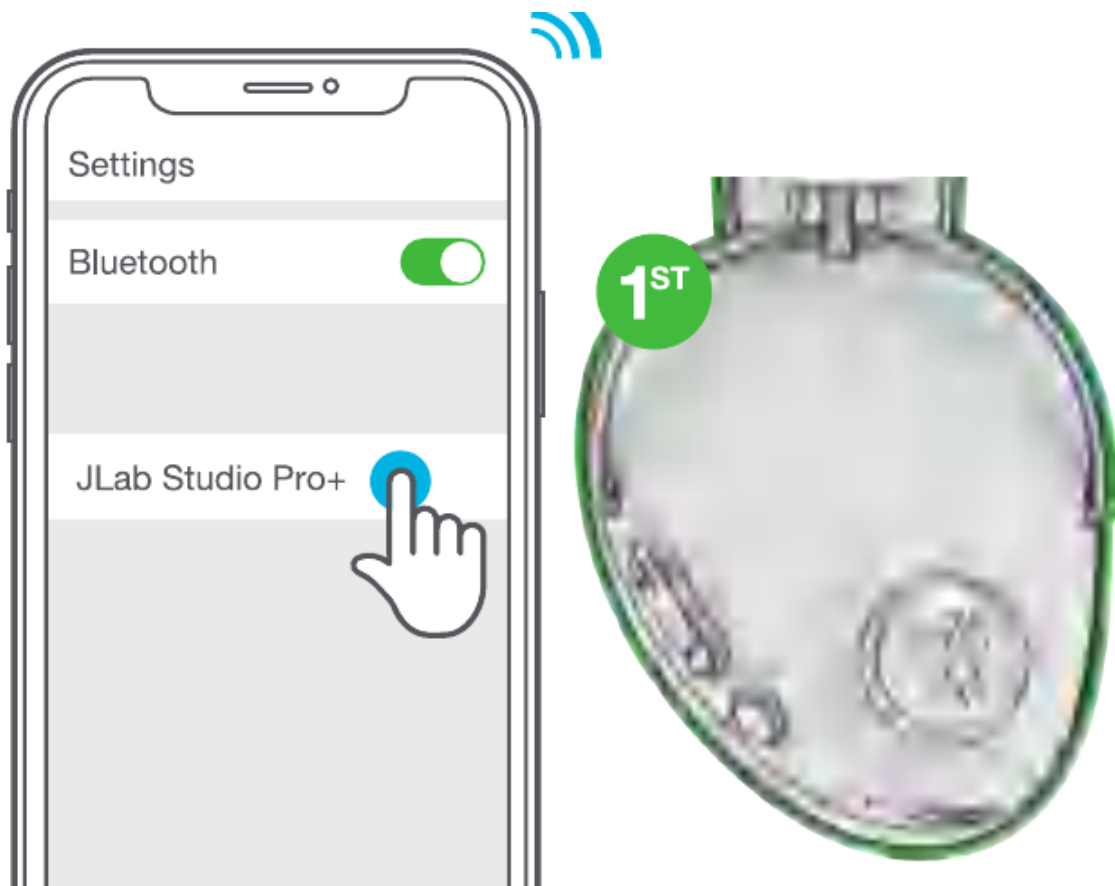


3. Enter your FIRST device settings. Turn on Bluetooth and reconnect to Studio Pro+.



# SHARE MODE (Share between two Studio Pro+ headphones)

1. Connect FIRST headphone to device.



2. SECOND headphone should be powered off. Press hold until flashing blue/red.

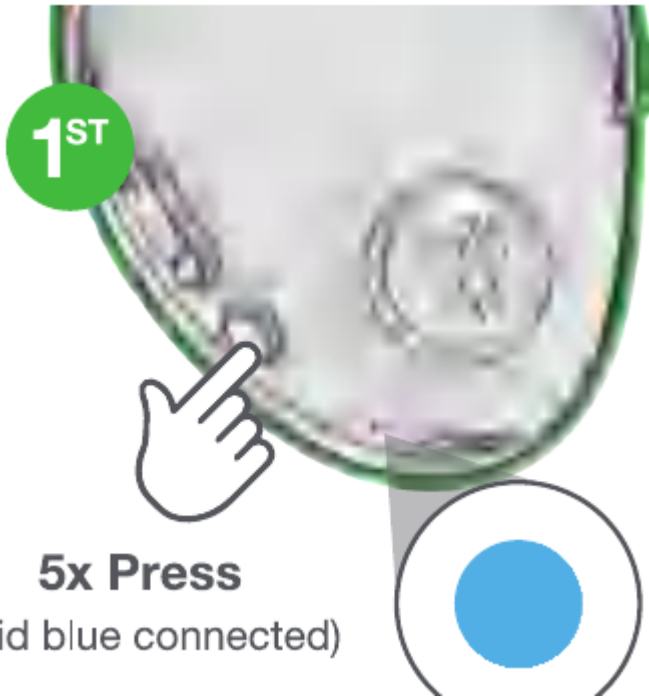


3. Then 5x Press and blinks blue



4. FIRST headphone 5x Press to share.





1<sup>ST</sup>

**5x Press**

(Solid blue connected)