

# [Powerstick.com ACTIVO](#) [Portable Speaker User](#) [Manual](#)

**[Manualsum](#), simplified manuals**

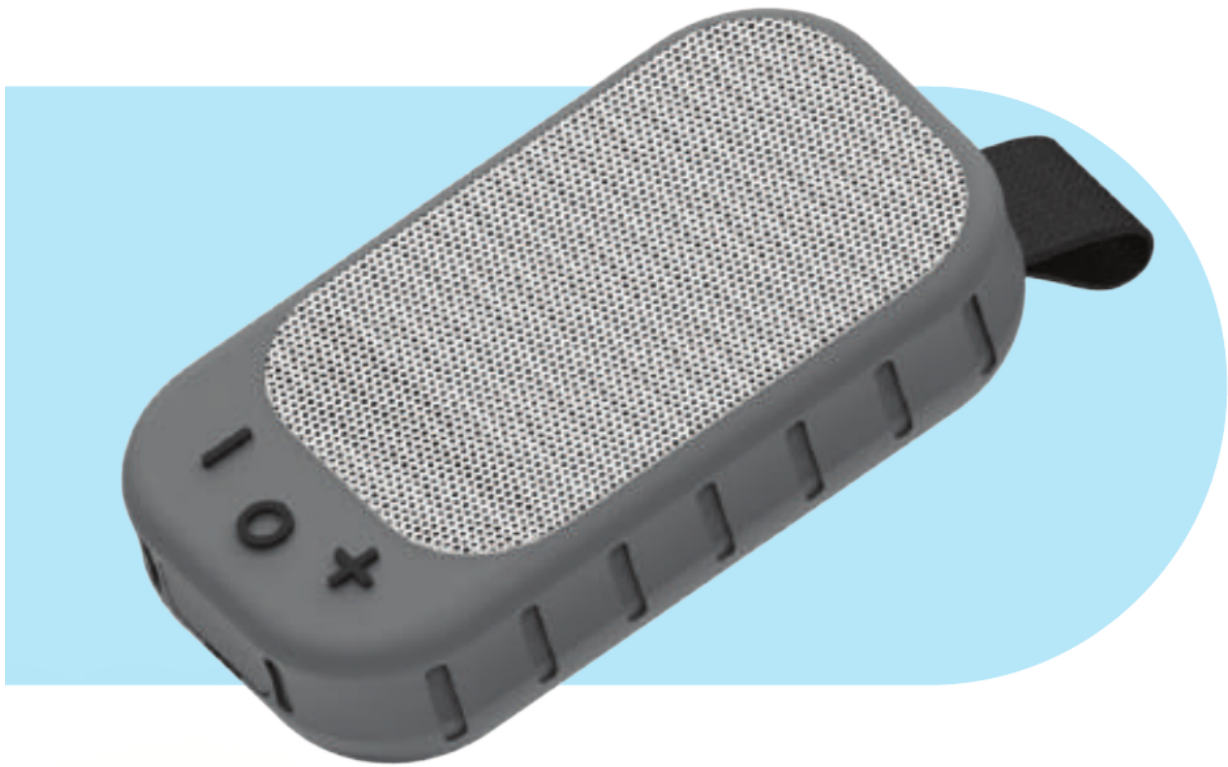
Table of Contents

- [Powerstick.com ACTIVO Portable Speaker User Manual](#)
  - [What is Activo?](#)
  - [Built-in Magnets](#)
  - [Technical Specs](#)
  - [Activo Controls](#)
  - [Charging Activo](#)
  - [Pairing your Activo](#)

## **Powerstick.com ACTIVO Portable Speaker User Manual**

Powerstick.com ACTIVO Portable Speaker User Manual

FCC id: [2AITN-ACTIVO](#)





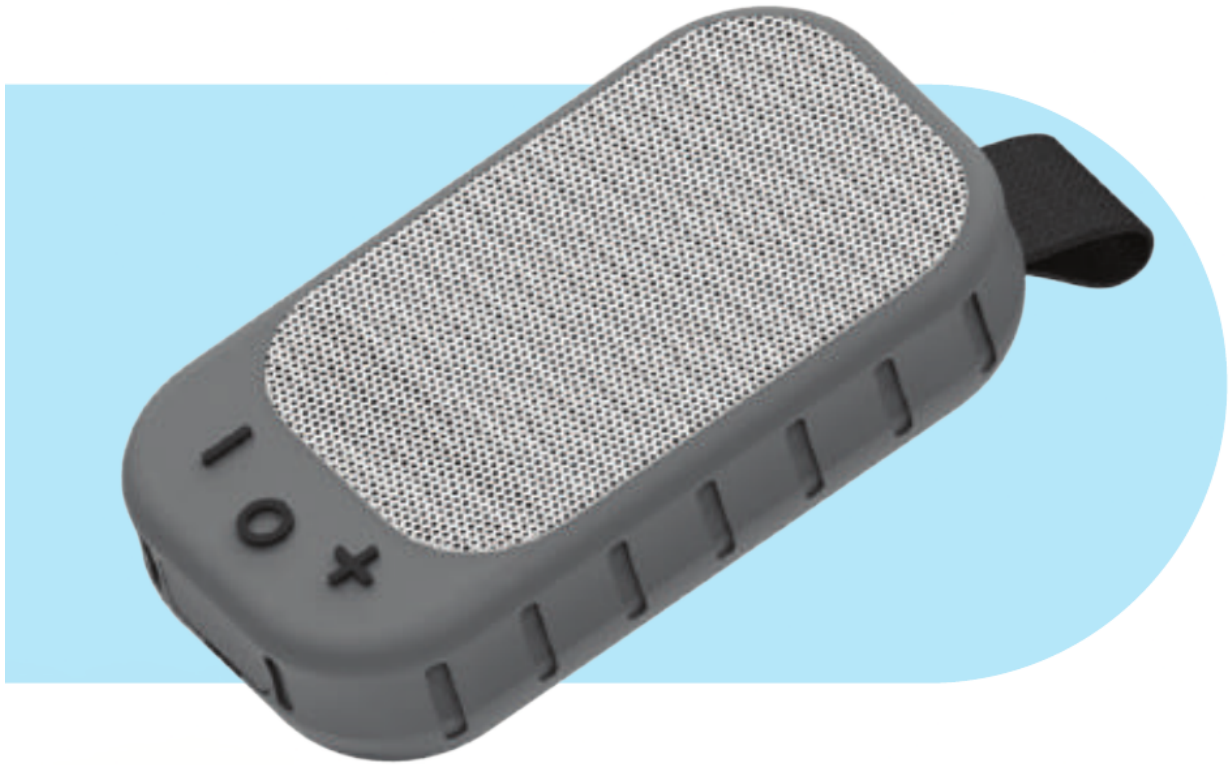
[Powerstick.com](https://www.powerstick.com)

## What is Activo?

Activo is a portable Bluetooth® 5-watt speaker that was designed to go on all your adventures with you.

It features a passive radiator for strong bass, IPX6 water resistancy, shockproof rubberized silicone outer, and has built-in magnets to attach to metallic objects. The robust strap also allows you to attach Activo to a carabiner to be easily accessible while on your treks.

[Manualsum](#)



## **Built-in Magnets**

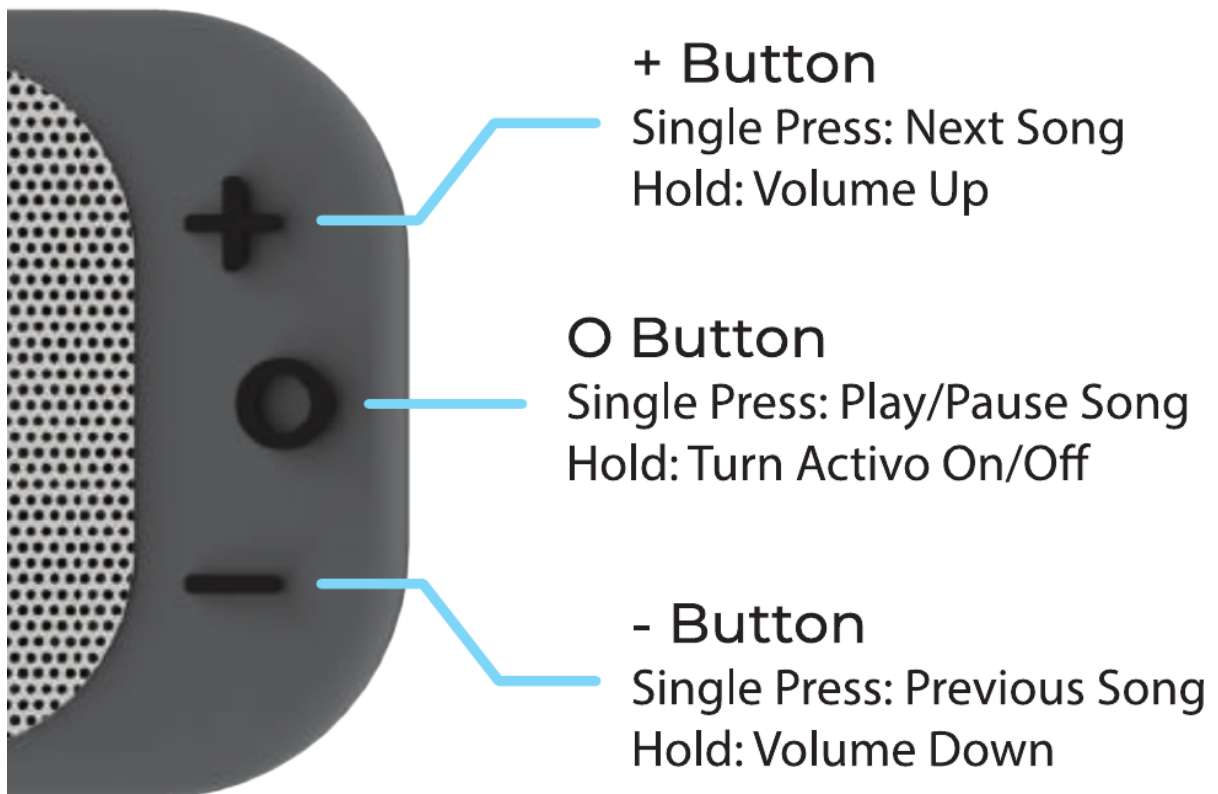
Activo has magnets built into the bottom underneath the silicone outer. You can stick Activo to metallic surfaces such as your fridge, the hood of your car, etc.



## Technical Specs

- **Battery Capacity:** 600mAh
- **Input:** 5V/400mA
- **Speaker Wattage:** 5-watts
- **Bluetooth range:** approx. 30 ft
- **Playtime:** 6+ hours
- **Water Resistancy Rating:** IPX6

## Activo Controls



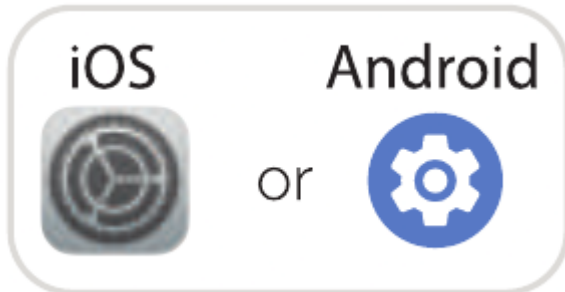
## Charging Activo

Activo is built to be water-resistant and the charging port is hidden behind a water-tight silicone plug. Use your finger to pull out the plug. Plug in the included USB-C charging cable into Activo and the USB-A side to a suitable power source. Always make sure plug is securely re-inserted after charging to maintain water resistancy.



## Pairing your Activo

1. Press and hold the O button on Activo to turn it on. You will hear a tone. The Indicator Light will begin flashing red and blue. You are now in Pairing Mode.
2. Go to your phone/device Settings. Find your Bluetooth settings. (**Note:** if you are having trouble, please refer to your devices support manual.)



3. You should see Activo listed in the list of nearby Bluetooth devices. If you do not see Activo, make sure that you are in Pairing Mode (Indicator Light will flash red and blue just under the O button).
4. Tap on the device named Activo to pair by Bluetooth. Once paired, you will hear a notification indicating a successful pairing and the Indicator Light will flash green.
5. Go ahead and play your favorite tunes on Activo!
6. When you're done enjoying your music, press and hold the O button until it turns off.

(**Note:** to pair Activo with another device, you must first disconnect any devices currently paired by either: 1) turning off the first devices Bluetooth, 2) forgetting Activo as a paired device, or 3) not having the paired device within range.)