

# [iHome iBT32 Clock Radio with Color Changing Light User Manual](#)

## [Manualsum](#), simplified manuals

### Table of Contents

- [iHome iBT32 Clock Radio with Color Changing Light User Manual](#)
  - [What's Included:](#)
  - [Controls Overview](#)
  - [Setting Up the Unit](#)
  - [The Display](#)
  - [Setting the Clock](#)
  - [Setting the Alarms](#)
  - [Previewing the Alarm and Turning the Alarm On/Off](#)
  - [Light Mode](#)
  - [Snooze/Display Dimmer](#)
  - [Sleep Mode](#)
  - [Pairing Your Bluetooth® Device](#)
  - [Charging Devices Via USB-C Port](#)
  - [Replacing and Installing Clock Backup Battery](#)
  - [Maintenance](#)
  - [IMPORTANT SAFETY INSTRUCTIONS](#)

# **iHome iBT32 Clock Radio with Color Changing Light User Manual**

iHome iBT32 Clock Radio with Color Changing Light User Manual

SDI Technologies BLUETOOTH COLOR CHANGING USB CHARGING & FM  
CLOCK RADIO User Manual

FCC id: [EMOIBT32A](#)

COLOR CHANGING + USB CHARGING + FM CLOCK RADIO

[Manualsum](#)



Model: iBT32

# iHome

## **What's Included:**

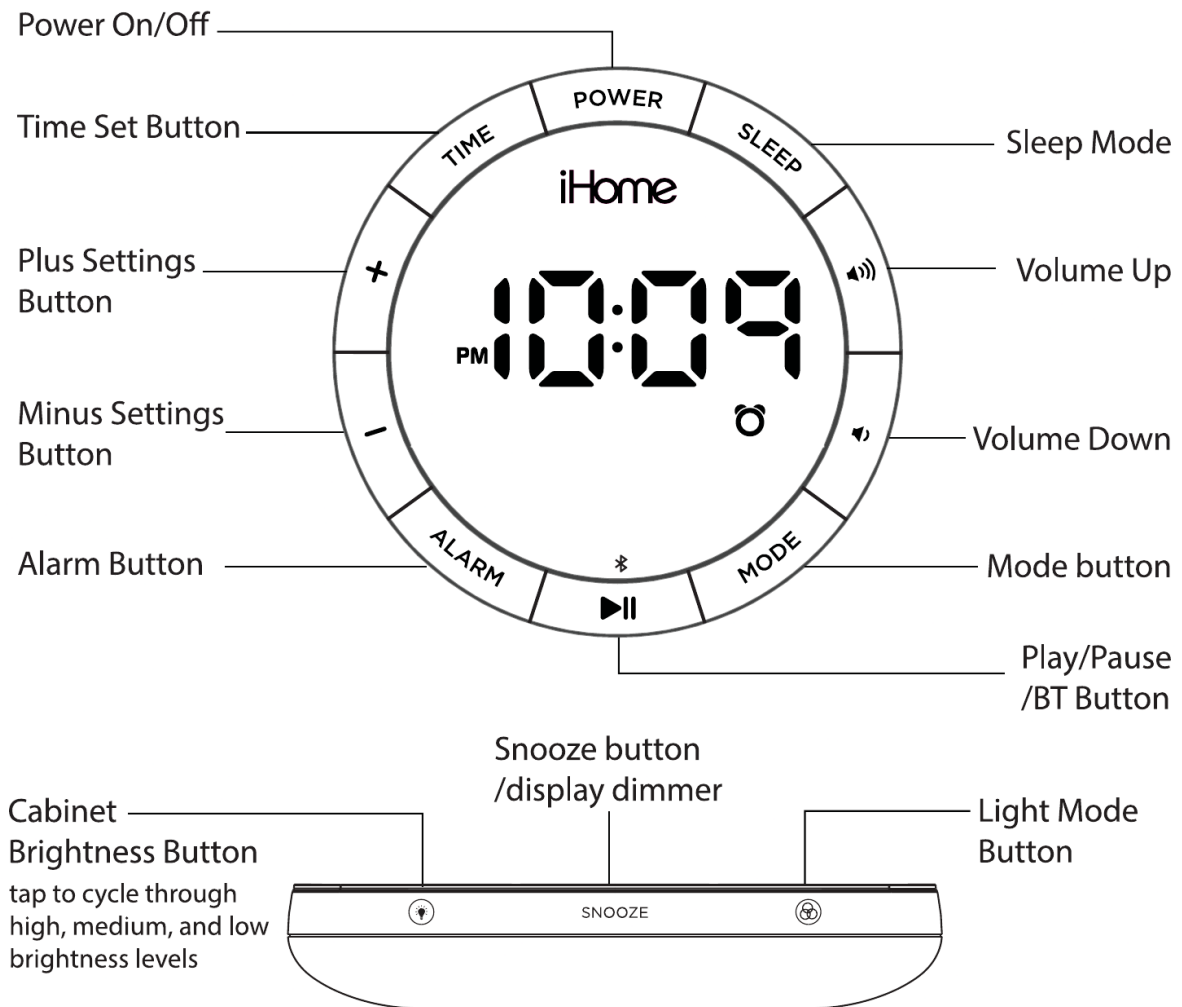
iBT32 unit

[Manualsum](#)



Power Adaptor and Charging Cable

# Controls Overview

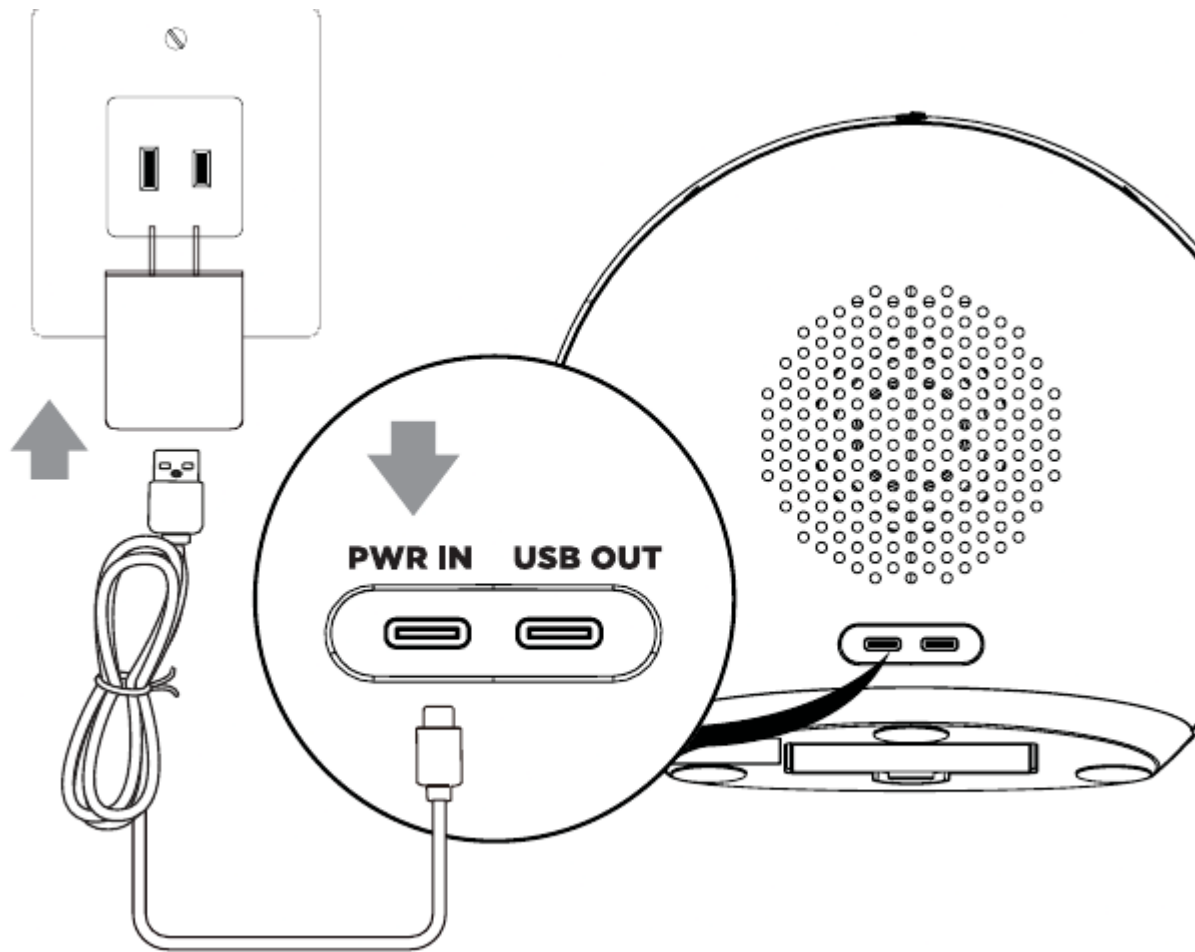


## Setting Up the Unit

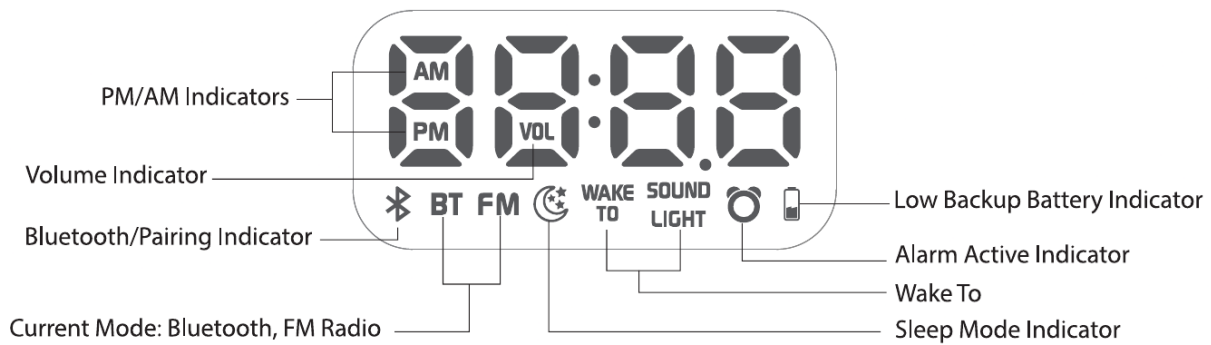
This unit operates on AC power using the included 100V-240V universal AC adaptor. Place unit on a table surface. Plug the power

adaptor into the PWR IN jack on back of the unit and the other end | into a working wall socket (If the AC socket is controlled by a switch please be sure the switch is on).

The time will appear on the display and the iBT32 is now ready for use.



## The Display



## Setting the Clock

Bluetooth Time Sync is enabled by default. Once the iBT32 is paired to your device the time will set automatically. To disable BT time sync to set time manually, please follow the steps below:

### **To turn off BT time sync:**

- Press and hold the Time Set Button for 5 seconds until the display shows "OFF" and a beep tone sounds.

### **To turn on BT time sync:**

- Press and hold the Time Set Button for 5 seconds until the display shows "ON" and a beep tone sounds.

### **To manually set the clock:**

1. Press and hold the Time Set Button for 2 seconds to enter Time set process. Display flashes 12hr or 24hr. Press + or - Button to select between 12hr or 24hr time format. Press Time Set button to confirm your selection.
2. The Hour on the display flashes. Press + or - Button to adjust the hour. Press Time Set Button to confirm
3. The Minute on the display flashes. Press + or - Button to adjust the minute. Press Time Set Button to confirm and exit the process.

## **Setting the Alarms**

This unit provides alarm function which can be set to different time and alarm sources.

1. Press and hold the Alarm Button for 2 seconds until the Hour and Alarm Icon flash. A beep tone sounds.
2. Press the + or - Buttons to adjust the alarm hour. Make sure you set the correct AM or PM time if it is 12 Hou time format. Press Alarm button to confirm.
3. Press the + or - Buttons to adjust the alarm minute. Press Alarm button to confirm.
4. The VOL icon and blinking volume level are displayed. Press the + or - Buttons to adjust the desired alar volume (Alarm has a minimum volume level of 2) Press the Alarm Button to confirm the alarm Volum setting.
5. Press the + or - Buttons to select the desired wake-to alarm sources:
  - Wake light only
  - Alarm Tone 1 + Light
  - Alarm Tone 1
  - Alarm Tone 2 + Light
  - Alarm Tone 2
  - Alarm Tone 3 + Light
  - Alarm Tone 3
  - Alarm Tone 4 + Light
  - Alarm Tone 4
  - BT + Light
  - BT
  - FM + Light
  - FM

6. Press alarm Set Button to confirm and exit the process.

## Previewing the Alarm and Turning the Alarm On/Off

Single Press the Alarm Button to preview and arm the alarm. The alarm icon will appear on the display. Single press th | alarm button again to disarm the alarm.

## Light Mode

Quick tap and release the Light Mode Button as needed to cycle to the desired color mode light setting.

L01-Rainbow Rotate(default) L02-White/Nightlight L03-Red L04-Blue L05-Green

L06-Purple => L07-Yellow/green => L08-Light Blue => L09-Pink/Purple Fade => L10-Blue/Green Fade

L11-Orange/Yellow/Green Fade L12-Fade Cycle L00-None/Off

### Note:

1. Light modes are numbered L0-L12 and shown on the LED display area for 2 sec after changing, or when turned ON.
2. To change cabinet brightness tap the Cabinet Brightness Button to cycle through high medium and low brightness levels.

## Snooze/Display Dimmer

**Snooze:** When the alarm is sounding, press the Snooze/Display Dimmer button to snooze for 9 minutes.

**Dimmer:** Press the Snooze/Display Dimmer button (when alarm is NOT sounding) to adjust display brightness. There are 5 levels of brightness for the display: 0 (off) and then 1 (low) through 4 (Hi)

## Sleep Mode

This unit allows you to sleep to the current sound source for a set time before turning the unit off.

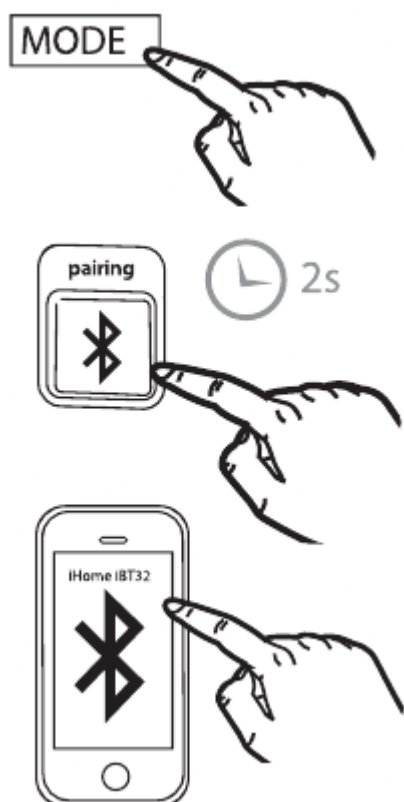
1. To set Sleep time, press and release the Sleep Button as needed to cycle to the desired sleep duration: 120, 90, 60, 30 or 15 minutes or OFF (turns the unit off). The sleep icon will appear on the display.
2. Press the [volume down button] or [volume up button] Buttons to adjust the sleep volume on the unit. Note that the sleep volume setting is stored separately from other volume settings. When Sleep mode is

[Manualsum](#)

active, press and release the Sleep Button to display remaining sleep time.

## Pairing Your Bluetooth® Device

Pairing is the set-up process to introduce your Bluetooth-capable device to the iBT32. Once your device is paired the iBT32 can recognize it and you can play your audio through it.



1. Turn on your Bluetooth device and make it “discoverable” by turning on Bluetooth mode (check in Option or Settings).
2. Press and release the Mode Button until the “BT” indicator icon appears on the display.
3. Press and hold the Bluetooth Pairing Button located in the front of the unit for 2 seconds. The iBT32 cabinet will flash blue, the Bluetooth icon will flash on the display, indicating the iBT32 is in pairing mode.
4. “iHome iBT32” should appear in your device’s Bluetooth menu. Select “iHome iBT32” to connect it. If prompted for a passcode, enter “1234” on your device.

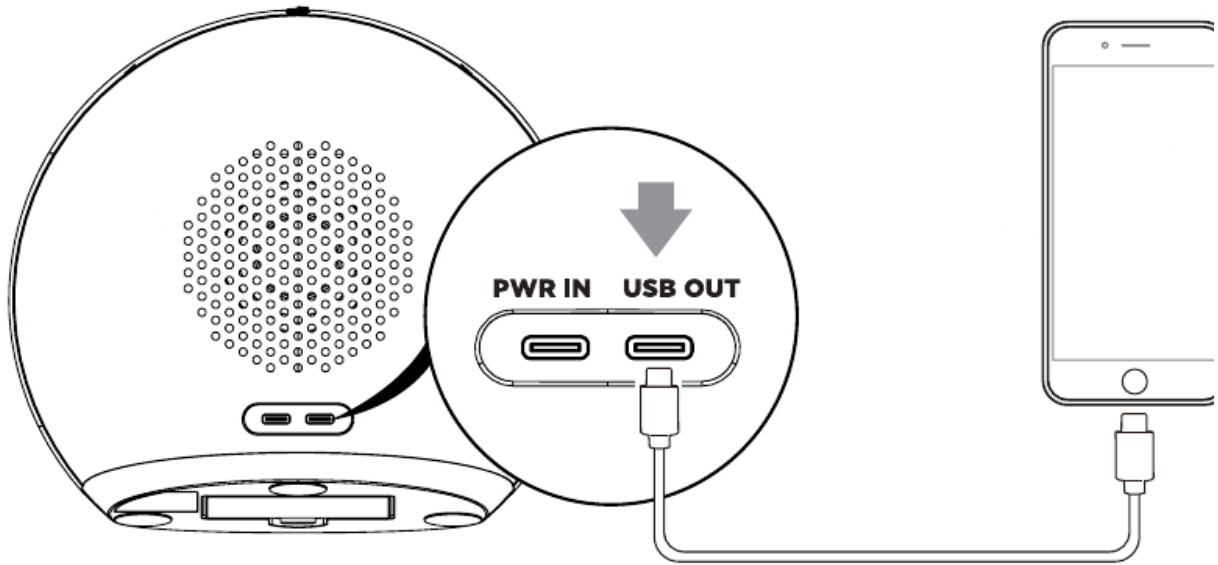
5. When pairing is successful, a voice prompt will announce “CONNECTED”, the Bluetooth icon will appear solid, cabinet lights will flash blue two times, indicating the iBT32 is ready to play music. There should also be an indication on your device. Once the iBT32 is paired to a device, when powered on and in Bluetooth mode, will attempt to autolink when the device is within range. To reset Bluetooth, press and hold the Bluetooth Pairing Button for 10 seconds.

## Charging Devices Via USB-C Port

Connect the standard end of a USB-C cable (not included) to the USB-C Port on the back of the unit, and connect the other end to the charging port on your device.

Monitor the charging on your device. Some devices use a proprietary charging method and will not charge using the USB-C port. If this happens, you must charge your device using the charger that came with it.

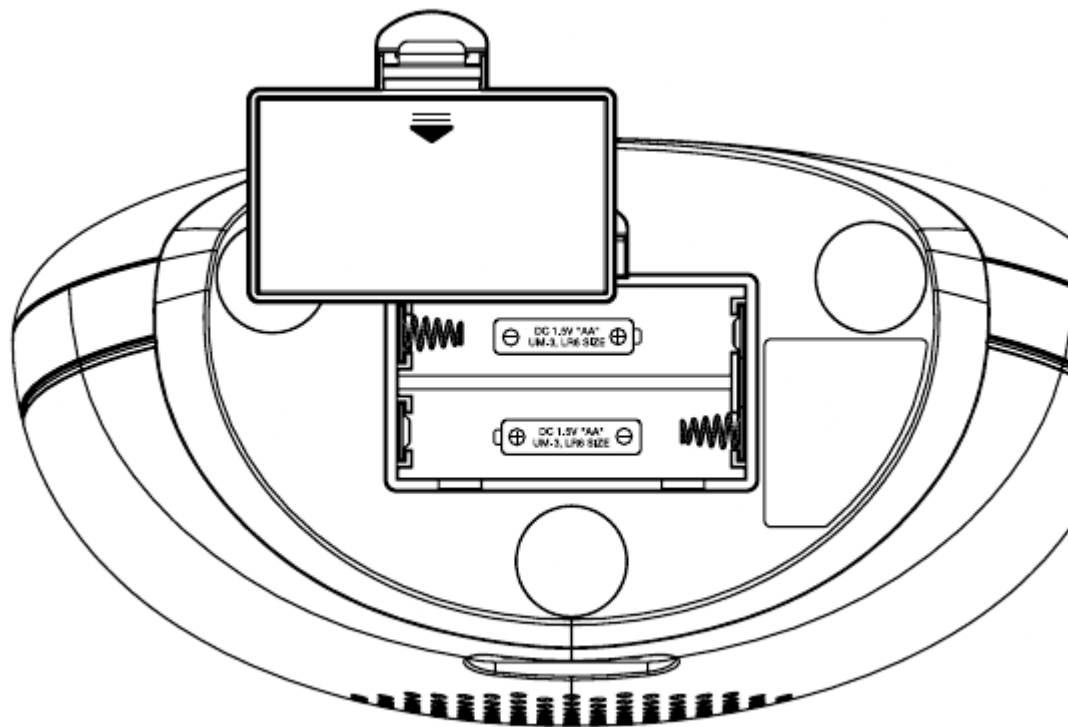




**Note:** Unit must be plugged into working outlet in order to charge devices.

## Replacing and Installing Clock Backup Battery

The unit uses two AA back-up battery(not included) to provide continuous alarm operation and clock settings in the event of a temporary power failure. When the battery icon on the clock display is flashing, it is time to replace the back-up battery. The battery compartment is



located on the bottom of the unit.

1. Press in and push down on the battery door to open and remove the battery door.
2. Install 2 new "AA" batteries, matching the (+/-) markings in the battery compartment.
3. Replace the door.

## **Maintenance**

- Remove plastic protective film from the clock display.
- Place the unit on a level surface away from sources of direct sunlight or excessive heat.
- Protect your furniture when placing your unit on a natural wood and lacquered finish. A cloth or other protective material should be placed between it and the furniture.
- Clean your unit with a soft cloth moistened only with mild soap and water. Stronger cleaning agents such as thinner or similar materials can damage the surface of the unit.

## **IMPORTANT SAFETY INSTRUCTIONS**

Please heed all warnings, read and follow all instructions and keep these instructions handy for future reference

1. Do not use this product near water.
2. Do not block any ventilation openings. Install in accordance with the manufacturer's instructions.
3. Heat - This product should be situated away from heat sources such as radiators, heat registers, stoves or other appliances (including amplifiers) that produce heat.
4. Only use attachments/accessories specified by the manufacturer.
5. Unplug this product during lightning storms or when unused for long periods of time.

6. Damage Requiring Service — This product should be serviced by qualified service personnel when:
  - Plug has been damaged.
  - Objects have fallen into or liquid has been spilled into the enclosure.
  - The unit has been exposed to rain. The unit has been dropped or the enclosure damaged.
  - The unit exhibits a marked change in performance or does not operate normally.
7. No naked flame sources, such as lighted candles, should be placed on this product.
8. Attention should be drawn to the environmental aspects of battery disposal.
9. This product is suitable for use in tropical and/or moderate climates.
10. WARNING: To reduce the risk of fire or electric shock, do not expose this product to rain or moisture.
11. Do not dispose of batteries in the household trash or fire.
12. The mains plug of power adaptor is used as the disconnect device, it shall remain readily operable.

iHome iBT32 Clock Radio with Color Changing Light User Manual