

# ShenZhen Ankbit Electronics Limited 2A6ET- RT7200 Outdoor Multifunctional Lighting Speakers User Manual

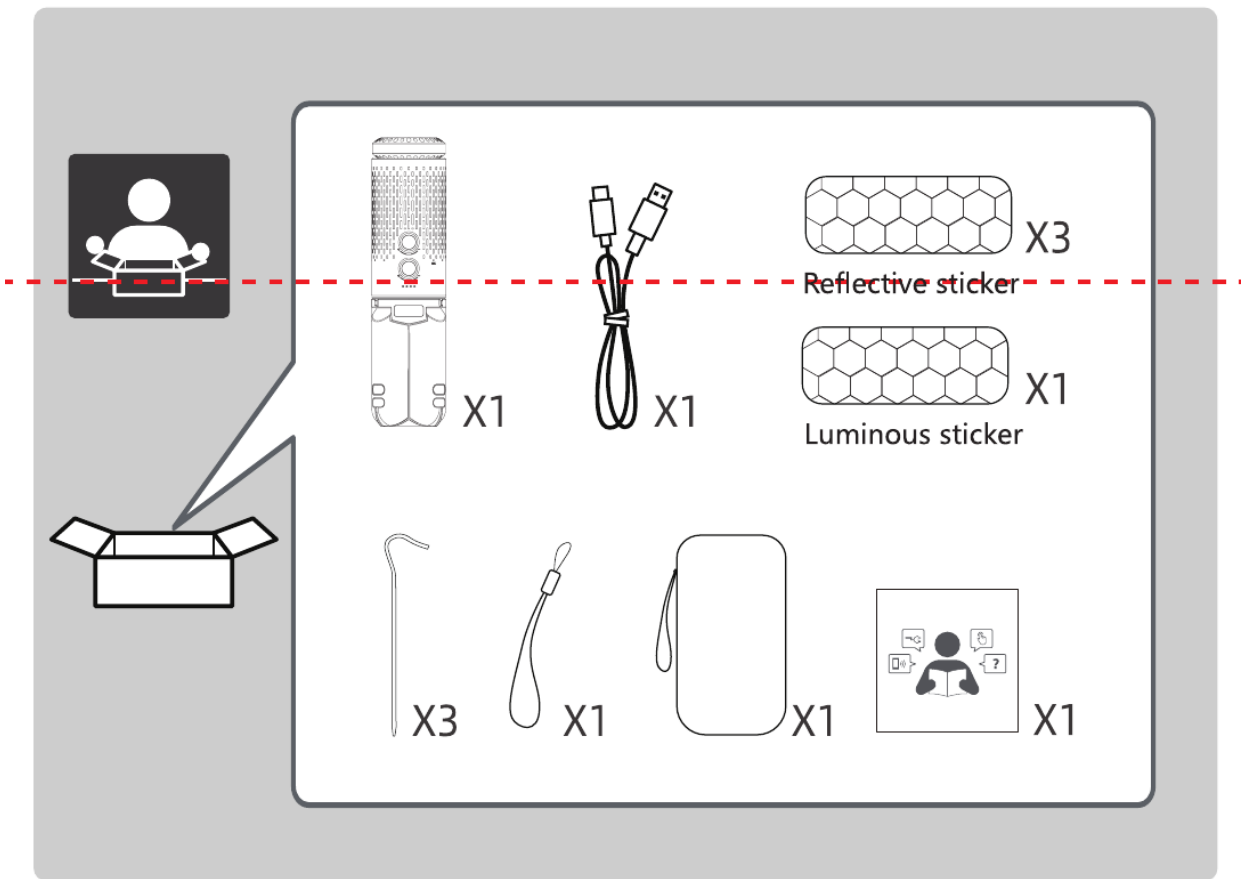
[Manualsum](#), simplified manuals

Table of Contents

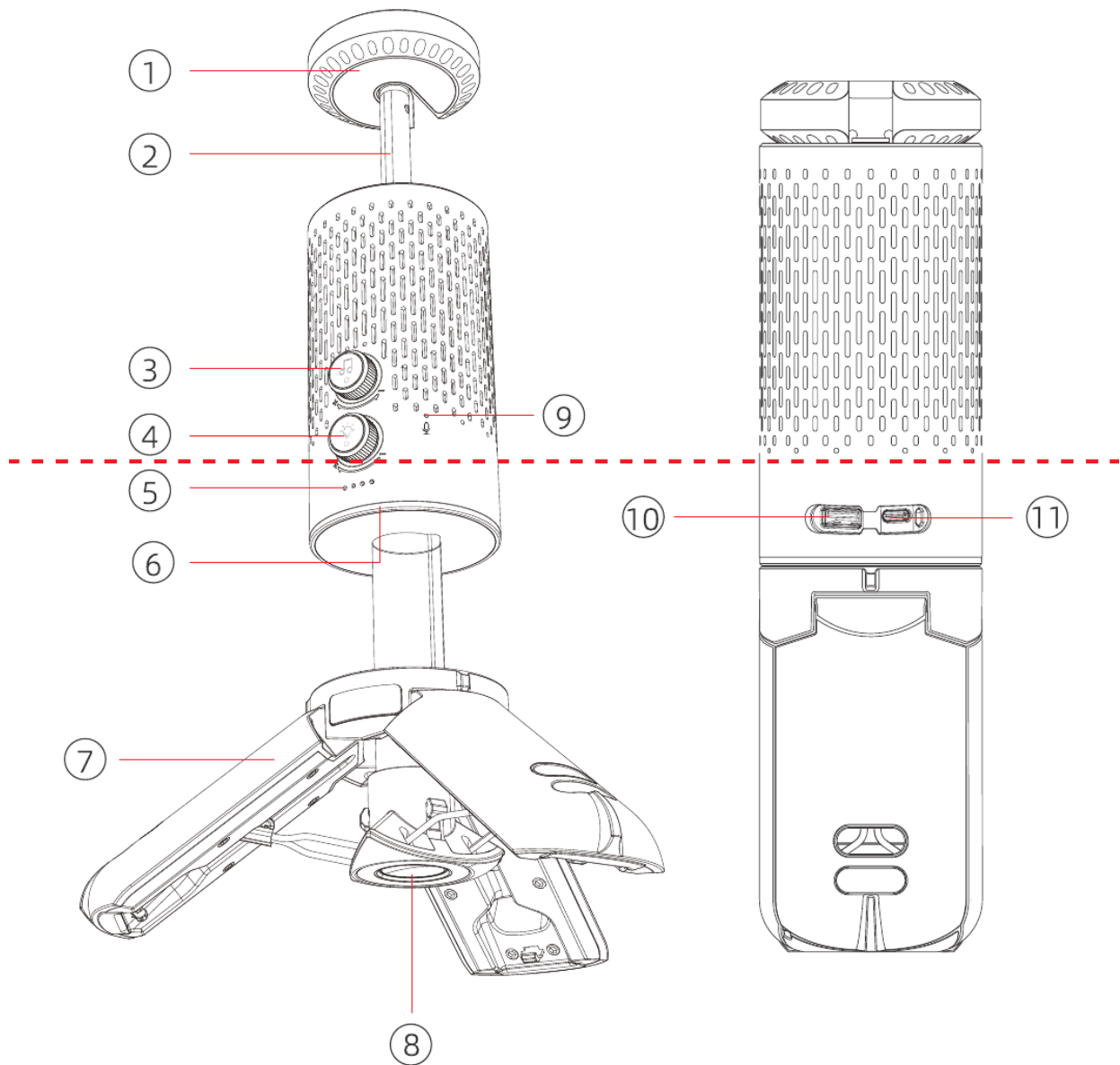
- [Outdoor Multifunctional Lighting Speakers User Manual](#)
  - [Model:R7](#)
  - [Product overview](#)
  - [Power on/off](#)
  - [Pairing](#)
  - [TWS Pairing](#)
  - [Key Operation](#)
  - [Power off/on ambient light](#)
  - [Clear Pairing](#)
  - [Reset](#)
  - [Power Display](#)
  - [Battery Indicator](#)
  - [Warranty](#)
  - [Disposal](#)

## Outdoor Multifunctional Lighting Speakers User Manual

**Model:R7**



## Product overview

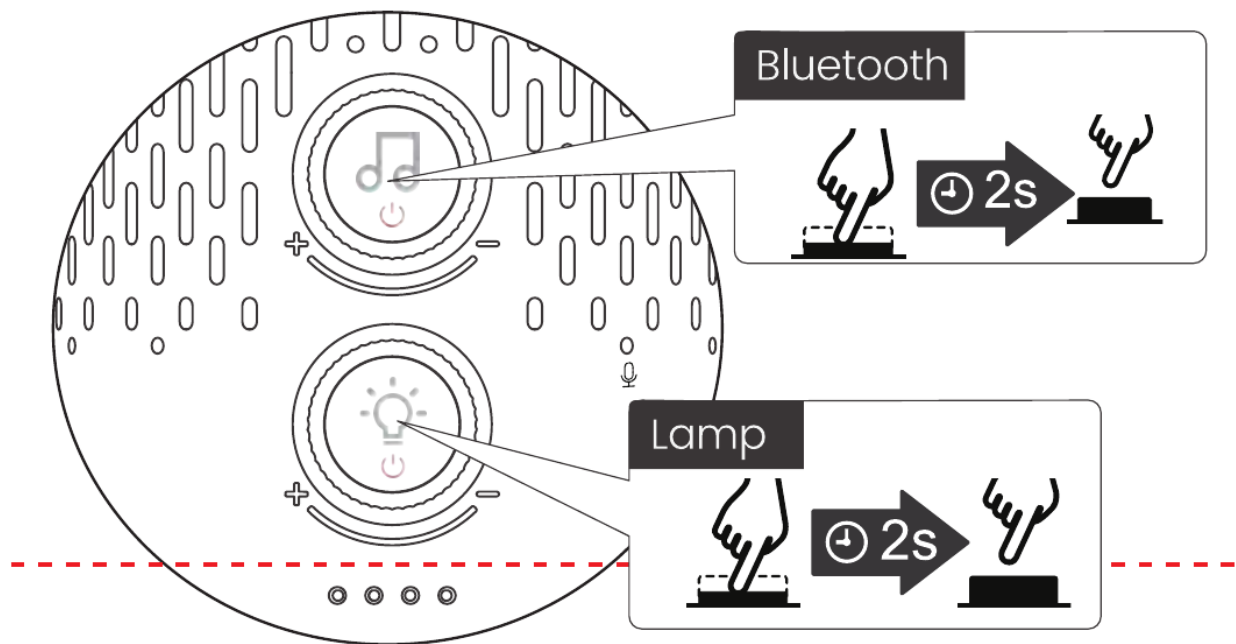


- (1) Lamp holder
- (2) Telescopic pole
- (3) Audio Button
- (4) Lamp Button
- (5) Battery indicator light
- (6) Ambient Light
- (3) Tipod
- (8) Tripod switch
- (9) Microphones

(10) USB-A interface

(11) Type-C interface

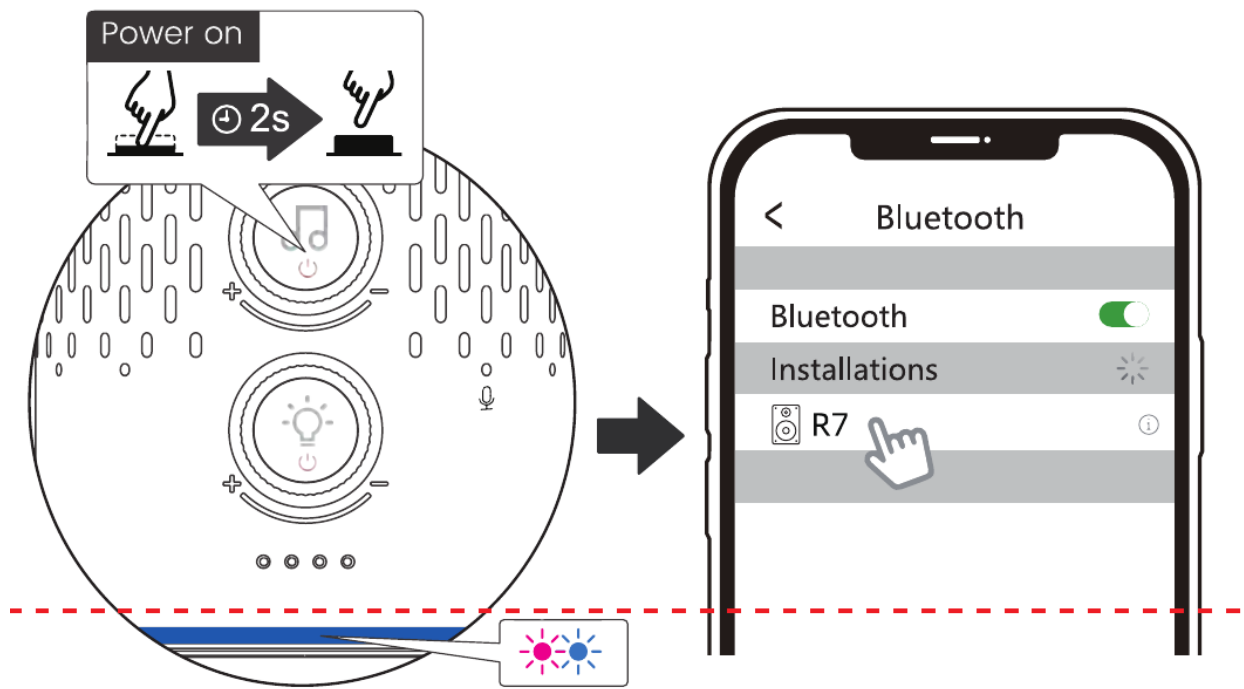
## Power on/off



**Lamp:** Long press the lamp button for 2S to turn on/off the lamp.

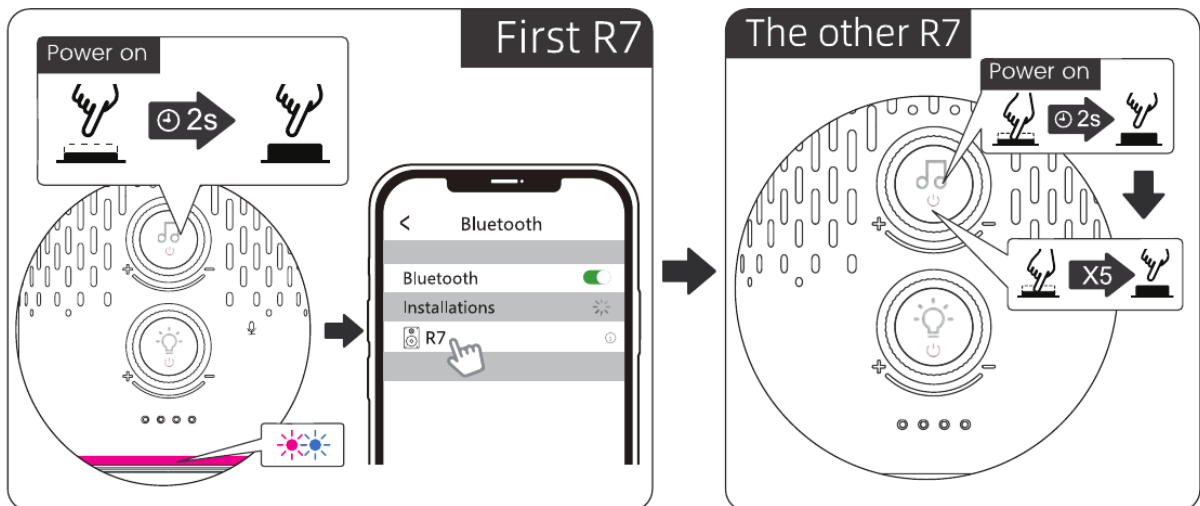
**Bluetooth:** long press the Audio Button for 2S to turn on/off Bluetooth speaker.

## Pairing



Bluetooth will automatically enter the search state when it is turned on (purple light and blue light flash alternately). Just open the Bluetooth on your phone and search for the Bluetooth name R7 to connect.

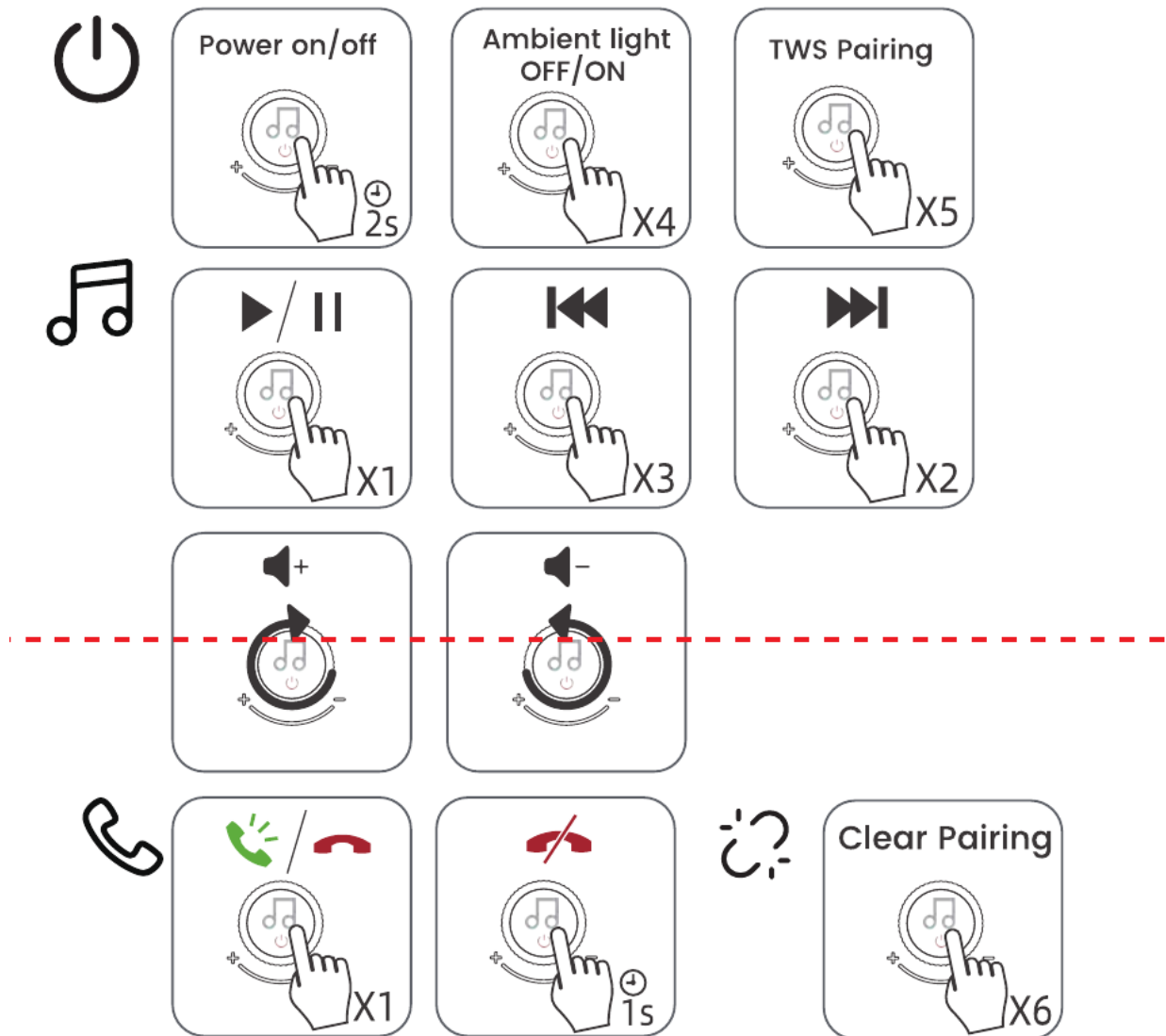
## TWS Pairing

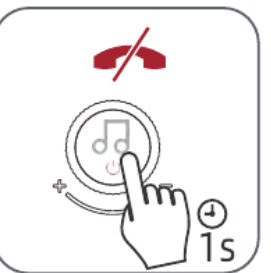
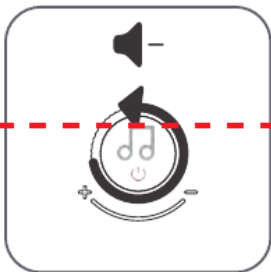
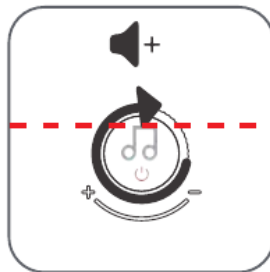
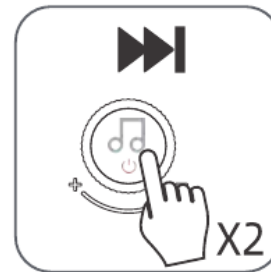
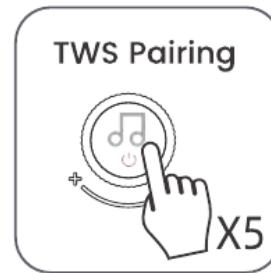
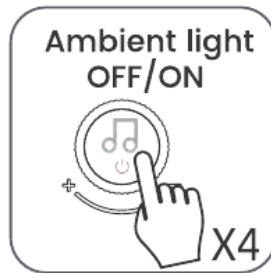
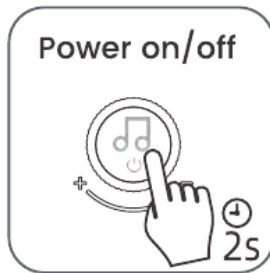


After the mobile phone is connected to one R7, turn on the Bluetooth of the other R7, and then quickly click the audio button of any R7 for 5 times in a row to complete TWS pairing.

**(Quickly click the audio button of any R7 for 5 times in a row to exit the TWS mode)**

## Key Operation

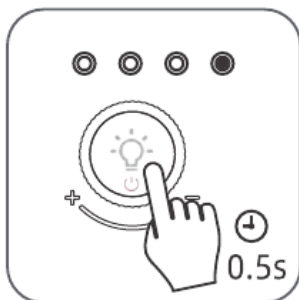
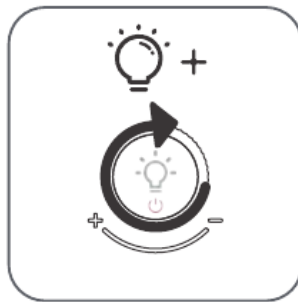
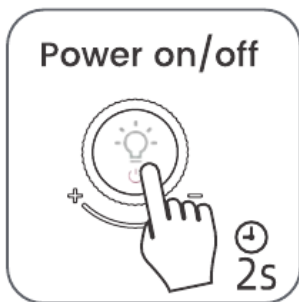




EN: ×1: Press once

⌚ 1s: Press and hold for 1s

↻ : Rotate



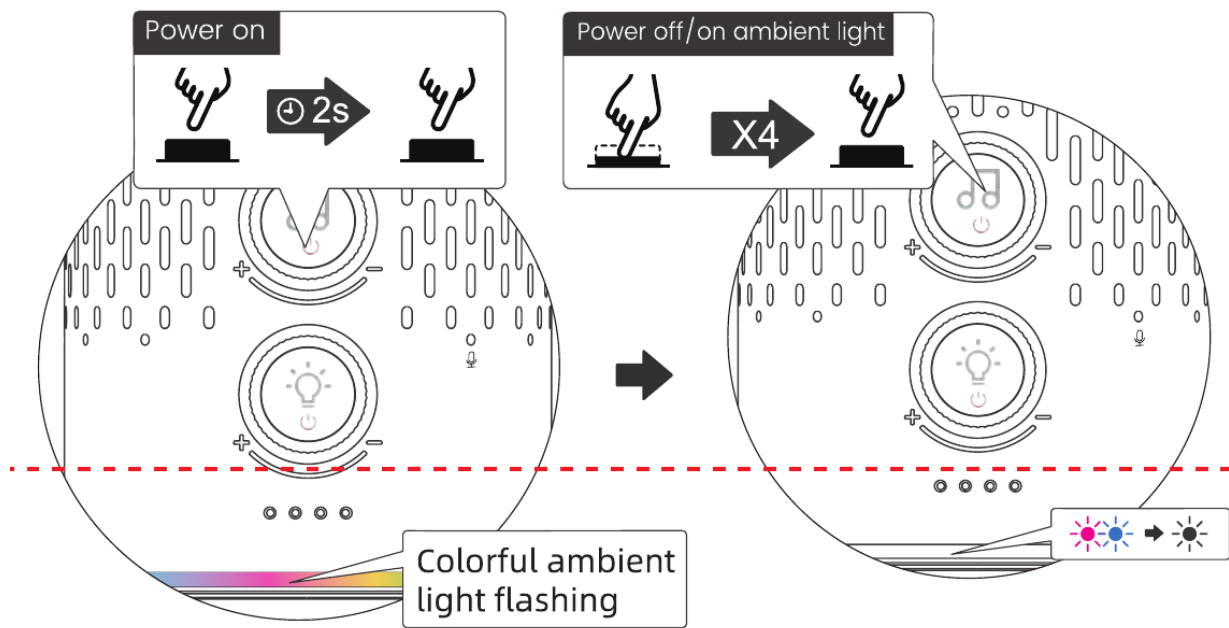
EN: ×1: Press once

⌚ 1s: Press and hold for 1S

↻ : Rotate

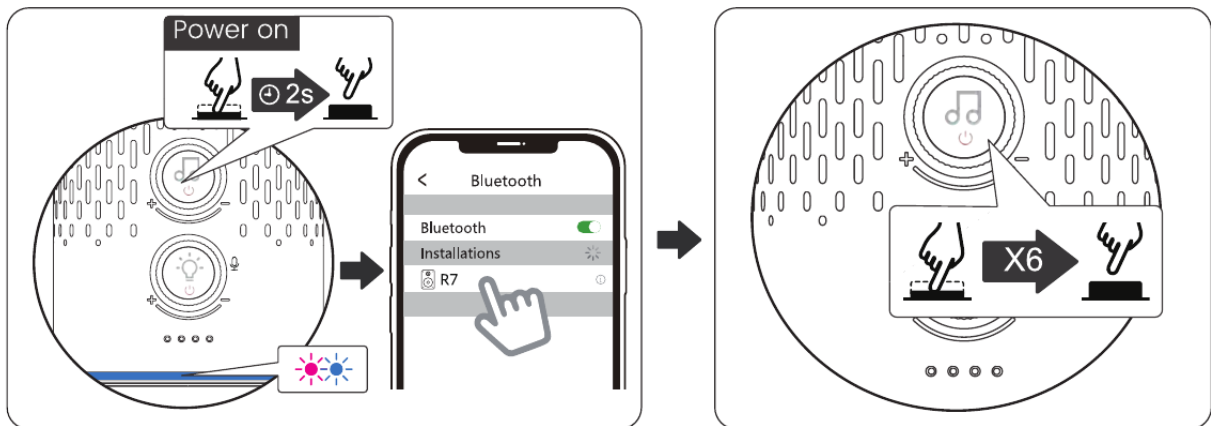
## Power off/on ambient light





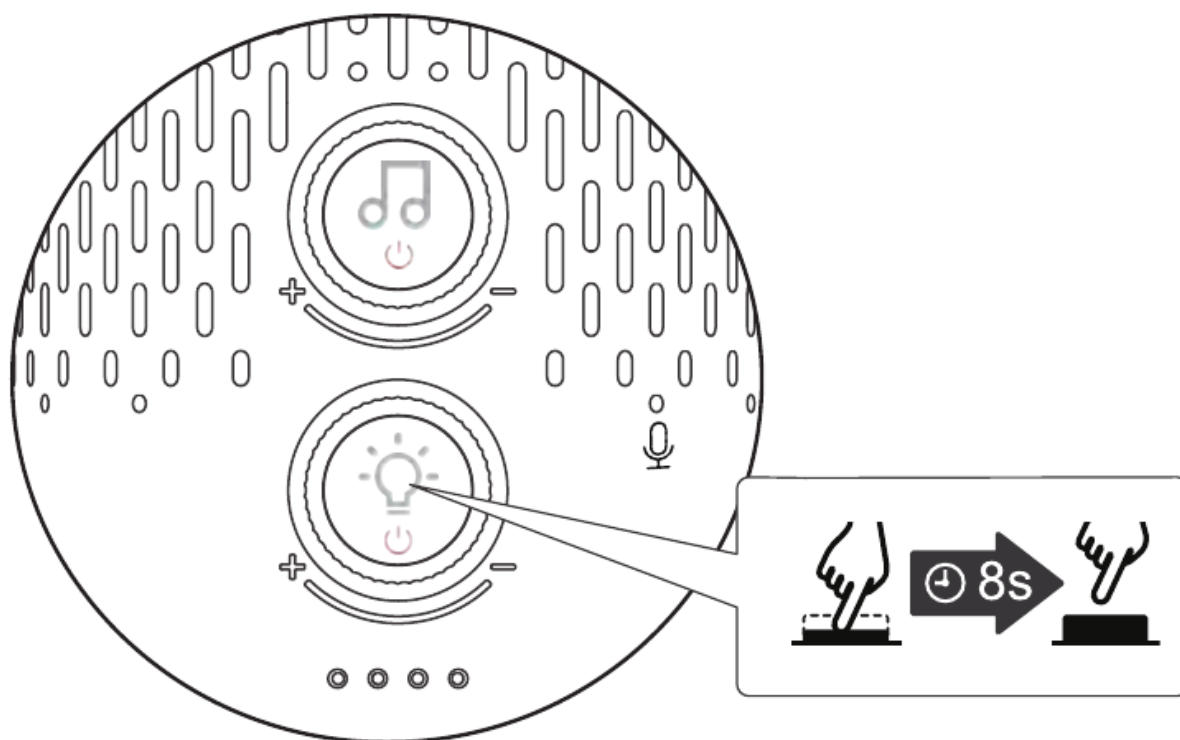
After Bluetooth is turned on, the ambient light is turned on by default. Quickly click the audio button for 4 times in a row to turn off/on the ambient light.

## Clear Pairing



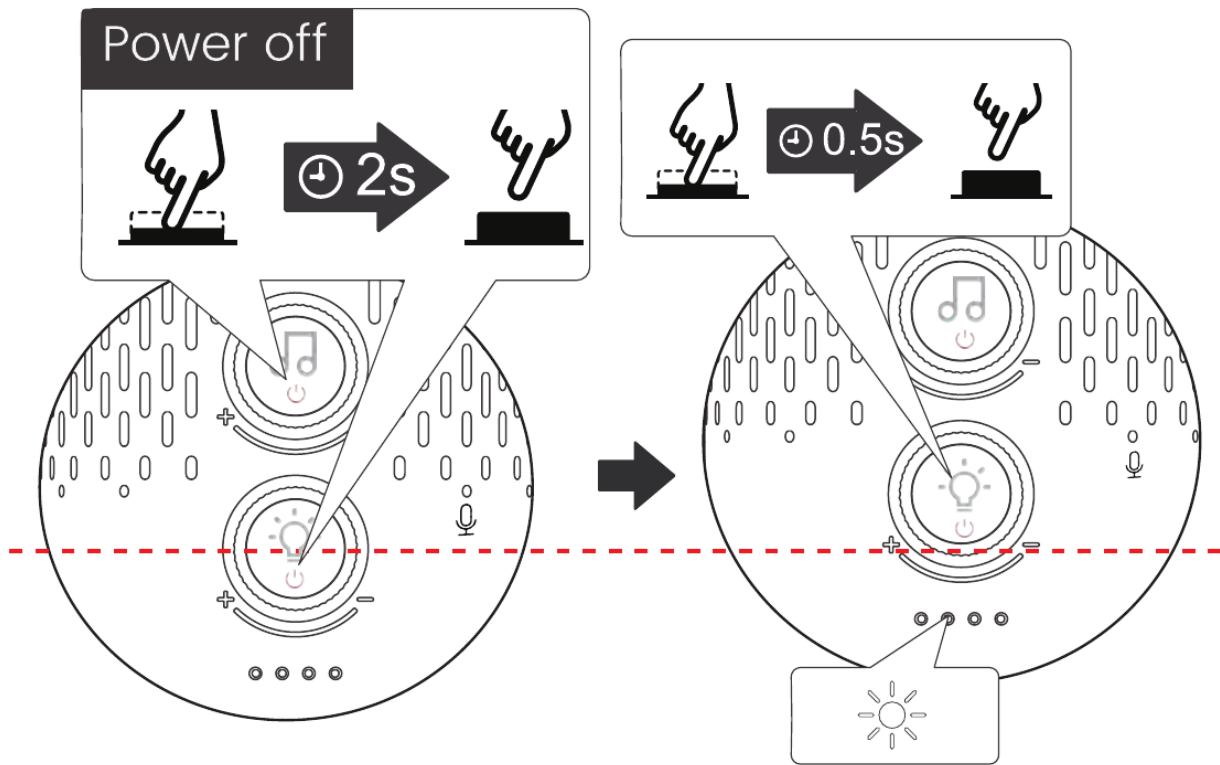
When connected, quickly click the audio button for 6 times in a row to clear pairing record.

## Reset



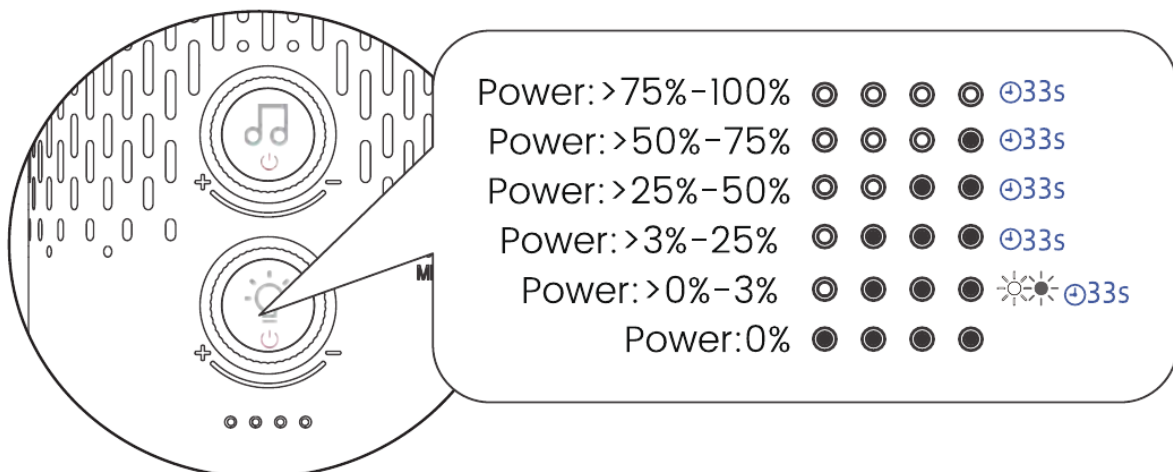
When playing without sound or freezing, please press and hold the lamp button for about 8S in any state to reset it.

## Power Display



When the Bluetooth speaker and lights are turned off, press and release the lamp button for 0.5 seconds to trigger the fast charge output and battery indicator.

## Battery Indicator



When using a Bluetooth speaker, the Bluetooth speaker will automatically turn off after 15 minutes after the beep sounds when the battery power is lower than 25%.

## **Warranty**

Warranty service is limited to normal use. Any man-made damages such as from connecting to an unsuitable power source, using an unsuitable device, or not following the instructions, as well as damages that did not occur during shipping, repairs, and adjustments not approved by the company, damages from misuse, inattention, or improper installation may cause the warranty to be ineffective immediately. This warranty does not

include shipping fees

## **Disposal**

Always dispose of the used appliance at a recycling centre. Do not dispose the used appliance together with household waste.

eVatmaster Consulting GmbH

Bettinastr. 30

60325 Frankfurt am Main, Germany

[contact@evatmaster.com](mailto:contact@evatmaster.com)