

Shenzhen Junyi Projector User Manual 2BG20- HY300MINI

Manualsum, simplified manuals

Table of Contents

- [Shenzen Junyi Projector User Manual](#)
 - [Important safety precautions](#)
 - [Use Of Remote Control](#)
 - [Check before use](#)
 - [Wired Screen Function](#)
 - [IOS connect by Cables](#)
 - [Android cable is on the same screen](#)
 - [Setting WIFI](#)
 - [Wireless screen](#)
 - [Media under the second UI](#)
 - [Setting](#)

Shenzen Junyi Projector User Manual

(2BG20-HY300MINI)



Important safety precautions

Identification of electronic information product pollution control labeling requirements.

(1) Contains the name of 6 kinds of harmful substances, contains the amount, contains part.

This product is contained in the name of the 6 kinds of harmful substances, contain quantity, containing the part shown in the table below:

Name and content of toxic and harmful substances or elements in the product.

Part name	Toxic or harmful substance or element					
	Pb	Hg	Cd	Cr(VI)	PBB	PBDE
Actual substrate	o	o	o	o	o	o
Framework	o	o	o	o	o	o
Light source	o	o	o	o	o	o
Connecting wires between machines	o	o	o	o	o	o

Note (meaning of o or x)

“o” indicates that the content of the toxic and harmful substance in all homogeneous materials of the component is below the limit requirements specified in SJ/T11363-2006 standard. x means that the content of the toxic and harmful substance in at least one homogeneous material of the component exceeds the limit requirements specified in SJ/T11363-2006 standard. 1. “Frame” of part name, including external frame and internal component.

(2) Pollution control label of electronic information products.

The environmental protection service life of this product is marked according to the national Pollution Control And Management Measures for Electronic information Products published on 2/28, 2006.

As long as the product can comply with the safety and use of matters needing attention, from the production date within the number of years, will not have a profound impact on environmental pollution, human body, property.

When the product is discarded after normal use, the recycling and reuse of electronic information products should comply with the requirements of local laws and regulations.

(3) Packaging recycling mark (GB18455-2001)

According to the packaging recycling mark (GB18455-2001), each packaging material of the product is identified.

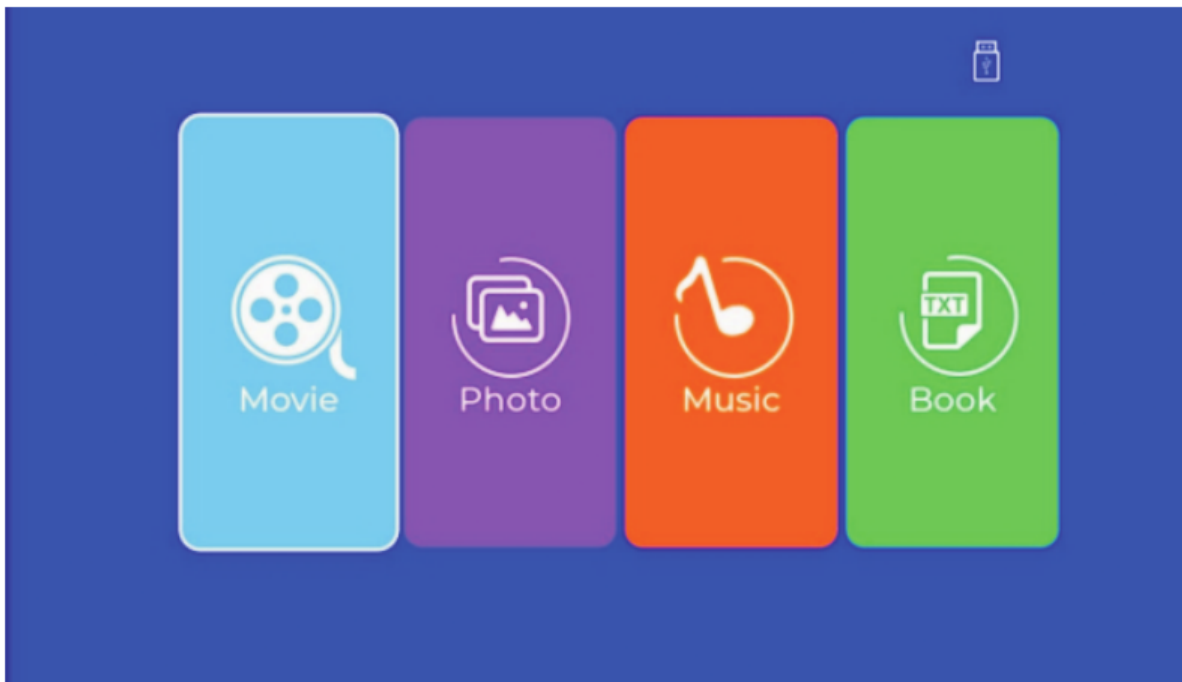
When discarding packaging materials, please comply with local laws and regulations on recycling and reuse of packaging materials.

Use Of Remote Control



Check before use

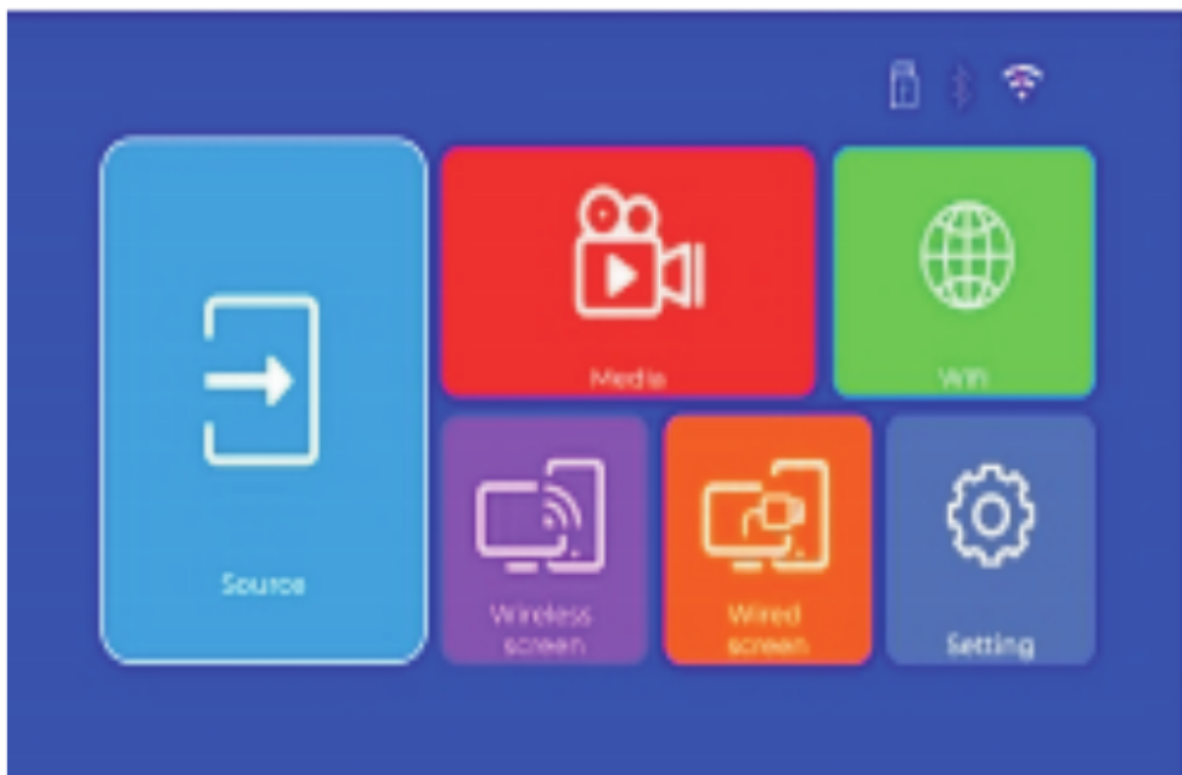
Turn on the projector, please check your projector UI Edition (UI 1)



This UI is the Basic function model UI,It can support play Video,Music,Photo.You also can connect it with your smart phone via the USB original cable.

Users need to select the correct signal input source before accessing the computer, TV, set-top box, game box, dvd etc.

Turn on the projector,please check your projector UI Edition (UI 2)

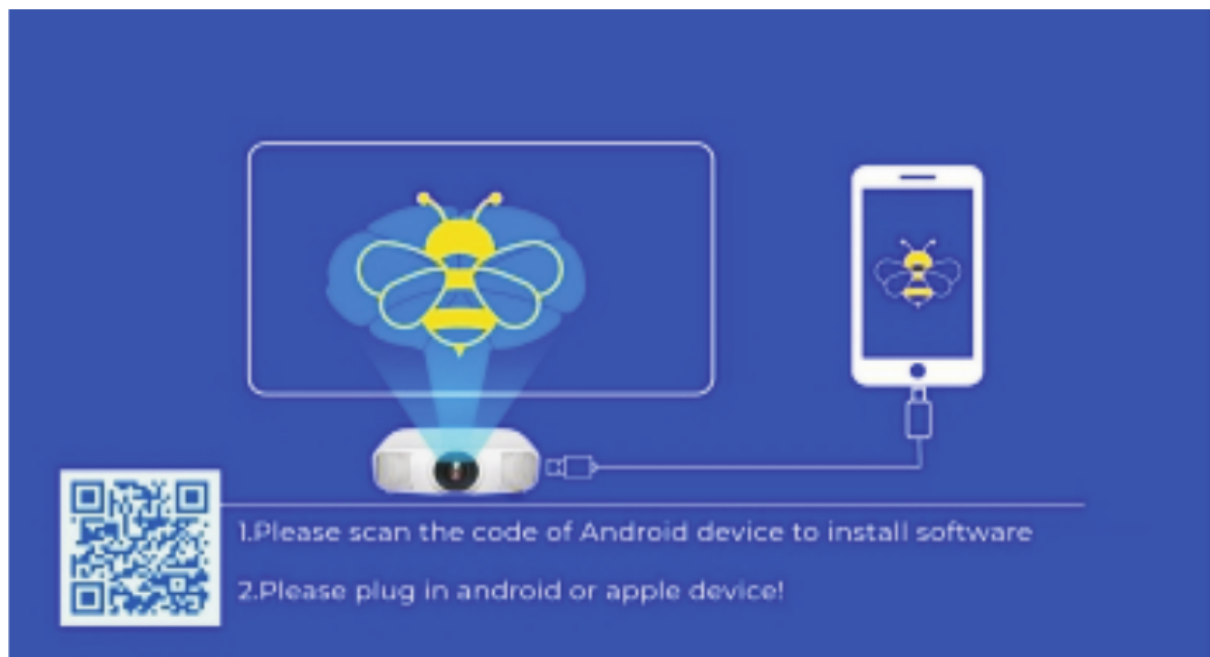


This UI support wireless screen mirroring function, It can support play Video, Music, Photo. You also can connect it with your smart phone via the USB original cable.

Users need to select the correct signal input source before accessing the computer, TV, set-top box, game box, dvd etc.

Wired Screen Function

Press Source button or press Wired screen function under UI two, Then choose Wired Screen function, Then the below UI will show UP.



IOS connect by Cables

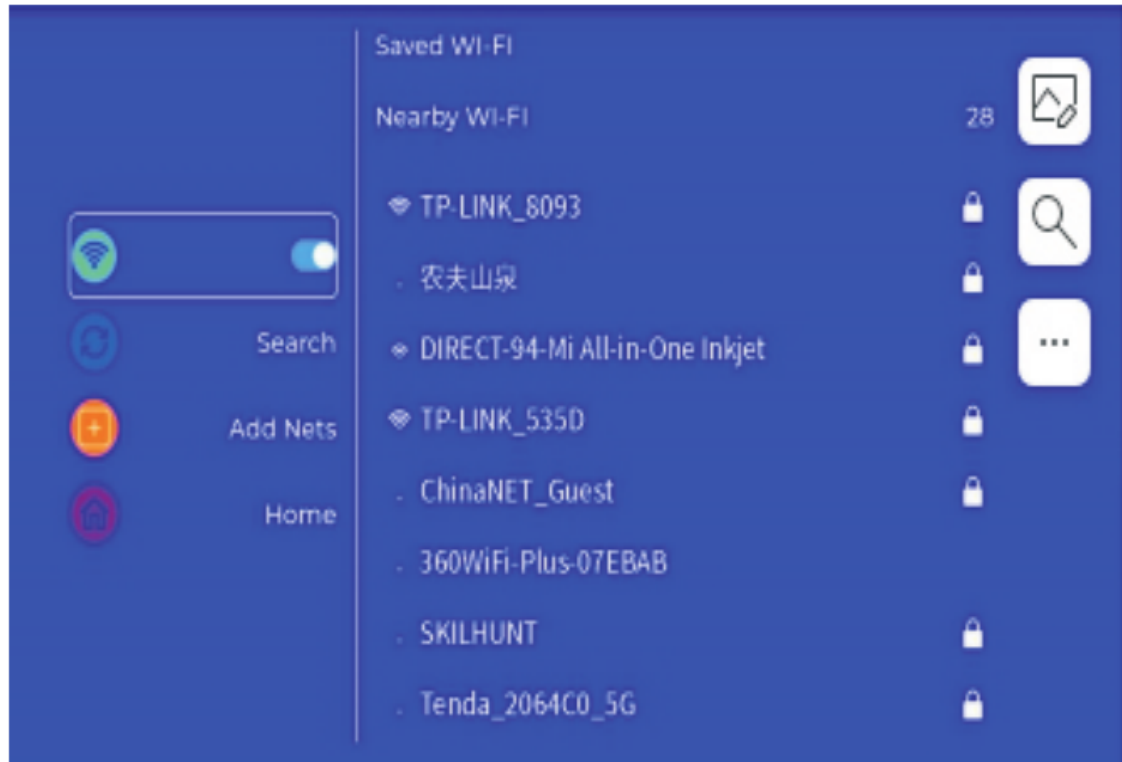
1. Connect your iPhone to the projector via the original iPhone charging cable. (Cable has a USB port and Lighting Port)
2. Please click "Trust" when the iPhone shows a pop-up window.
3. Enter device password.

Android cable is on the same screen

1. Connect your Android phone to the projector via the original Android phone cable. (The data cable must have a USB port and be connected to a computer to read the contents of the phone)
2. Install the APK required for the same screen according to the prompt, or scan the two-dimensional code on the projector screen interface to download and install.
3. After the APK is installed successfully, the same screen function can be realized.
4. Note that when Android phones are on the same screen, the sound is coming from the phone, not from the projector.

Setting WIFI

1. Press setting button on remote control or enter setting function on first page of the second UI.
2. After enter the wi fisetting interface open the “wireless and internet” button.
3. choose a WiFi and input the password, then connect it.



Wireless screen

Wireless screensupportfor Appleand Android devices

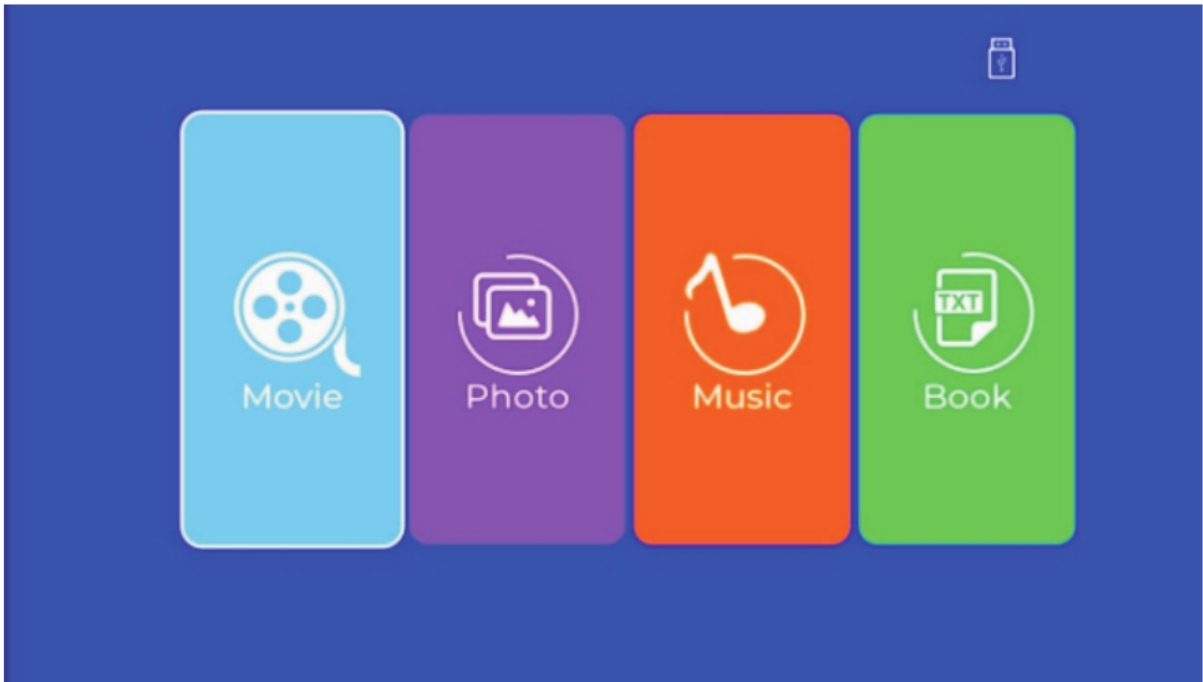
1. Turn on WiFi of the mobile phone.
2. Turn on the “wireless display”/”screen mirroring” function in the phone settings and choose the device name.Then connect it.



Please make sure your smart phone and projector connect to the same WiFi.

Media under the second UI

This page can play video, music, photos and e-books as well.



You can use remote control to choose and play after connect to a USB driver or hard disk.

Setting

You can setting language, image, color or keystone etc. here.

