

Shenzen Oukai Automotive Car Ai Box User Manual

Manualsum, simplified manuals

Table of Contents

- [Shenzen Oukai Automotive Car Ai Box User Manual](#)
 - [Product introduction](#)
 - [Wireless CarPlay— ios Phone User](#)
 - [Wireless Android Auto—Andrid Phone User](#)
 - [If your car Built-in with wired CarPlay and wired Android Auto, both can be converted to wireless connectivity](#)
 - [Box Upgrade](#)
 - [How to update the product?](#)
 - [Does the Ai Box have requirements for the phone?](#)
 - [How to check if Ai Box suit for my car?](#)
 - [Do i have to sync the wireless Ai box adapter every time when starting my car?](#)
 - [How to upload the log data when the adapter doesn't work for my car unit?](#)

Shenzen Oukai Automotive Car Ai Box User Manual

Shenzen Oukai Automotive Car Ai Box User Manual

Shenzhen Oukai Automotive Technology Car Ai Box User Manual

[2BEET-DGSD201](#)

Product introduction

Car inteligent conversion box,mainly used for realizing the Wireless interconnection of mobile phone and car.

The conversion function integrates the mobile phone and the car screen,which will convert the diversified Mobile phone to car entertainment, providing users with music & abundant driving pleasure,reducing the [Manualsum](#)

frequency of using the mobile phone, providing users with a safer driving Car experience.

Wireless CarPlay— ios Phone User

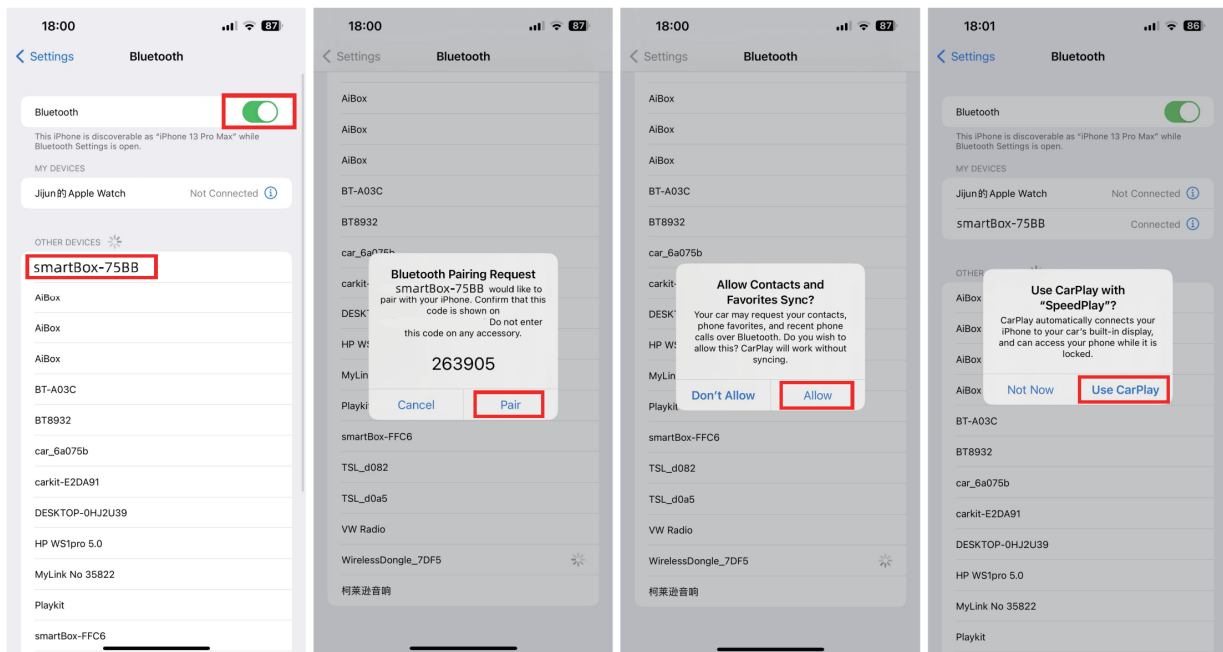
1. Connect the box to the original car USB or Type-C data interface; Read box data and wait for a Connection.

Turn on WLAN

WLAN



2. Turn on the Bluetooth of the iPhone, search for the Bluetooth Device naming "OKBox-BT ****" or "smartBox-****" or "AIBox-BT_****" Pair it and allow the sync, finally click "Use CarPlay"



3. After the Connection please wait for a few seconds and CarPlay interface will be shown.



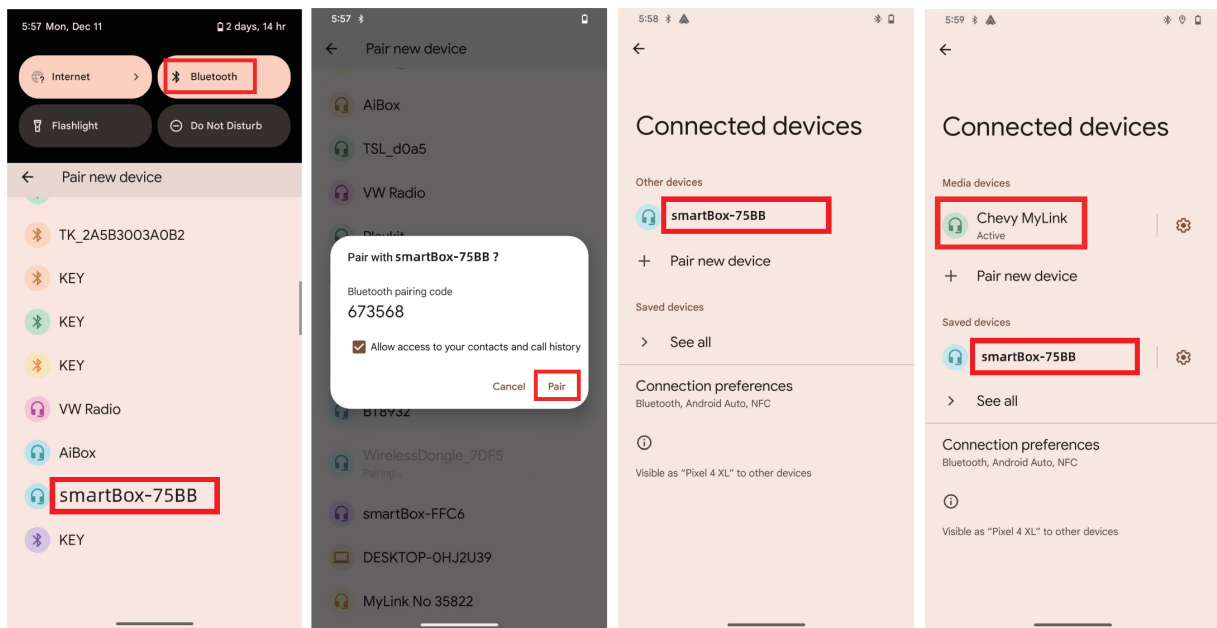
Wireless Android Auto—Andriid Phone User

1. Connect the box to the original car USB or Type-C data interface;Read box data and wait for a Connection.

Turn on WIFI



2. Turn on the Bluetooth of the Phone, search for the Bluetooth Device naming “OKBox-BT_****” or “smartBox-****” or “AIBox-BT_****” The device name will change to “Your Car MyLink” after the link is successful.



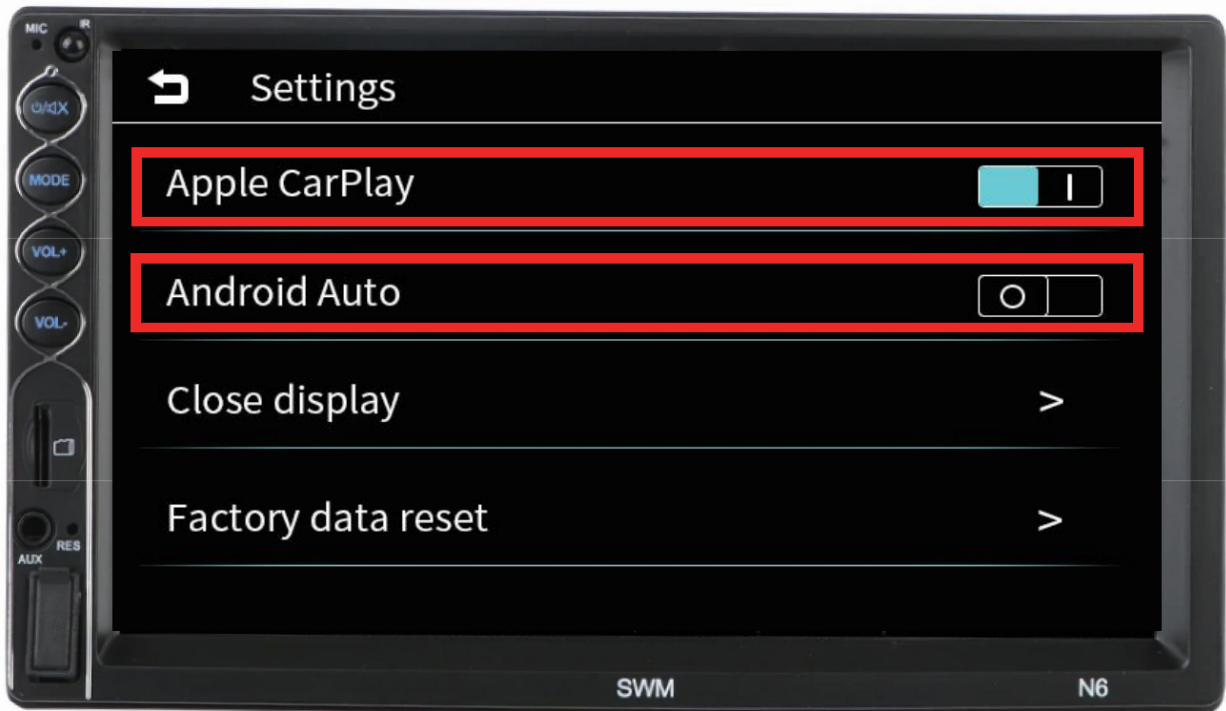
3. After the Connection please wait for a few seconds and Android Auto interface will be shown.



If your car Built-in with wired CarPlay and wired Android Auto, both can be converted to wireless connectivity

You can open the corresponding options through the Settings of the original car (Some machines do not need to be set up), if you are an iPhone, open CarPlay for Bluetooth connection,

if you are an Android phone, open Android Auto for Bluetooth connection.



Box Upgrade

How to update the product?

Put directly into the USB 5V power supply upgrade, such as phones charger car charger USB. (If you plug the original USB port to upgrade, the upgrade will fail);



Join the WiFi devices naming "OKBox-BT_****" or "smartBox-****" or "AIBox-BT_****" on your Phone with password:88888888

Online updates

Enter the IP Address 192.168.1.101 in your Browser, and press click to upgrade ;wait for a few minutes for upgrade.

upgrad

192.168.1.

[Note: Please forget the Networks after upgrading sucessfully.]

Does the Ai Box have requirements for the phone?

Yes, the wireless CarPlay is available for iOS 12.1 and above. wireless Android Auto is available for Andorid10.0 and above.

How to check if Ai Box suit for my car?

- a.** If your Original car only supports wired CarPlay, it can only help you switch to wireless CarPlay.
- b.** If your Original car only supports wired Android Auto, it can only help you switch to wireless Android Auto.

c. If your Original car supports wired CarPlay and Android Auto, it can help you switch to wireless CarPlay and wireless Android Auto.

[Depending on whether the original car supports this feature, it just helps you switch from wired to wireless]

Do I have to sync the wireless Ai box adapter every time when starting my car?

Don't worry, After the first adaptation, the wireless CarPlay or Android Auto adapter will automatically match the Bluetooth and WiFi of your iPhone every time.

How to upload the log data when the adapter doesn't work for my car unit?

Please enter the IP address page & fill in the car info in the problem description sheet, and press "Submit" to upload your log data.