

[Sonoff Zigbee Smart Water Valve User Manual V1.0](#) [2APN5SWV](#)

[Manualsum](#), simplified manuals

Table of Contents

- [Zigbee Smart Water Valve User Manual V1.0](#)
 - [Introduction](#)
 - [Compatible Voice Assistants](#)
 - [Specification](#)
 - [Download the eWeLink App & Add SONOFF Zigbee Gateway](#)
 - [Power On the Device](#)
 - [Scan QR Code to Add Device](#)
 - [Matched Gateways](#)
 - [Installation](#)
 - [Communication Distance](#)

Zigbee Smart Water Valve User Manual V1.0

(2APN5SWV)

SONOFF

Water Valve



Introduction

A Zigbee Smart Water Valve powered by four AA batteries, which is easy and quick to install. You can remotely control and set scheduled irrigation, quantitative irrigation, intelligent scenes and so on through the APP to make the traditional irrigation system intelligent. It supports statistics of irrigation water consumption, and can view 6-month historical records at any time, helping you

better manage water resources and save water bills.



APP control



Timed watering



Cyclic irrigation



Water consumption
statistics



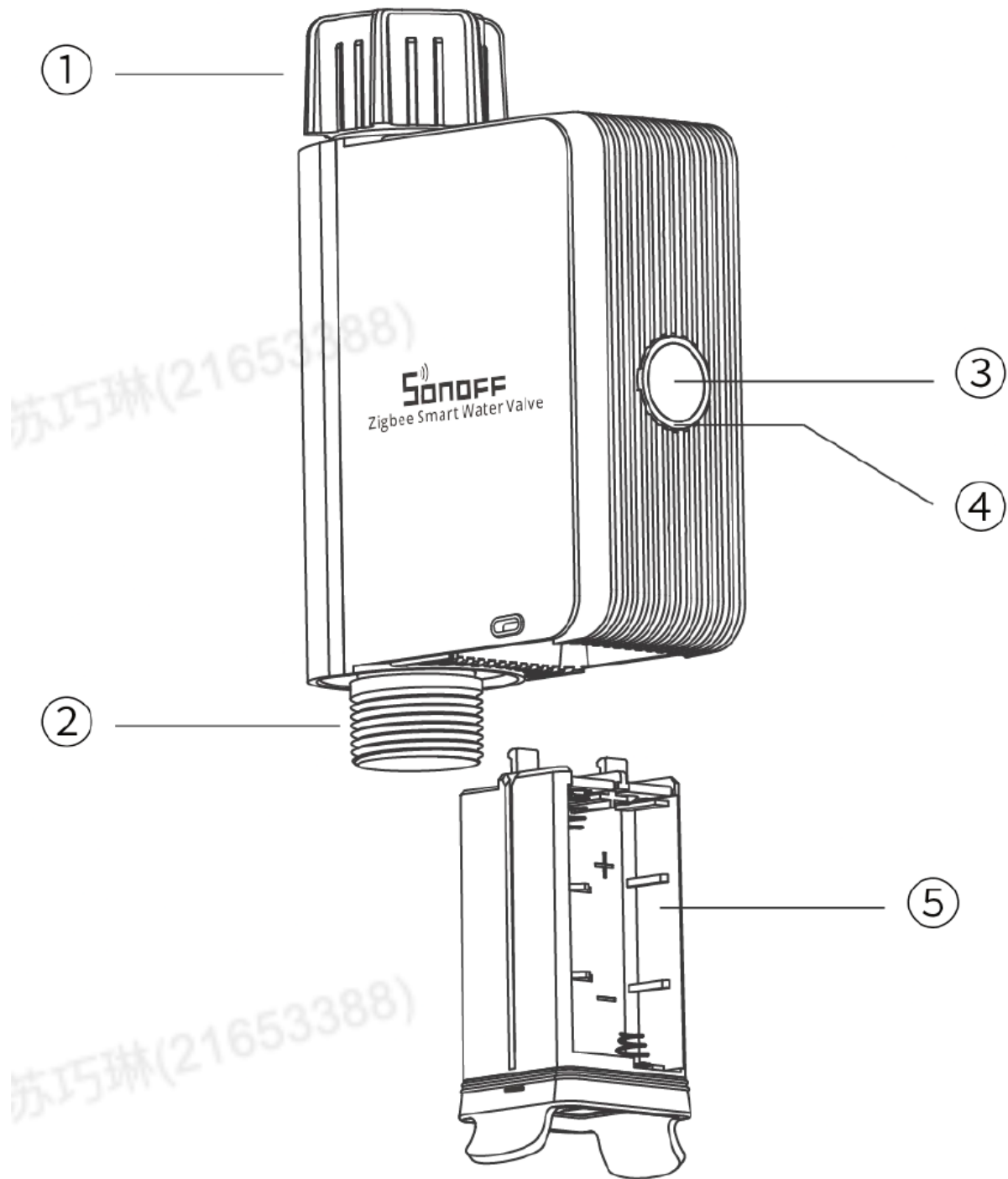
6-month history



Scene linkage

*The functional characteristics depend on the functionality of Zigbee gateway.

[Manualsum](#)



1. **Inlet**
2. **Outlet**
3. **Button**

- **Single press:** Turn on/off the smart device.
- **Press and hold for 5 seconds:** The device enters the pairing mode.

4. **LED indicator (Green)**

- **Steady on:** Normal connection with the gateway.

- **Slow flash:** The device is in pairing mode.
- **Fast flash:** Abnormal connection with the gateway.

5. Battery slot

Compatible Voice Assistants



Specification

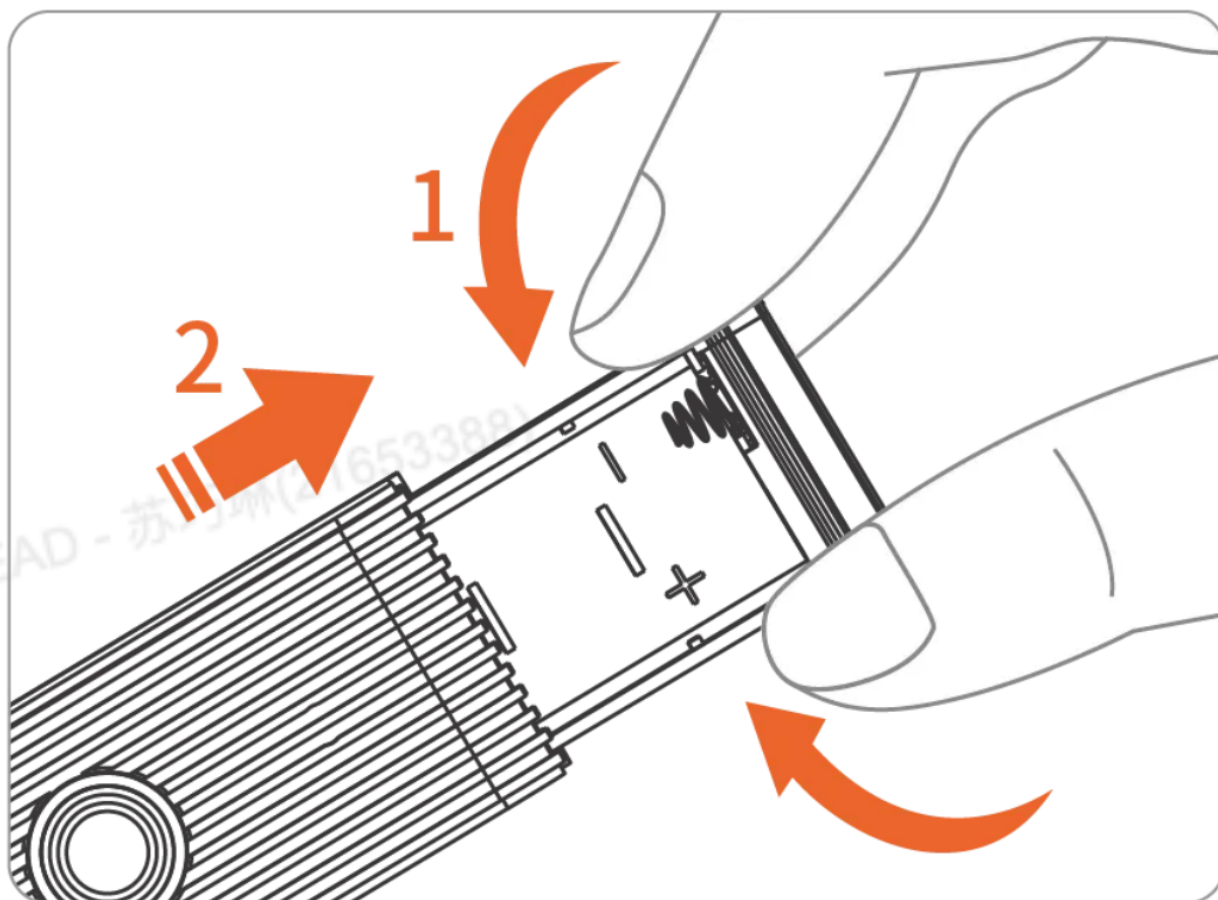
Model	SWV-NH, SWV-BSP
MCU	EFR32MG22
Rating	6V=(4*1.5V AA)
Wireless connection	Zigbee 3.0
Communication distance	~~ 130M (open space)
Waterproof	IP55
Working Pressure	0.06~0.8 MPa
Net weight	278g
Dimension	152x100x46mm
Color	Black
Casing materials	PC+ABS
Working Temperature	5~60C
Watering Temperature	5~40C
Working humidity	5%~95% RH, non-condensing
Working altitude	<2000M
Certification	CE/FCC/ISED
Executive standard	EN62368-1

Download the eWeLink App & Add SONOFF Zigbee Gateway

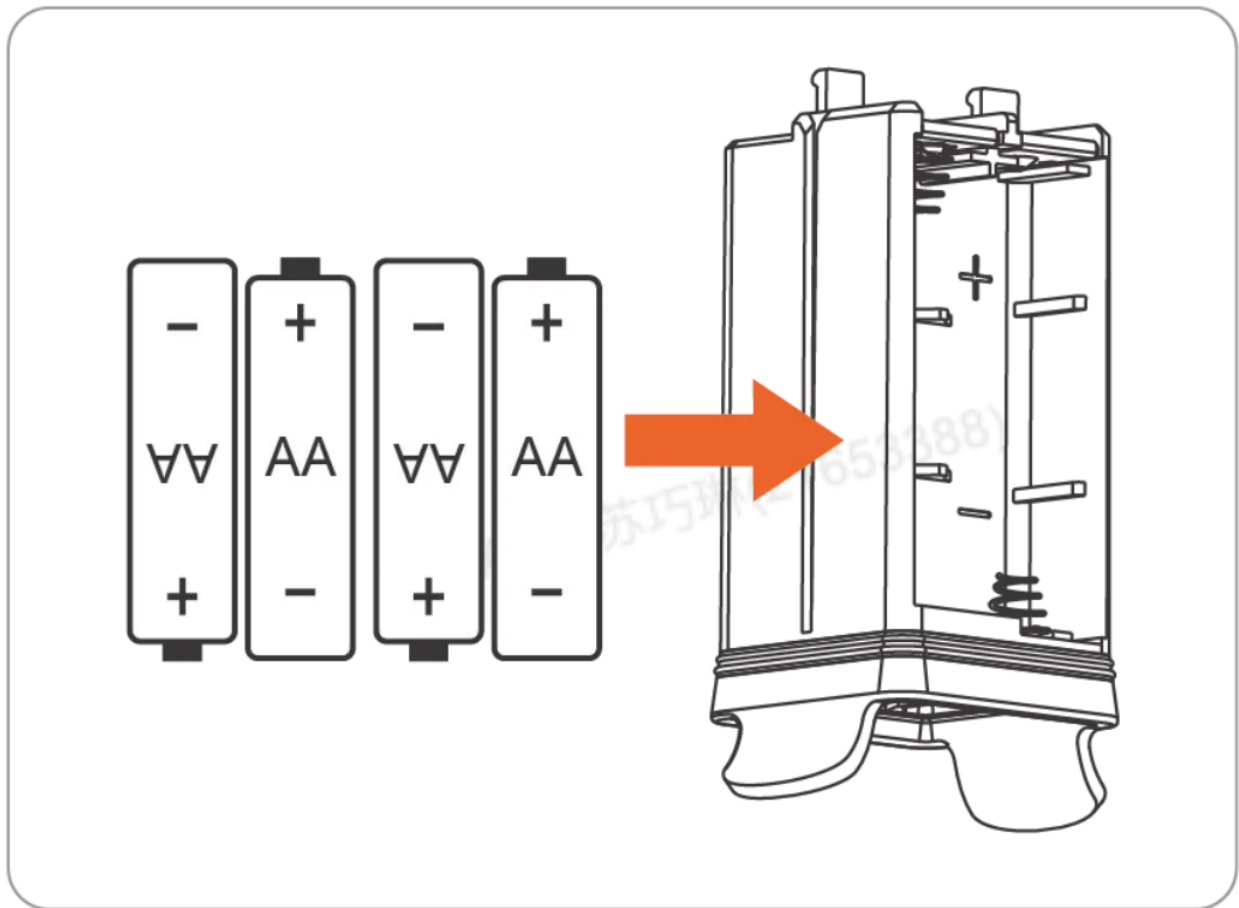
Please download the “eWeLink” App from Google Play Store or Apple App Store.

Power On the Device

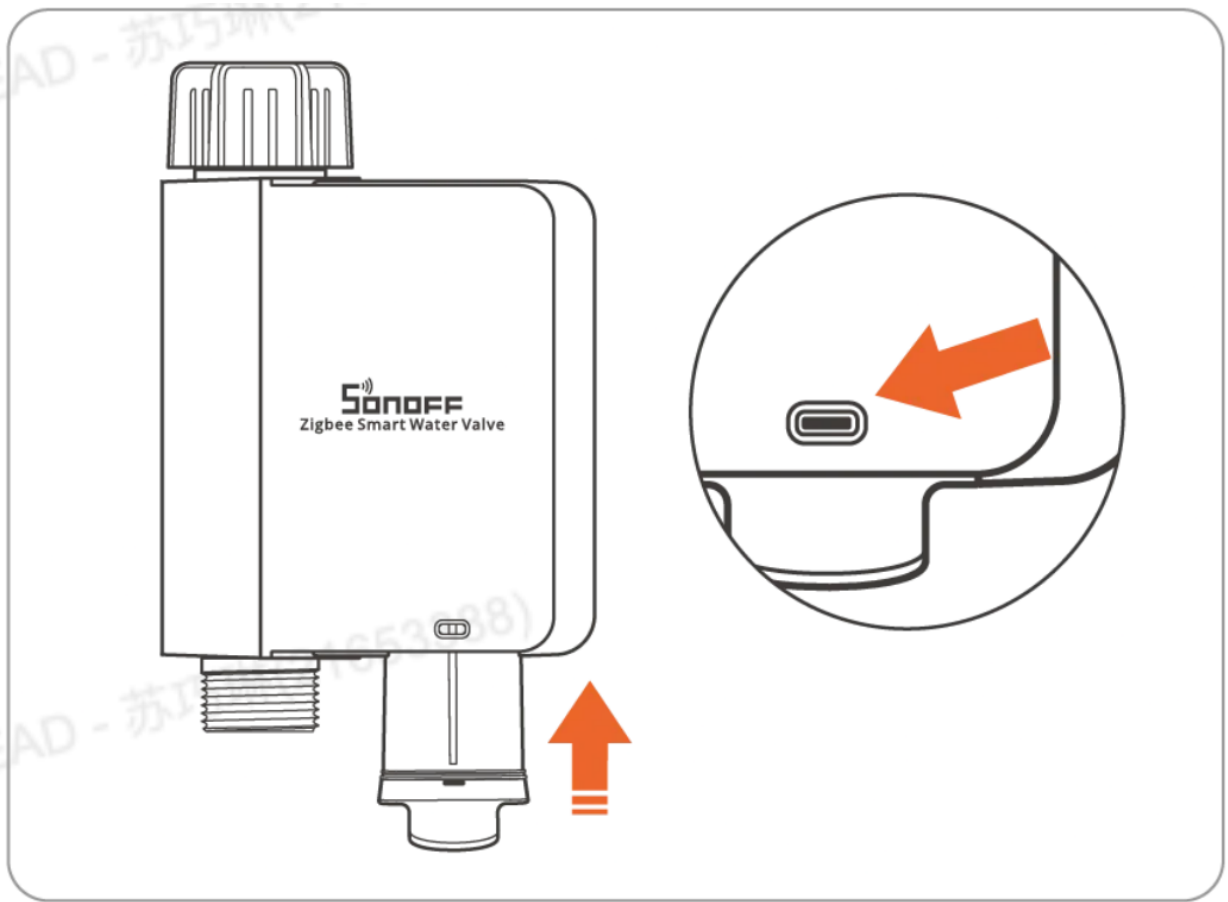
1. Hold both ends of the battery compartment cover and pull out the battery slot.



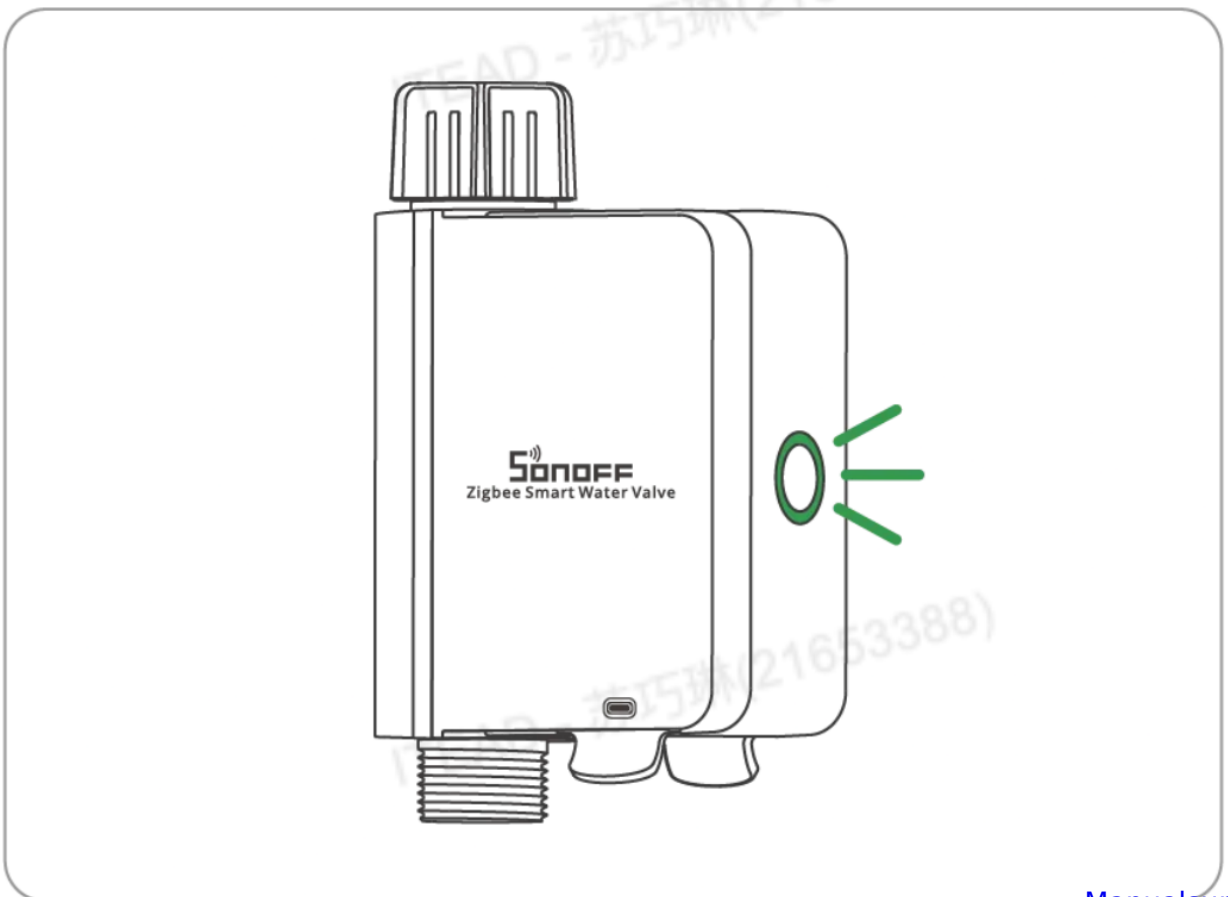
2. Install four AA batteries.



3. Firmly press the battery slot into the device until the snap at the arrow is visible.

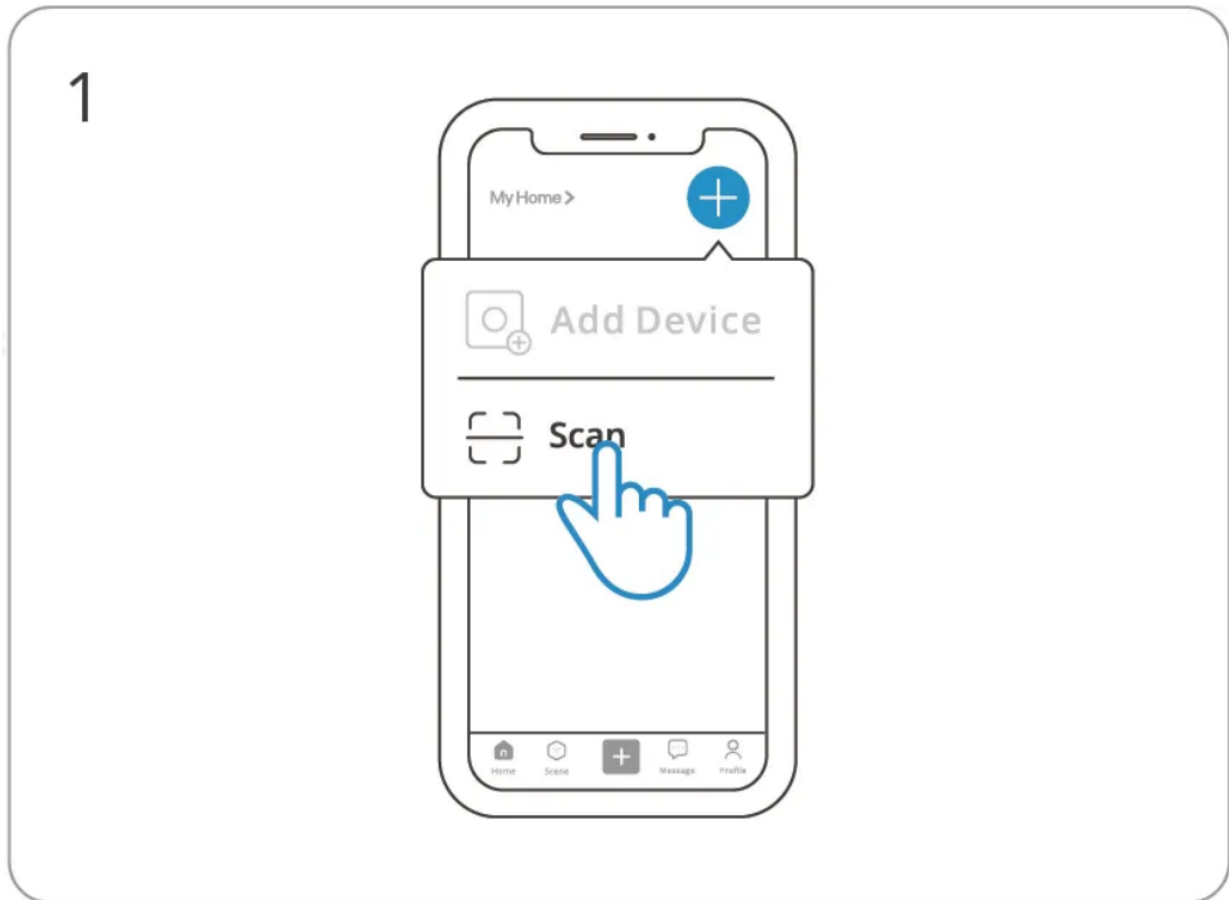


4. After powering on, the button LED light flashes.



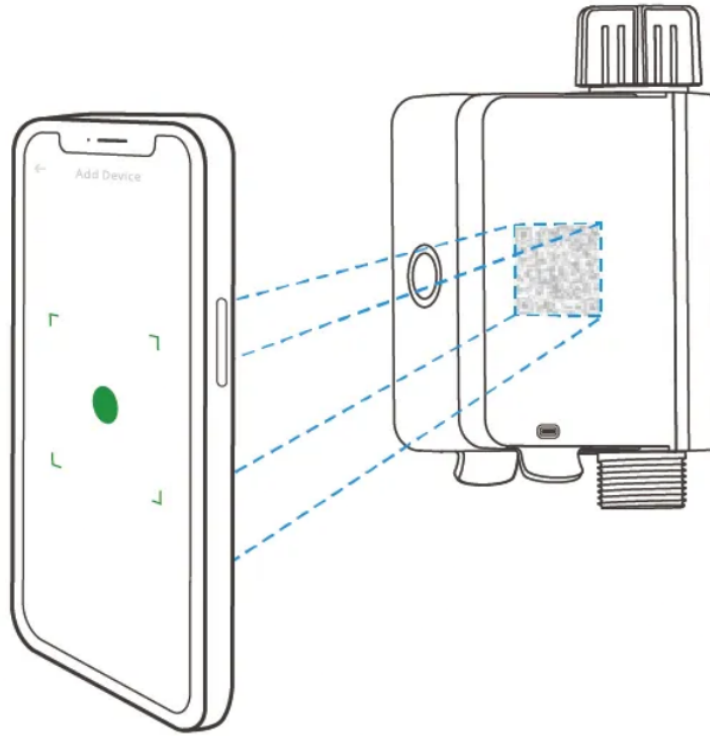
Scan QR Code to Add Device

Enter "Scan"



Scan the QR code on the device

2



Select "Add Device"

3



Long press the button for 5 seconds



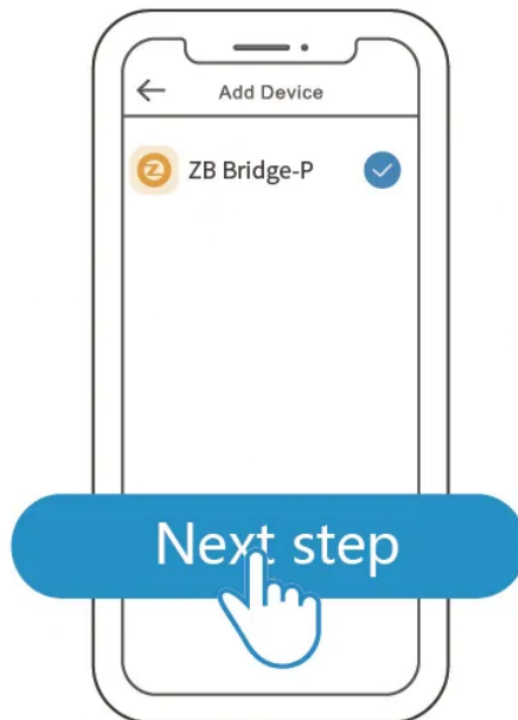
The LED indicator flashes slowly for 180s

5

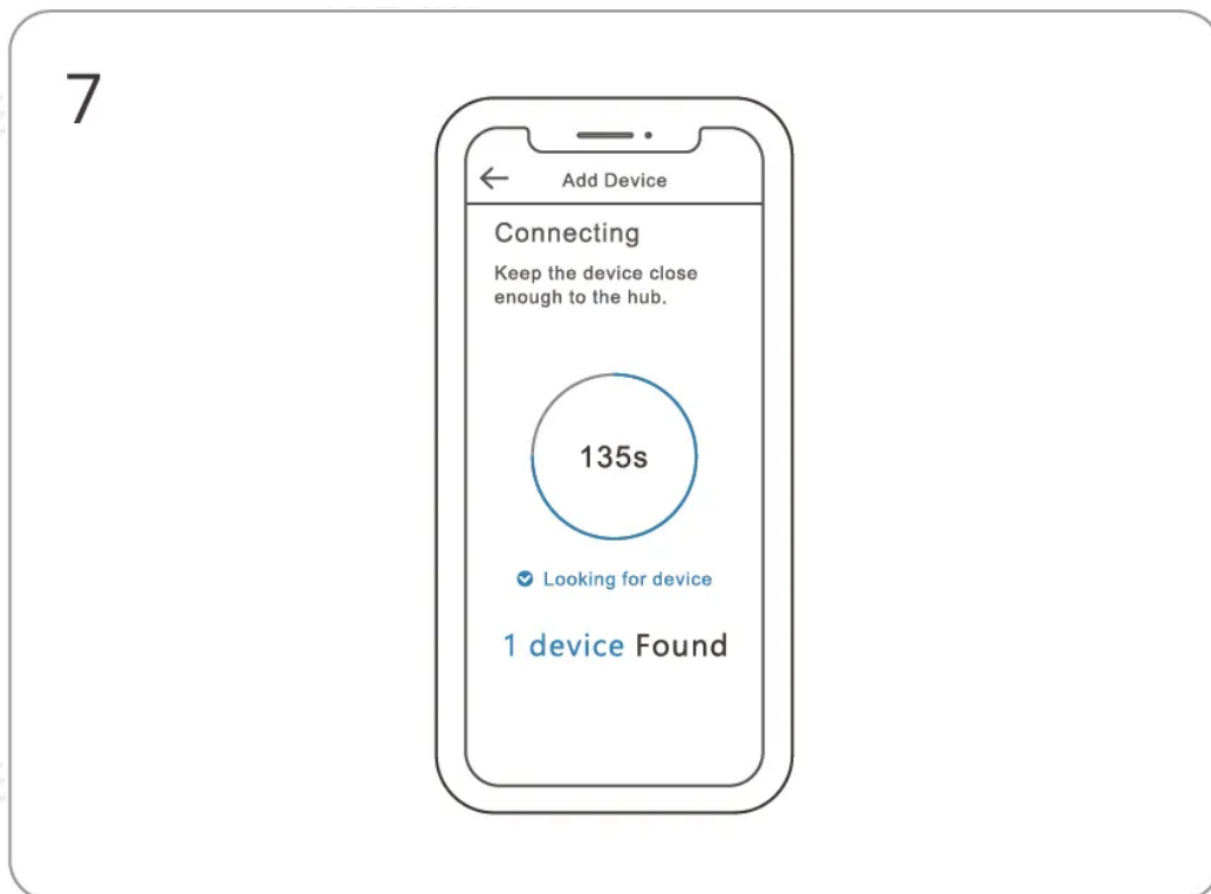


Select Zigbee gateway

6



Wait until the addition is done



Matched Gateways

Recommended SONOFF gateway models: ZBBridge--P (v2.0.0), NSPanel Pro (V3.3.0), iHost (V2.1.0), ZBBridge-U (soon to be supported)

*Before adding a device, please upgrade the gateway firmware to the aforementioned version or the latest version available.

Other compatible SONOFF gateway models: ZBDongle-P, ZBDongle-E

Third-party compatible gateway models:

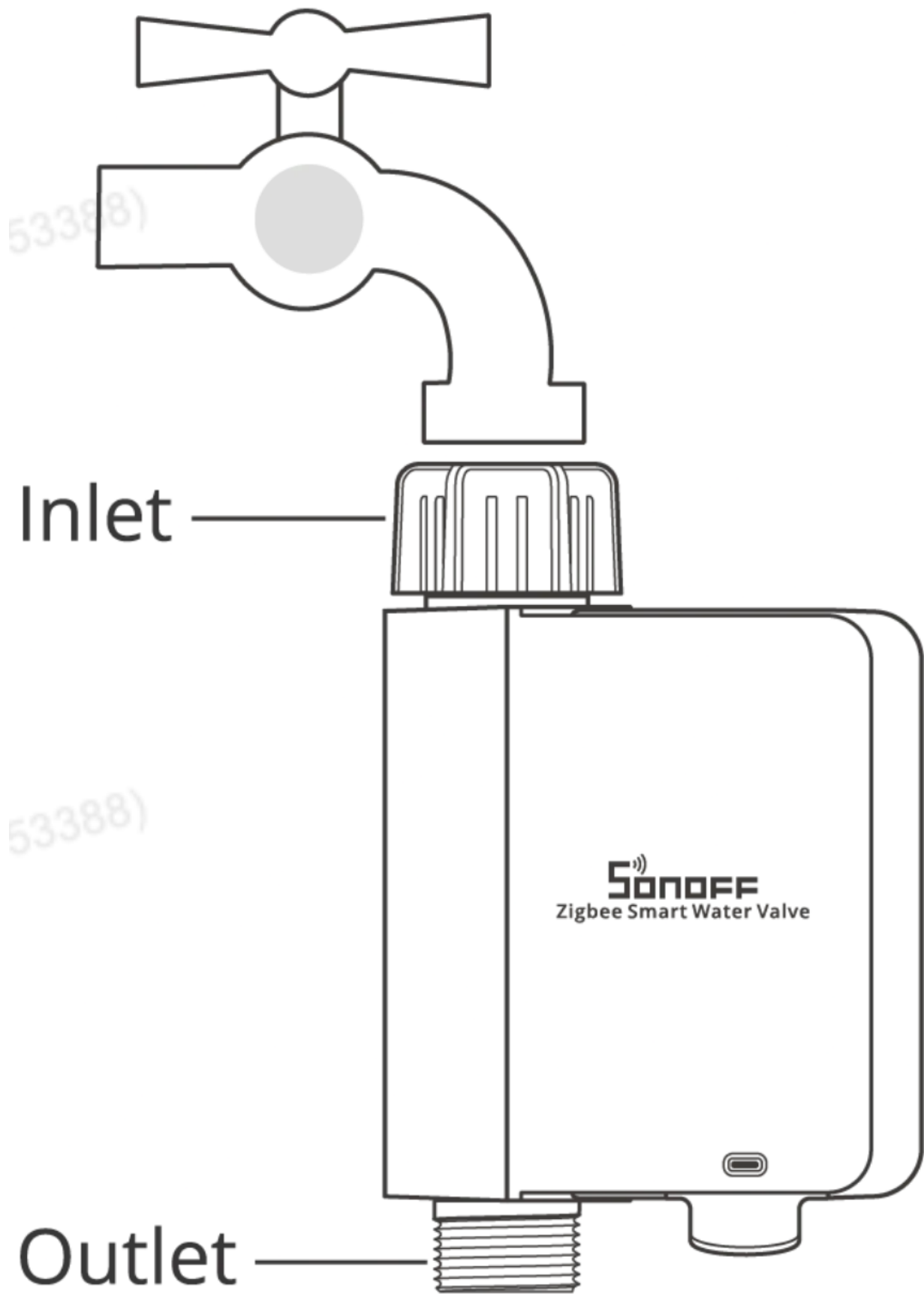
Amazon Gateway Models: Echo Plus 2nd Gen, Echo Show 2nd Gen, Echo 4th Gen

*Other gateways supporting the ZigBee 3.0 wireless protocol. Detailed information will be provided in accordance with the final product specifications.

Installation

First, wrap the thread seal tape around the threads of the faucet. Then, screw the nut of the water inlet of the equipment onto the faucet. After ensuring that there are no leaks, connect the hose to the water outlet of the [Manual](#)

equipment. If the water outlet leaks, please wrap the thread seal tape around the threads of the water outlet.



*It is recommended to install vertically as horizontal installation may increase the error in flow rate measurement.

Communication Distance

The maximum communication distance of this device is 130M (open space).