

Suzhou Armocon ZT5- ENIGMA Handheld massager User Manual ZT5-ENIGMA

Manualsum, simplified manuals

Table of Contents

- [LELO ENIGMA™ Double Sonic User Manual](#)
 - [IMPORTANT](#)
 - [SAFETY](#)
 - [COMPLIANCE STATEMENT](#)
 - [WARNING](#)
 - [GETTING TO KNOW YOUR ENIGMA™ Double Sonic](#)
 - [Double Stimulation Massager](#)
 - [HOW TO FIND FCC ID AND IC INFORMATION IN THE USER APP](#)
 - [HOW TO USE YOUR PRODUCT WITHOUT THE LELO™ APP](#)
 - [HOW TO USE YOUR PRODUCT WITH THE LELO™ APP](#)
 - [CHARGING YOUR ENIGMA™ Double Sonic](#)
 - [CLEANING, STORAGE, AND SAFETY](#)
 - [TROUBLESHOOTING](#)
 - [SPECIFICATIONS](#)
 - [REGISTER WARRANTY](#)

LELO ENIGMA™ Double Sonic User Manual

(ZT5-ENIGMA)



Congratulations on acquiring ENIGMA™ Double Sonic. Before getting more closely acquainted with it, please take a moment to look through this user manual.

IMPORTANT

Your pleasure object has been locked for transportation. To unlock, simply connect the charger or see below.

SAFETY

- Please consult your healthcare provider with any questions or concerns you may have regarding your condition.
- This product can be used by adults only. Keep out of reach of children.

[Manualsum](#)

- People with reduced physical, sensory or mental capabilities or lack of experience and knowledge should use the device only if they have been given supervision or instruction concerning the use of the device in a safe way and understand the hazards involved.
- Only use the product for the intended purpose. Sharing sex toys with other people may transmit sexual diseases. Do not share your sex toys with people other than your partner.
- Use protective measures with your partner if necessary.
- Do not use the product if you detect any cracks or signs of degradation on the covering material.
- To prevent stains, do not keep your product on the absorbent surfaces. If your product operates abnormally, turn off and consult the support section on our website.
- Do not use the product if one or more components are damaged.

COMPLIANCE STATEMENT

WARNING

Please take note that changes or modifications not expressly approved in writing by the party responsible for compliance could void the user's authority to operate the equipment and/or void any relevant warranties.

NOTE

This equipment has been tested and found to comply with the limits for a Class B digital device, pursuant to Part 15 of the FCC Rules. These limits are designed to provide reasonable protection against harmful interference in a residential installation. This equipment generates, uses and can radiate radio frequency energy and, if not installed and used in accordance with the instructions, may cause harmful interference to radio communications. However, there is no guarantee that interference will not occur in a particular installation. If this equipment does cause harmful interference to radio or television reception, which can be determined by turning the equipment off and on, the user is encouraged to try to correct the interference by one or more of the following measures:

Reorienting or relocating the receiving antenna.

Increasing the separation between the equipment and receiver.

Connecting the equipment to an outlet on a circuit different from that to which the receiver is connected.

Consulting the seller, the device dealer or an experienced radio/TV technician for help.

The device must not be co-located or operate in conjunction with any other antenna or transmitter.

The device has been evaluated to comply with general RF exposure requirements.

[Manualsum](#)

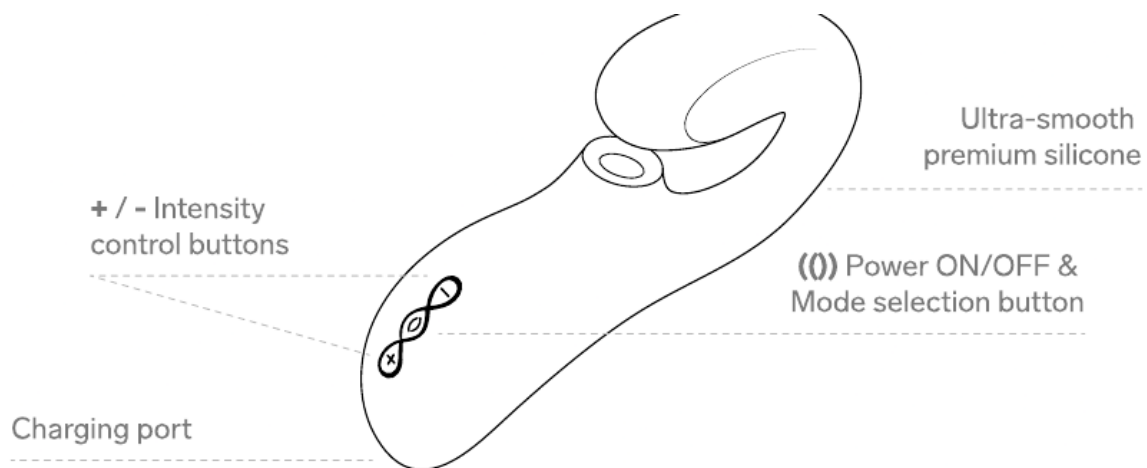
The device can be used in portable exposure conditions without restriction.

This device complies with IC RSS-102 radiation exposure limits set forth for an uncontrolled environment.

Users can obtain Canadian information on RF exposure and compliance.

GETTING TO KNOW YOUR ENIGMA™ Double Sonic

Double Stimulation Massager



HOW TO FIND FCC ID AND IC INFORMATION IN THE USER APP

- Open the “LELO APP”
- Click “Menu”
- Click “Legal & Regulatory”
- Click “ENIGMA™ Double Sonic”
- FCC ID: “ZT5-ENIGMA”
- IC: “9798A-ENIGMA”
- HVIN: “ENIGMA™ Double Sonic”
- PMN: “Handheld massager”

USING YOUR ENIGMA™ Double Sonic

HOW TO USE YOUR PRODUCT WITHOUT THE LELO™ APP

- Before the first use, charge your ENIGMA™ Double Sonic for 2 hours.
- Press the + or the (()) button to turn it on.
- Press the (()) button to switch between 8 modes.
- Use the + and the - buttons to increase or decrease the intensity.
- Press and hold the (()) button or the + and the - button simultaneously to turn it off.

HOW TO USE YOUR PRODUCT WITH THE LELO™ APP

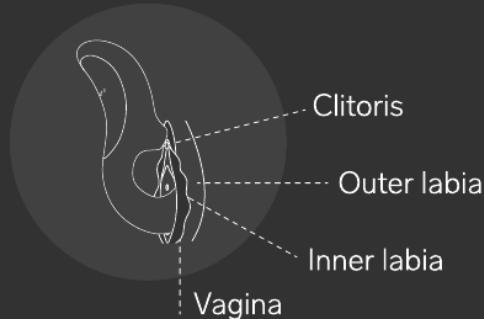
- Before the first use, charge your ENIGMA™ Double Sonic for 2 hours. DOWNLOAD THE IOS / ANDROID version.
- Press the (()) button for 3 seconds to turn it on while activating the Bluetooth.
- All the LED lights will blink simultaneously, showing the Bluetooth pairing.
- Open the LELO™ APP and locate the toy icon on the bottom of the screen. Find your ENIGMA™ Double Sonic and select “Connect”. Press and hold the button on your device. Confirm the connection by pressing the button on your product again.
- Go to “MY LELO TOYS” and select “PLAY”.
- Choose between 3 different regular modes- Manual, Screw, Shake, or 2 additional. advanced modes - Finish Me Off and Out Of Control.
- Go to “SETTINGS” to set your device according to your preferences.
- Click “SAVE” button at the bottom of your screen to save settings for offline use.
- Use the drop-down menu to set the default auto power off from 10-20 minutes. You can check the battery level in the upper left corner.
- For more information about the LELO™ APP, use the detailed instruction manual located [HERE](#).

USING ENIGMA™ Double Sonic

How to hold



Where to place



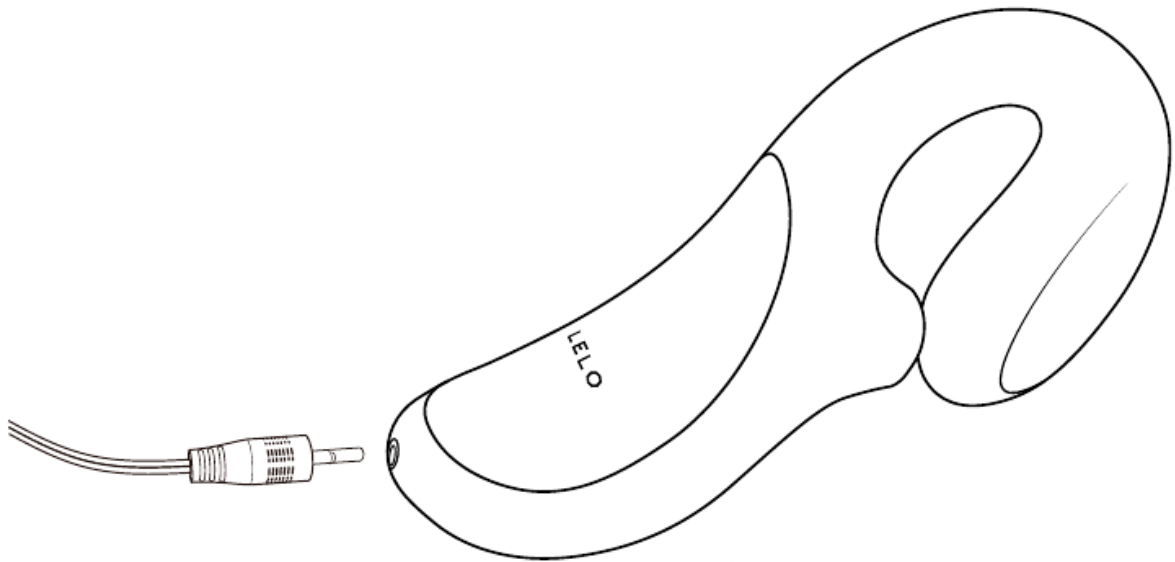
Keep in mind that ENIGMA™ Double Sonic will initiate automatic shutdown every 20 minutes to assure the motor doesn't overheat if the product is misused.

Tip: For an even more pleasurable sensation, apply a liberal amount of LELO Personal Moisturizer to your body and to ENIGMA Wave™ before and during use.

6

CHARGING YOUR ENIGMA™ Double Sonic

- Insert the DC plug into the DC port at the base of your ENIGMA™ Double Sonic.
- Insert the mains plug into a USB Port. The LED on the interface of your ENIGMA™ Double Sonic will pulse to indicate it is charging. When it is fully charged, the LED will emit a steady glow. When the battery is running low, the LED on your ENIGMA™ Double Sonic will emit a blinking white light.



Only use original chargers provided by LELO with your ENIGMA™ Double Sonic.

CLEANING, STORAGE, AND SAFETY

Using ENIGMA™ Double Sonic with hand creams or silicone-based lubricants may make the silicone permanently tacky.

ENIGMA™ Double Sonic is fully waterproof, making cleaning simple.

Rinse and spray with LELO Toy Cleaner, then rinse again and allow it to dry.

Always clean your ENIGMA™ Double Sonic thoroughly before and after each use.

You can wash the silicone with warm water and antibacterial soap, rinse with clean hot water, and pat dry with a lint-free cloth or towel. Never use cleansers containing alcohol, petrol, or acetone.

Avoid leaving your ENIGMA™ Double Sonic in direct sunlight, and NEVER expose it to extreme heat.

Store your ENIGMA™ Double Sonic in a dust-free place and keep it away from products of other materials.

TROUBLESHOOTING

The LED on your ENIGMA™ Double Sonic does not pulse when the charger is connected:

- The battery is drained and will require several minutes to acknowledge that it is being charged.
- The charger is not properly connected. Check wall and DC sockets.

Your ENIGMA™ Double Sonic does not activate when the (()) button is pressed:

- The battery is empty. Recharge your ENIGMA™ Double Sonic.
- The interface of your ENIGMA™ Double Sonic is locked. Hold down “+” & “~* button at the same time for 3 seconds.

If you experience any other problems with your ENIGMA™ Double Sonic or if you have any questions regarding the operation, please **contact:** customercare@lelo.com

SPECIFICATIONS

Materials: Body-safe silicone, ABS Plastic

Finish: Smooth

Size: 107 x50 x 170 / 4.2 x197 x 6.7 in

Insertable length: 140 mm / 5.5 in

Weight: 195g/ 6.9 oz

Battery: Li-Ion 520 mAh 3.7 V

Charging: Upto 2hat5.0V 500 mA

Rated Power:

- **Input:** 5V 2.6W
- **Output:** 3.7V 1.8W

User time: Upto 2h

Standby: 90 days

Frequency: 64 Hz / 130 Hz

Max. noise level: < 60 dB

Interface: 3 buttons

REGISTER WARRANTY

To activate your 1-year Limited Warranty, register the number provided on the LELO Authenticity Card at LELO.COM/SUPPORT.

1-YEAR WARRANTY

LELO warrants this pleasure object for a period of ONE (1) YEAR, after the date of original purchase, against defects due to faulty workmanship or materials. The warranty covers working parts that affect the function of the pleasure object. It does NOT cover cosmetic deterioration caused by [Malfunction](#)

wear and tear or damage caused by accident, misuse, or neglect. Any attempt to open or take apart the pleasure object (or its accessories) will void the warranty.

If you discover a defect and notify LELO during the warranty period, LELO will, at its discretion, replace the pleasure object free of charge. Claims under warranty must be supported by reasonable evidence of the date of claim is within the warranty period. To validate your warranty, please keep your original purchase receipt together with these warranty conditions for the duration of the warranty period. To claim your warranty, you must log in to your account at LELO.COM and then select the option to make a warranty claim.

Shipping costs are non-refundable. This undertaking is in addition to the consumer's statutory rights and does not affect those rights in any way.