

XIEXUN ELECTRONIC **Wireless HDMI Transmitter** **& Receiver User Manual**

Manualsum, simplified manuals

Table of Contents

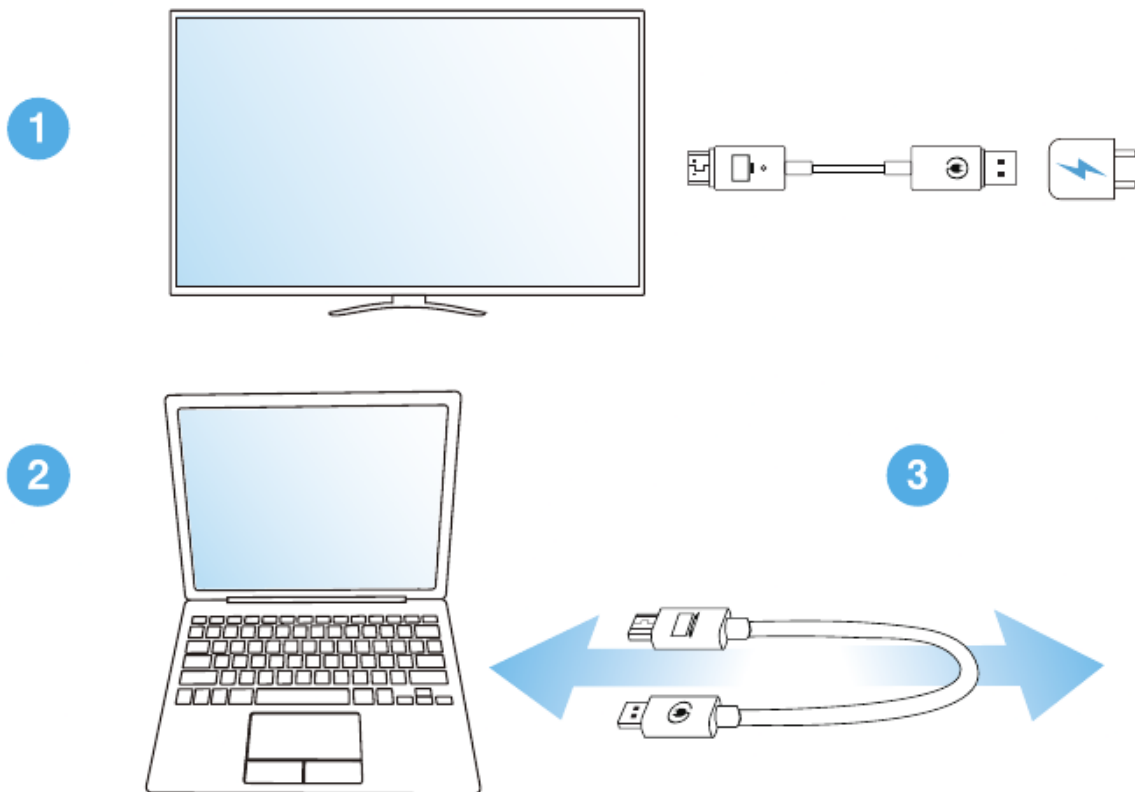
- [XIEXUN ELECTRONIC Wireless HDMI Transmitter & Receiver User Manual](#)
 - [Quick Start Guide](#)

XIEXUN ELECTRONIC Wireless HDMI Transmitter & Receiver User Manual

XIEXUN ELECTRONIC Wireless HDMI Transmitter & Receiver User Manual

FCC id: [2BGSB-5989811](#)

Quick Start Guide



1. Install receiver:

Connect the wireless display receiver to your screen and power it on.

2. Plug and mirror:

Plug the transmitter to laptop, connect it to the power supply and wait for mirroring automatically.

3. Stop and restart:

Remove the transmitter to stop mirroring, and plug the transmitter to restart mirroring.

*** If unable to mirror, please pair your transmitter to the receiver again.**